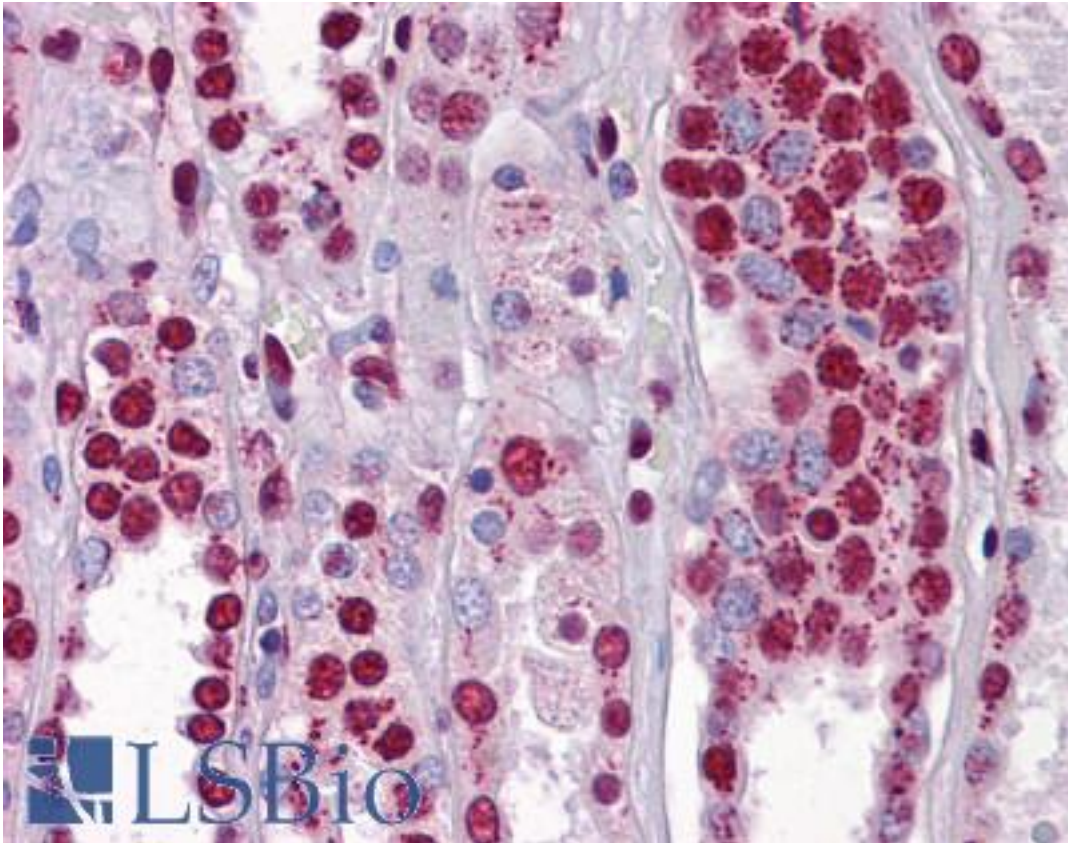


Polyglutamine Mouse anti-Human Monoclonal (N-Terminus) (5TF1-1C2) Antibody - LS-B6237 - LSBio

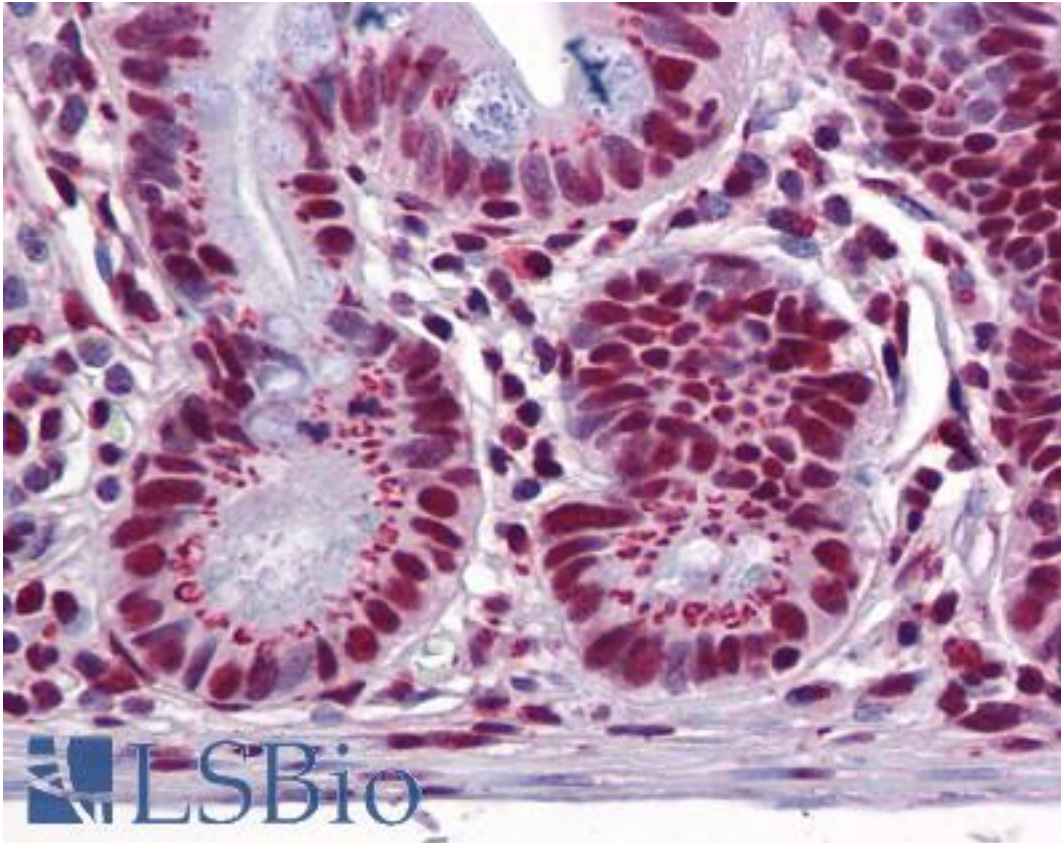
<b>CatalogID:</b>	LS-B6237
<b>Validation:</b>	This antibody replaces catalog number LS-C38294. It has been validated for use in the following assays: IHC-P.
<b>Target:</b>	Polyglutamine Expansion Disease Marker
<b>Host</b>	Polyglutamine Expansion Disease Marker antibody was produced in Mouse
<b>Clonality:</b>	Monoclonal
<b>Isotype:</b>	IgG1,k
<b>Clone Name:</b>	5TF1-1C2
<b>Immunogen Species:</b>	Polyglutamine antibody was raised against Human
<b>Antigen Type:</b>	Protein
<b>Immunogen:</b>	Polyglutamine antibody was raised against n-terminal part of the human TATA Box Binding Protein (TBP).
<b>Specificity:</b>	The epitope was found to be a homopolymeric glutamine stretch. The original immunogen was the general transcription factor TATA Box-binding protein (TBP) which contains a 38-glns stretch.
<b>Epitope:</b>	N-Terminus
<b>Reactivity:</b>	Human
<b>Purification:</b>	Ascites
<b>Presentation:</b>	Supplied as a liquid. No preservatives added.
<b>Recommended Storage:</b>	Short term 4°C, long term aliquot and store at -20°C, avoid freeze thaw cycles.
<b>Usage Summary:</b>	Suitable for use in ELISA, Western Blot, Immunohistochemistry, Immunocytochemistry and Immunoprecipitation. ELISA: 1:1000-1:20000. Western Blot: 1:1000-1:20000. Immunohistochemistry: 1:1000-1:20000 (Frozen sections) 1:50 (FFPE sections). Immunocytochemistry: 1:1000-1:20000 (transfected cells). Immunoprecipitation: 1:1000-1:20000.
<b>Uses:</b>	IHC - Paraffin (1:50), IHC - Frozen, ICC (1:1000 - 1:20000), Western blot (1:1000 - 1:20000), Immunoprecipitation (1:1000 - 1:20000), ELISA (1:1000 - 1:20000) (Optimal dilution to be determined by the researcher)
<b>Size:</b>	50 µl

**Immunohistochemistry Image:**



Anti-Polyglutamine antibody IHC of human kidney. Immunohistochemistry of formalin-fixed, paraffin-embedded tissue after heat-induced antigen retrieval. Antibody LS-B6237 dilution 1:50.

**Immunohistochemistry Image:**



Anti-Polyglutamine antibody IHC of human small intestine. Immunohistochemistry of formalin-fixed, paraffin-embedded tissue after heat-induced antigen retrieval. Antibody LS-B6237 dilution 1:50.

**Requested From:**

Japan

Laboratory Reagent For In Vitro Research Use Only

Not for resale without prior written consent from LifeSpan BioSciences, Inc.

Created on 9/24/2014

© 2014 LifeSpan BioSciences