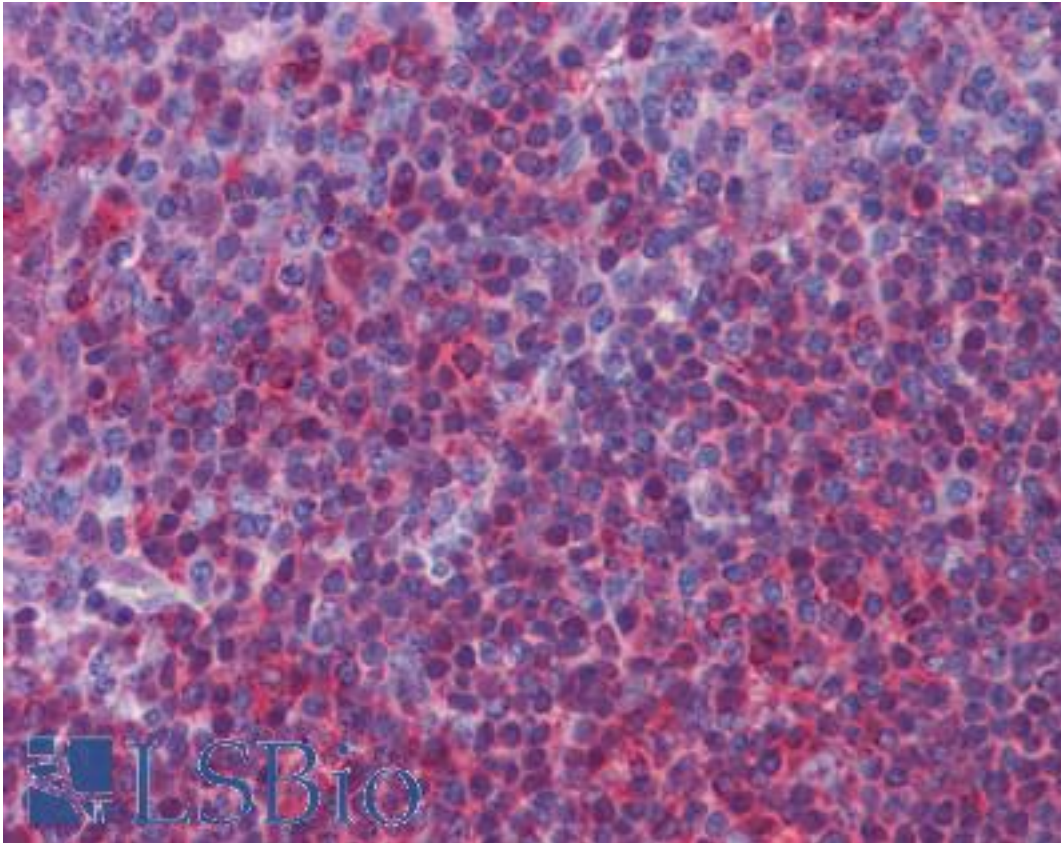


**ERK1 + ERK2 Mouse anti-Mouse Monoclonal Antibody - LS-B6235 - LSBio**

<b>CatalogID:</b>	LS-B6235
<b>Validation:</b>	This antibody replaces catalog number LS-C16370. It has been validated for use in the following assays: IHC-P.
<b>Target:</b>	Mitogen-activated Protein Kinase MAPK1/MAPK3/ERK1/ERK2
<b>Host</b>	Mitogen-activated Protein Kinase MAPK1/MAPK3/ERK1/ERK2 antibody was produced in Mouse
<b>Clonality:</b>	Monoclonal
<b>Isotype:</b>	IgG2a
<b>Immunogen Species:</b>	ERK1 + ERK2 antibody was raised against Mouse
<b>Antigen Type:</b>	Recombinant protein
<b>Immunogen:</b>	ERK1 + ERK2 antibody was raised against hPLC purified murine recombinant MAP Kinase.
<b>Specificity:</b>	Recognizes the 42kD mouse MAP Kinase encoded by the mapk gene. Species cross-reactivity: Human and rat.
<b>Reactivity:</b>	Mouse, Human, Rat
<b>Purification:</b>	Protein G purified
<b>Presentation:</b>	PBS, 0.05% sodium azide. Sourced in Ascites.
<b>Recommended Storage:</b>	Short term 4°C, long term aliquot and store at -20°C, avoid freeze thaw cycles.
<b>Usage Summary:</b>	Suitable for use in ELISA, Immunoprecipitation (mouse 3T3 cells), Immunohistochemistry-Paraffin (human FFPE tissues) and Western Blot (human A431 cells, mouse 3T3 cells and rat L6 cells). Proteins were visualized using a goat anti-mouse secondary antibody conjugated to HRP and a chemiluminescence detection system.
<b>Uses:</b>	IHC - Paraffin (10 µg/ml), Western blot (0.5 µg/ml), Immunoprecipitation, ELISA (Optimal dilution to be determined by the researcher)
<b>Size:</b>	50 µg
<b>Concentration:</b>	1 mg/ml

**Immunohistochemistry Image:**



Anti-ERK1/2 antibody IHC of human tonsil. Immunohistochemistry of formalin-fixed, paraffin-embedded tissue after heat-induced antigen retrieval. Antibody LS-B6235 concentration 10 ug/ml.

**Requested From:**

Japan

Laboratory Reagent For In Vitro Research Use Only

Not for resale without prior written consent from LifeSpan BioSciences, Inc.

Created on 9/24/2014

© 2014 LifeSpan BioSciences