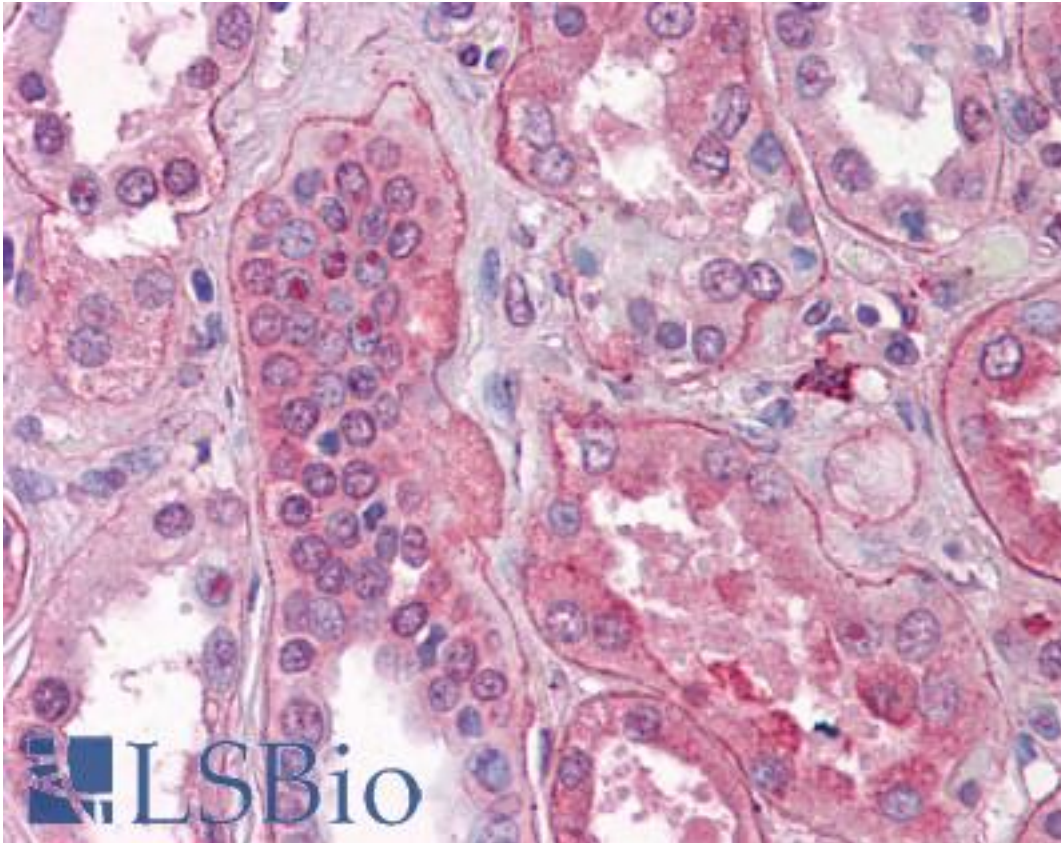


FGFR1 Mouse anti-Human Monoclonal (N-Terminus) (M 17A3) Antibody - LS-B6233 - LSBio	
<b>CatalogID:</b>	LS-B6233
<b>Validation:</b>	This antibody replaces catalog number LS-C83407. It has been validated for use in the following assays: IHC-P.
<b>Target:</b>	fibroblast growth factor receptor 1 (FGFR1)
<b>Synonyms:</b>	FGFR1 Antibody, BFGF receptor Antibody, BFGF-R Antibody, BFGF-R-1 Antibody, CD331 Antibody, Cek1 Antibody, CD331 antigen Antibody, FGFR1/PLAG1 fusion Antibody, FLT2 Antibody, Fgf-flg Antibody, FGFR Antibody, FGFR-1 Antibody, Fms-like tyrosine kinase 2 Antibody, HBGFR Antibody, HH2 Antibody, Hydroxyaryl-protein kinase Antibody, FGF receptor 1 Antibody, Fms-related tyrosine kinase 2 Antibody, Proto-oncogene c-Fgr Antibody, BFGFR Antibody, CEK Antibody, FLT-2 Antibody, HBGFR receptor Antibody, KAL2 Antibody, OGD Antibody
<b>Family / Subfamily:</b>	Protein Kinase / FGF Receptor
<b>Host</b>	FGFR1 antibody was produced in Mouse
<b>Clonality:</b>	Monoclonal
<b>Isotype:</b>	IgG2b
<b>Clone Name:</b>	M 17A3
<b>Immunogen Species:</b>	FGFR1 antibody was raised against Human
<b>Antigen Type:</b>	Recombinant protein
<b>Immunogen:</b>	FGFR1 antibody was raised against recombinant human ectodomain of FGFR1~ expressed in E. coli beginning with pro23; antigen contained NH2-terminal gly-ser-pro-gly-ile and COOH-terminal glu-phe sequences.
<b>Specificity:</b>	Reacts with the beta isoform of FGFR1. Epitope is undetermined but presumed to be near junction of the common FGFR1 NH2-terminus and NH2- terminus of Ig loop II.
<b>Epitope:</b>	N-Terminus
<b>Reactivity:</b>	Human
<b>Purification:</b>	Protein G purified
<b>Presentation:</b>	PBS, pH 7.4
<b>Recommended Storage:</b>	Long term: -70°C; Short term: -20°C; Avoid freeze-thaw cycles.
<b>Usage Summary:</b>	Western blotting: at 1 ug/ml recognizes 10 ng recombinant bacterial, baculoviral, or native FGFR1. Immunoprecipitation: native, nuclear, recombinant, and ligand-labeled FGFR1. IHC using FFPE human tissues.
<b>Uses:</b>	IHC - Paraffin (10 µg/ml), Western blot (1 µg/ml), Immunoprecipitation (Optimal dilution to be determined by the researcher)
<b>Size:</b>	50 µg
<b>Concentration:</b>	1 mg/ml

**Immunohistochemistry Image:**



Anti-FGFR1 antibody IHC of human kidney. Immunohistochemistry of formalin-fixed, paraffin-embedded tissue after heat-induced antigen retrieval. Antibody LS-B6233 concentration 10 ug/ml.

**Requested From:**

Japan

Laboratory Reagent For In Vitro Research Use Only

Not for resale without prior written consent from LifeSpan BioSciences, Inc.

Created on 9/24/2014

© 2014 LifeSpan BioSciences