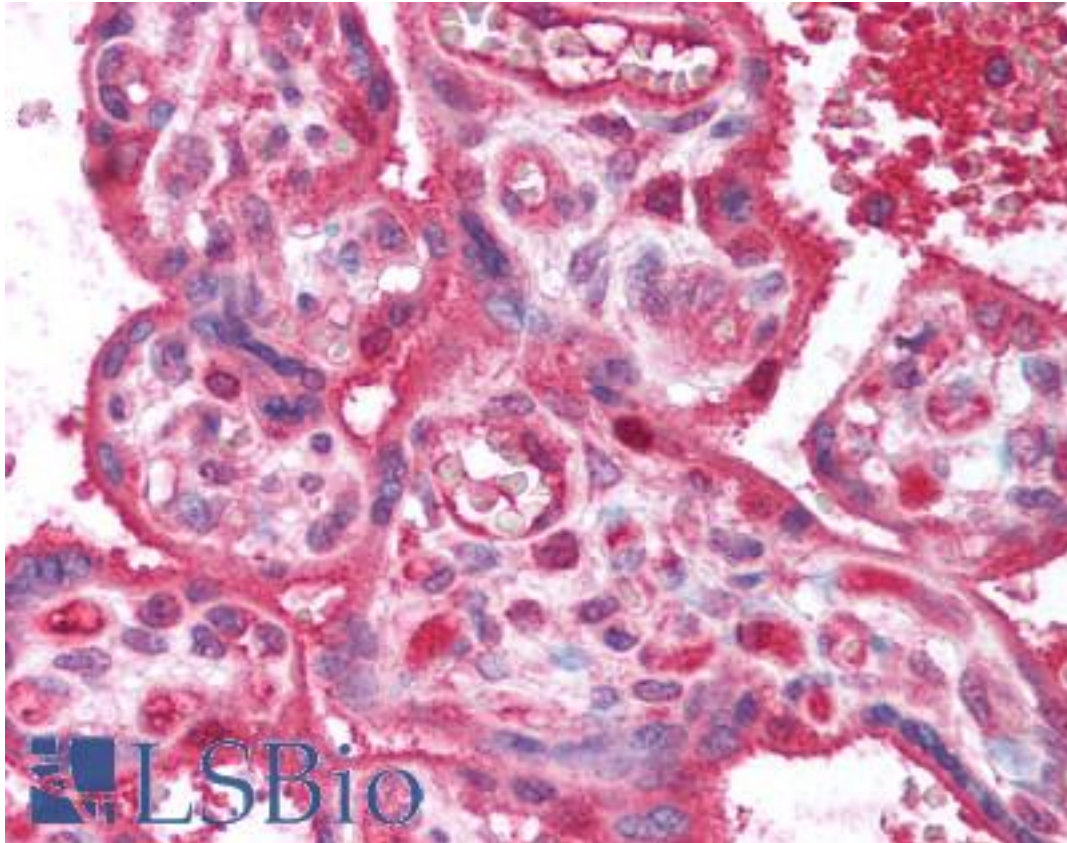


LPP3 / PPAP2B Rabbit Polyclonal Antibody - LS-B623 - LSBio

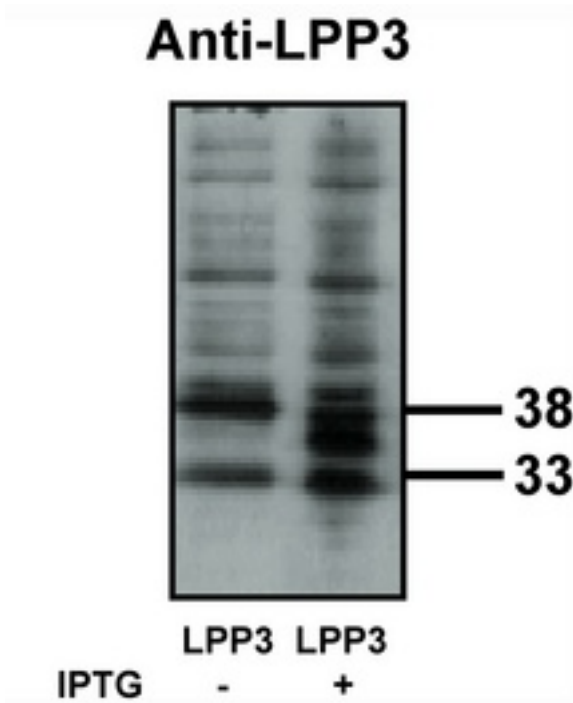
CatalogID:	LS-B623
Validation:	This antibody replaces catalog number LS-C26763. It has been validated for use in the following assays: IHC.
Target:	phosphatidic acid phosphatase type 2B (PPAP2B)
Synonyms:	PPAP2B Antibody, Dri42 Antibody, PAP2 beta Antibody, PAP2-beta Antibody, PAP2B Antibody, VCIP Antibody, PAP-2b Antibody, LPP3 Antibody
Host	PPAP2B antibody was produced in Rabbit
Clonality:	Polyclonal
Reactivity:	Human
Purification:	Ammonium sulfate precipitation
Presentation:	PBS, 0.08% sodium azide.
Recommended Storage:	Long term: -20°C; Short term: +4°C. Avoid repeat freeze-thaw cycles.
Usage Summary:	Immunohistochemistry: LS-B623 was validated for use in immunohistochemistry on a panel of 21 formalin-fixed, paraffin-embedded (FFPE) human tissues after heat induced antigen retrieval in pH 6.0 citrate buffer. After incubation with the primary antibody, slides were incubated with biotinylated secondary antibody, followed by alkaline phosphatase-streptavidin and chromogen. The stained slides were evaluated by a pathologist to confirm staining specificity. The optimal working concentration for LS-B623 was determined to be 20 ug/ml.
Uses:	IHC - Paraffin (20 µg/ml), Western blot (Optimal dilution to be determined by the researcher)
Size:	50 µg
Concentration:	1 mg/ml

Immunohistochemistry Image:



Anti-PPAP2B antibody IHC of human placenta. Immunohistochemistry of formalin-fixed, paraffin-embedded tissue after heat-induced antigen retrieval. Antibody LS-B623 concentration 20 ug/ml.

Western Blot Image:



Western blot of LPP3 antibody on bacterially expressed LPP3 protein when untreated (-) and treated with with 0.1 mM IPTG (iso propyl-beta-D- thiogalactopyranoside) (+) at a dilution of 10 ug/ml.

Requested From:

Japan

Laboratory Reagent For In Vitro Research Use Only

Not for resale without prior written consent from LifeSpan BioSciences, Inc.

Created on 9/24/2014

© 2014 LifeSpan BioSciences