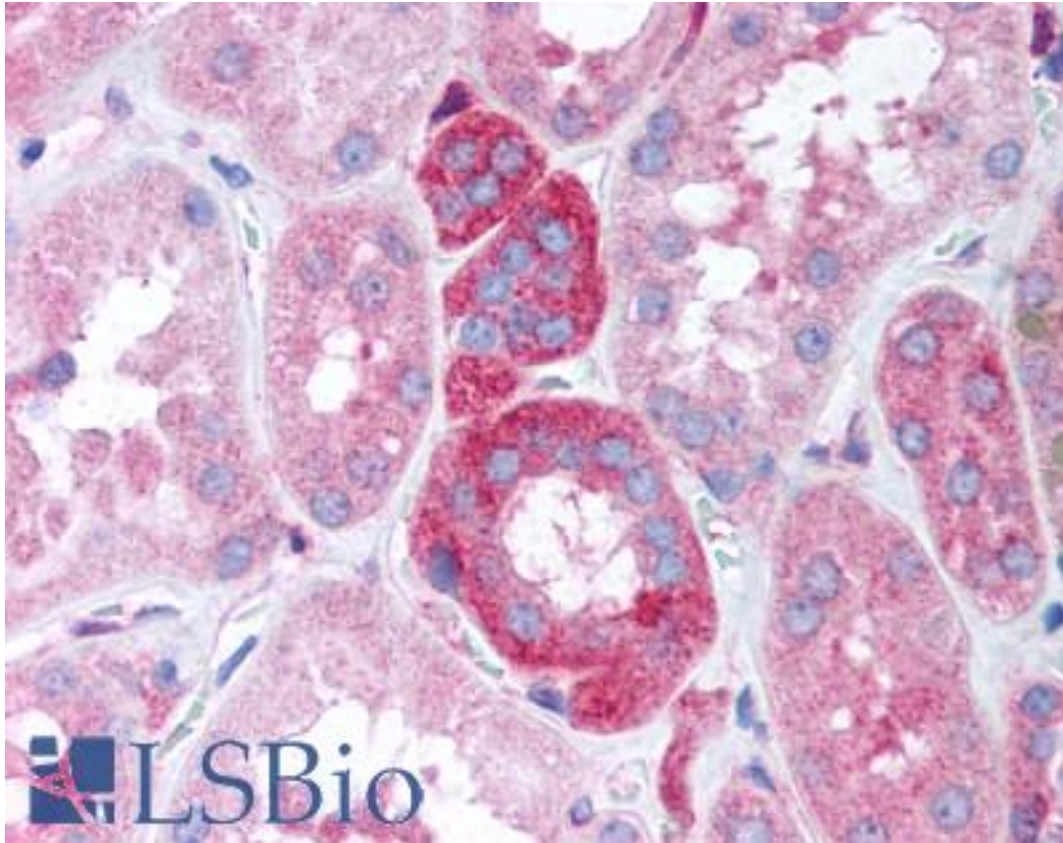


GB5 / GNB5 Rabbit Polyclonal Antibody - LS-B622 - LSBio

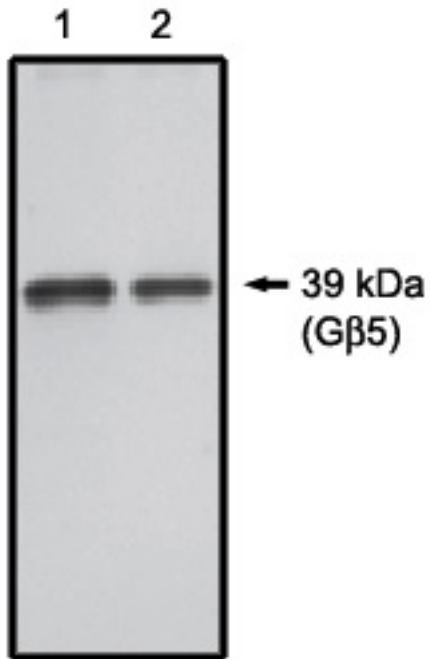
CatalogID:	LS-B622
Validation:	This antibody replaces catalog number LS-C26786. It has been validated for use in the following assays: IHC.
Target:	guanine nucleotide binding protein (G protein), beta 5 (GNB5)
Synonyms:	GNB5 Antibody, G protein, beta-5 subunit Antibody, Gbeta5 Antibody, G protein, beta subunit 5L Antibody, Transducin beta chain 5 Antibody, GB5 Antibody
Host	GNB5 antibody was produced in Rabbit
Clonality:	Polyclonal
Antigen Type:	Synthetic peptide
Immunogen:	GB5 / GNB5 antibody was raised against synthetic peptide from human GNB5 (TFDKNENMAAKKK)
Specificity:	Peptide from the D1 blade of GNB5 protein.
Reactivity:	Human, Mouse
Purification:	Ammonium sulfate precipitation
Presentation:	PBS, 0.08% sodium azide.
Recommended Storage:	+4°C or -20°C, Avoid repeated freezing and thawing.
Usage Summary:	Immunohistochemistry: LS-B622 was validated for use in immunohistochemistry on a panel of 21 formalin-fixed, paraffin-embedded (FFPE) human tissues after heat induced antigen retrieval in pH 6.0 citrate buffer. After incubation with the primary antibody, slides were incubated with biotinylated secondary antibody, followed by alkaline phosphatase-streptavidin and chromogen. The stained slides were evaluated by a pathologist to confirm staining specificity. The optimal working concentration for LS-B622 was determined to be 20 ug/ml.
Uses:	IHC - Paraffin (20 µg/ml), Western blot (Optimal dilution to be determined by the researcher)
Size:	50 µg
Concentration:	1 mg/ml

Immunohistochemistry Image:



Anti-GNB5 antibody IHC of human kidney. Immunohistochemistry of formalin-fixed, paraffin-embedded tissue after heat-induced antigen retrieval. Antibody LS-B622 concentration 20 ug/ml.

Western Blot Image:



Western blot of G 5 antibody on 20 ng (1) and 10 ng (2) purified G 5 protein.

Requested From:

Japan

Laboratory Reagent For In Vitro Research Use Only

Not for resale without prior written consent from LifeSpan BioSciences, Inc.

Created on 9/24/2014

© 2014 LifeSpan BioSciences