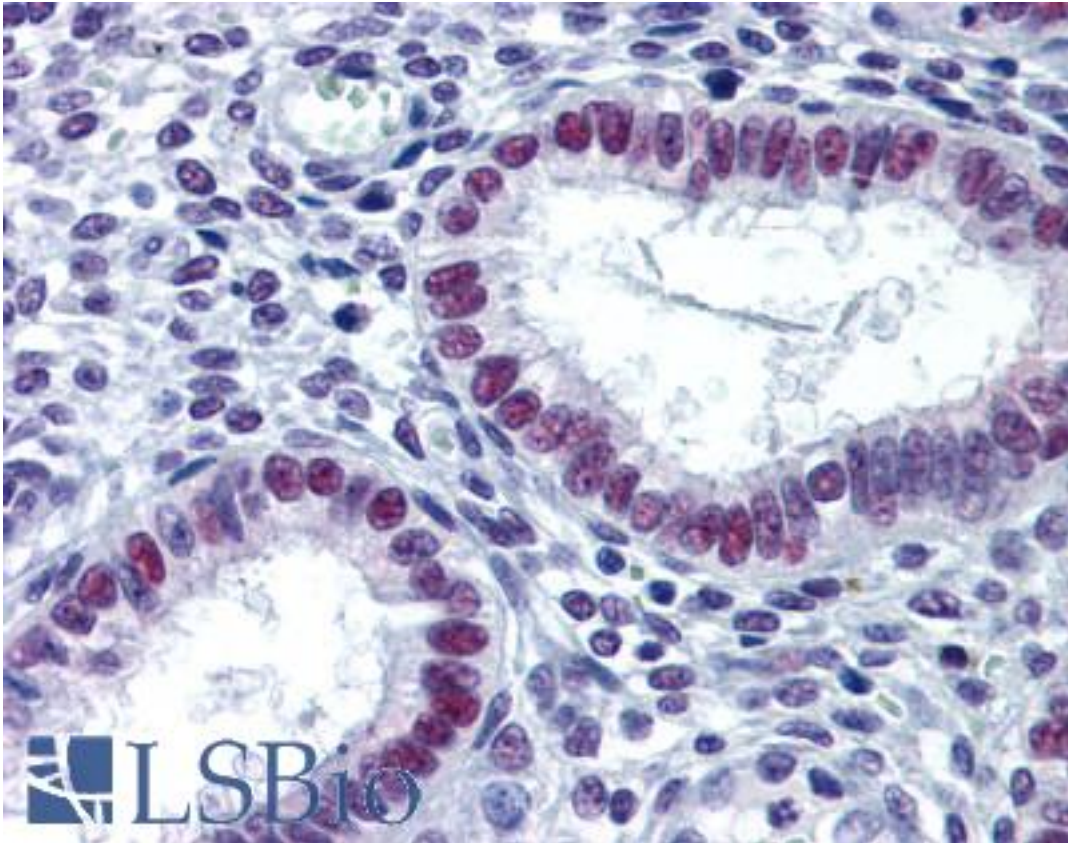


KDM1A / LSD1 Mouse anti-Human Monoclonal (2E7) Antibody - LS-B6214 - LSBio

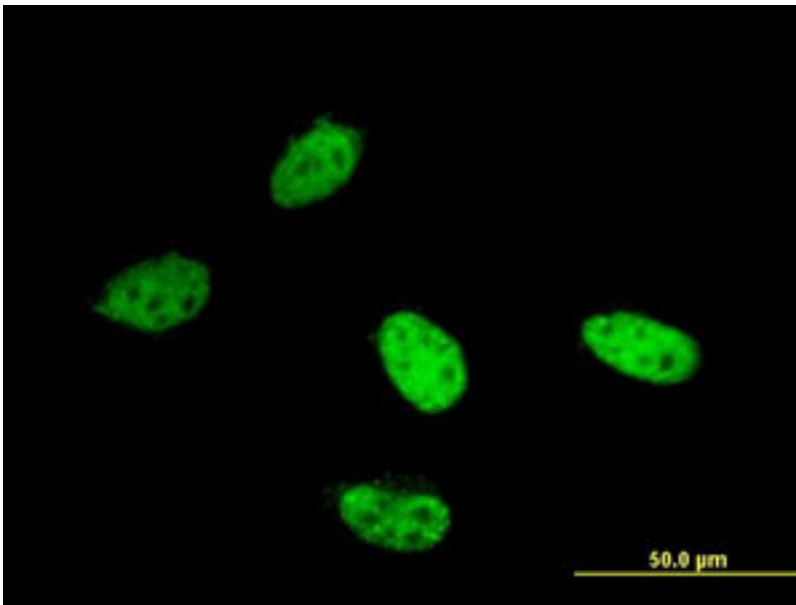
CatalogID:	LS-B6214
Validation:	This antibody replaces catalog number LS-C133698. It has been validated for use in the following assays: IHC-P.
Target:	lysine (K)-specific demethylase 1A (KDM1A)
Synonyms:	KDM1A Antibody, BHC110 Antibody, KDM1 Antibody, LSD1 Antibody, AOF2 Antibody, KIAA0601 Antibody
Host	KDM1A antibody was produced in Mouse
Clonality:	Monoclonal
Isotype:	IgG2a,k
Clone Name:	2E7
Immunogen Species:	KDM1A / LSD1 antibody was raised against Human
Immunogen:	KDM1A / LSD1 antibody was raised against aOF2 (NP_055828, 753 a.a. ~ 852 a.a) partial recombinant protein with GST tag. MW of the GST tag alone is 26 KDa.
Specificity:	Human AOF2
Reactivity:	Human
Purification:	Protein A purified
Presentation:	PBS, pH 7.2
Recommended Storage:	Store at -20°C or lower. Aliquot to avoid repeated freezing and thawing.
Usage Summary:	Immunohistochemistry: Formalin-fixed paraffin-embedded sections. Sandwich ELISA: Recombinant protein. Western Blot with the recombinant protein used as the immunogen.
Uses:	IHC - Paraffin (1 - 5 µg/ml), Immunofluorescence (10 µg/ml), Western blot (1:500 - 1:1000), ELISA (Optimal dilution to be determined by the researcher)
Size:	50 µg
Concentration:	0.25 mg/ml

Immunohistochemistry Image:



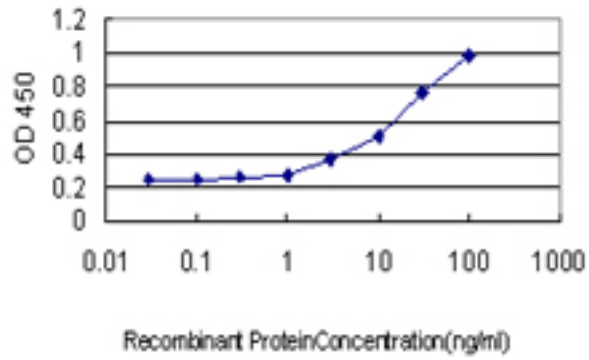
Anti-KDM1A / LSD1 antibody IHC of human uterus. Immunohistochemistry of formalin-fixed, paraffin-embedded tissue after heat-induced antigen retrieval. Antibody LS-B6214 concentration 1 ug/ml.

Immunofluorescence Image:



Immunofluorescence of monoclonal antibody to AOF2 on HeLa cell. [antibody concentration 10 ug/ml].

ELISA Image:



Detection limit for recombinant GST tagged AOF2 is approximately 0.3 ng/ml as a capture antibody.

Requested From:

Japan

Laboratory Reagent For In Vitro Research Use Only

Not for resale without prior written consent from LifeSpan BioSciences, Inc.

Created on 9/24/2014

© 2014 LifeSpan BioSciences