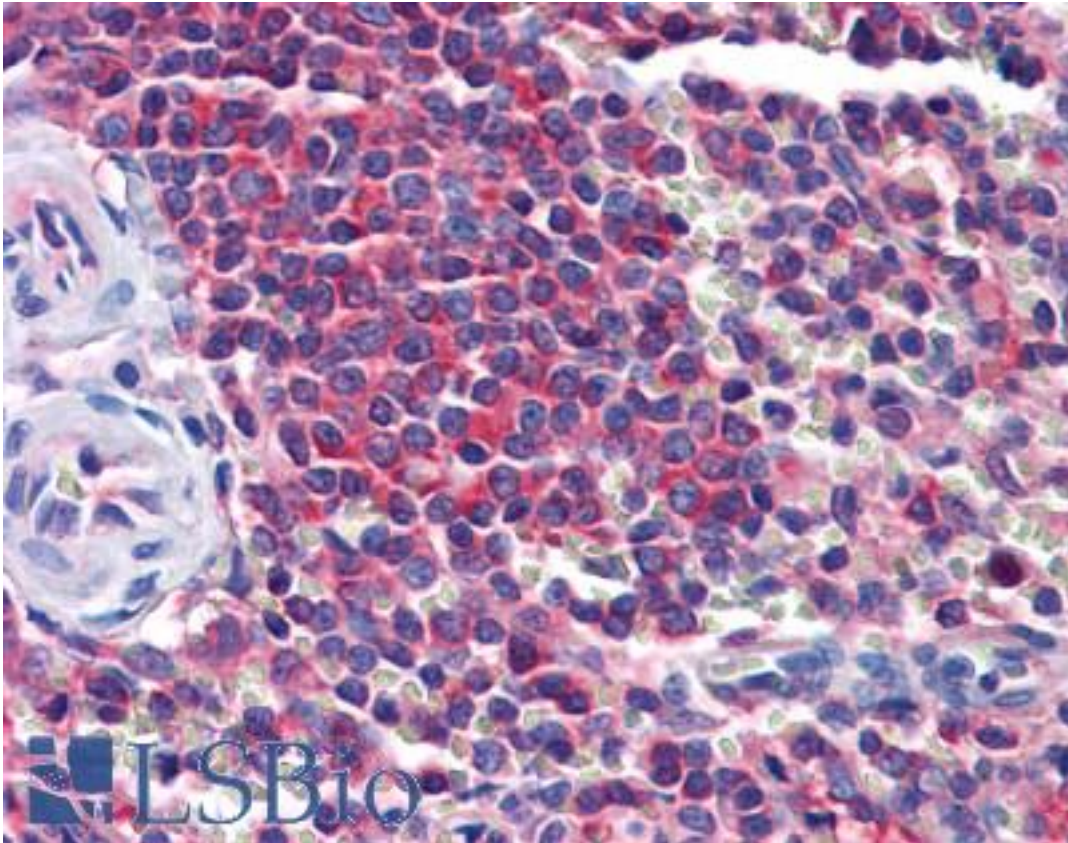


STI1 / STIP1 Mouse anti-Human Monoclonal (2E11) Antibody - LS-B6210 - LSBio

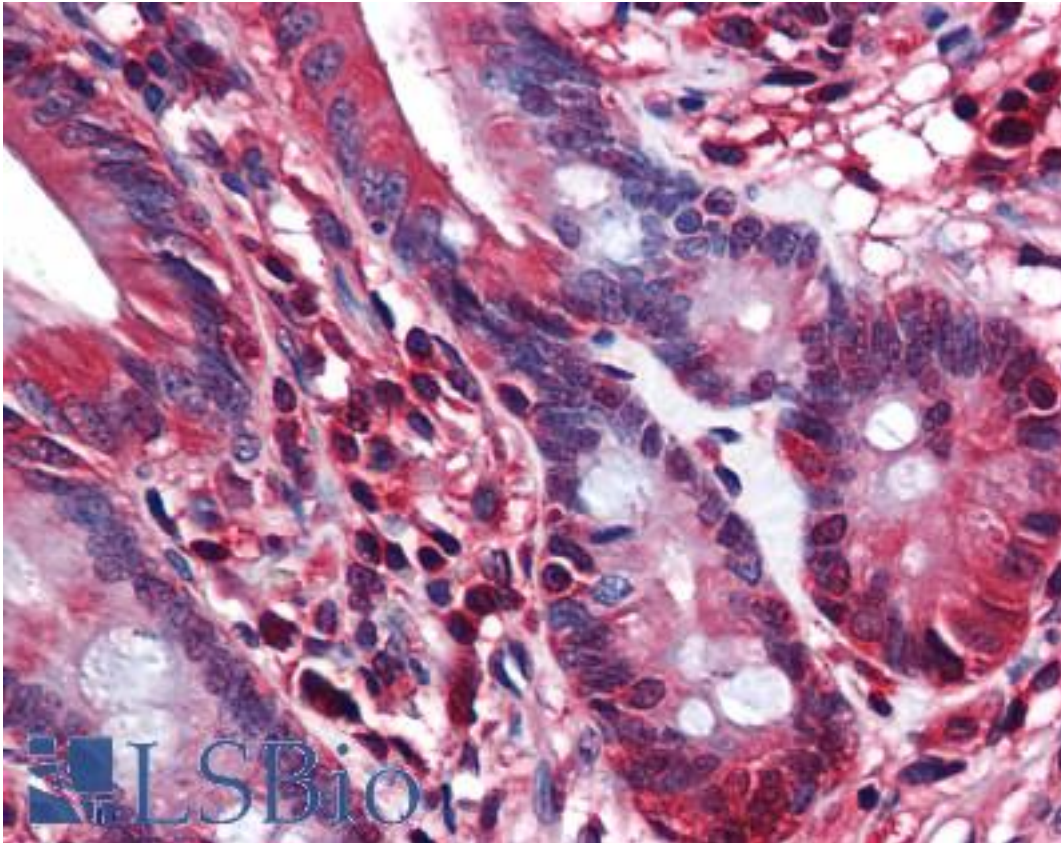
<b>CatalogID:</b>	LS-B6210
<b>Validation:</b>	This antibody replaces catalog number LS-C133669. It has been validated for use in the following assays: IHC-P.
<b>Target:</b>	stress-induced phosphoprotein 1 (STIP1)
<b>Synonyms:</b>	STIP1 Antibody, HOP Antibody, IEF-SSP-3521 Antibody, NY-REN-11 antigen Antibody, p60 Antibody, STI1 Antibody, Hsc70/Hsp90-organizing protein Antibody, Hsp70/Hsp90-organizing protein Antibody, STI1L Antibody
<b>Host</b>	STIP1 antibody was produced in Mouse
<b>Clonality:</b>	Monoclonal
<b>Isotype:</b>	IgG1,k
<b>Clone Name:</b>	2E11
<b>Immunogen Species:</b>	STI1 / STIP1 antibody was raised against Human
<b>Immunogen:</b>	STI1 / STIP1 antibody was raised against sTIP1 (AAH02987, 1 a.a. ~ 544 a.a) full-length recombinant protein with GST tag. MW of the GST tag alone is 26 KDa.
<b>Specificity:</b>	Human STIP1
<b>Reactivity:</b>	Human
<b>Purification:</b>	Protein A purified
<b>Presentation:</b>	PBS, pH 7.2
<b>Recommended Storage:</b>	Store at -20°C or lower. Aliquot to avoid repeated freezing and thawing.
<b>Usage Summary:</b>	Immunohistochemistry: Formalin-fixed paraffin-embedded sections. Sandwich ELISA: Recombinant protein. Western Blot with the recombinant protein used as the immunogen.
<b>Uses:</b>	IHC - Paraffin (0.75 - 5 µg/ml), Western blot (1:500 - 1:1000), Flow Cytometry, ELISA (Optimal dilution to be determined by the researcher)
<b>Size:</b>	50 µg
<b>Concentration:</b>	0.5 mg/ml

**Immunohistochemistry Image:**



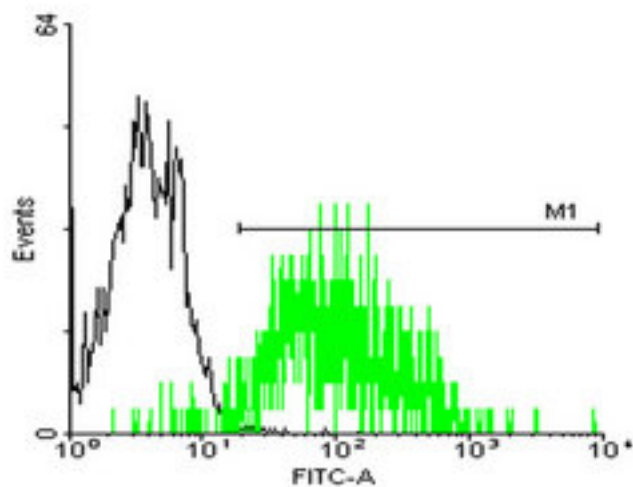
Anti-STIP1 antibody IHC of human spleen. Immunohistochemistry of formalin-fixed, paraffin-embedded tissue after heat-induced antigen retrieval. Antibody LS-B6210 concentration 0.75 ug/ml.

**Immunohistochemistry Image:**



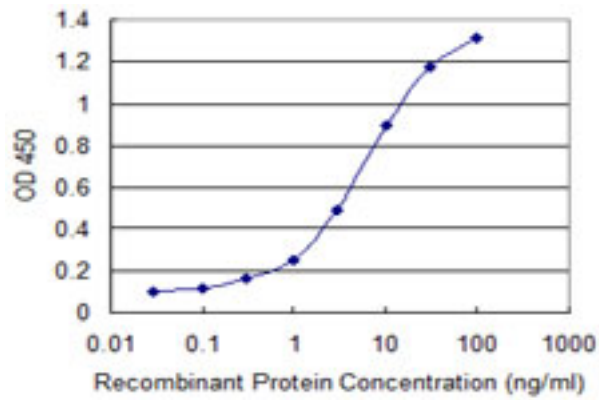
Anti-STIP1 antibody IHC of human small intestine. Immunohistochemistry of formalin-fixed, paraffin-embedded tissue after heat-induced antigen retrieval. Antibody LS-B6210 concentration 0.75 ug/ml.

**Flow Cytometry Image:**



FACS analysis of A-431 cells stained with STIP1 monoclonal antibody clone 2E11 (Green) and non-stained A-431 cells (Black) as negative control.

**ELISA Image:**



Detection limit for recombinant GST tagged STIP1 is 0.1 ng/ml as a capture antibody.

**Requested From:**

Japan

Laboratory Reagent For In Vitro Research Use Only

Not for resale without prior written consent from LifeSpan BioSciences, Inc.

Created on 9/24/2014

© 2014 LifeSpan BioSciences