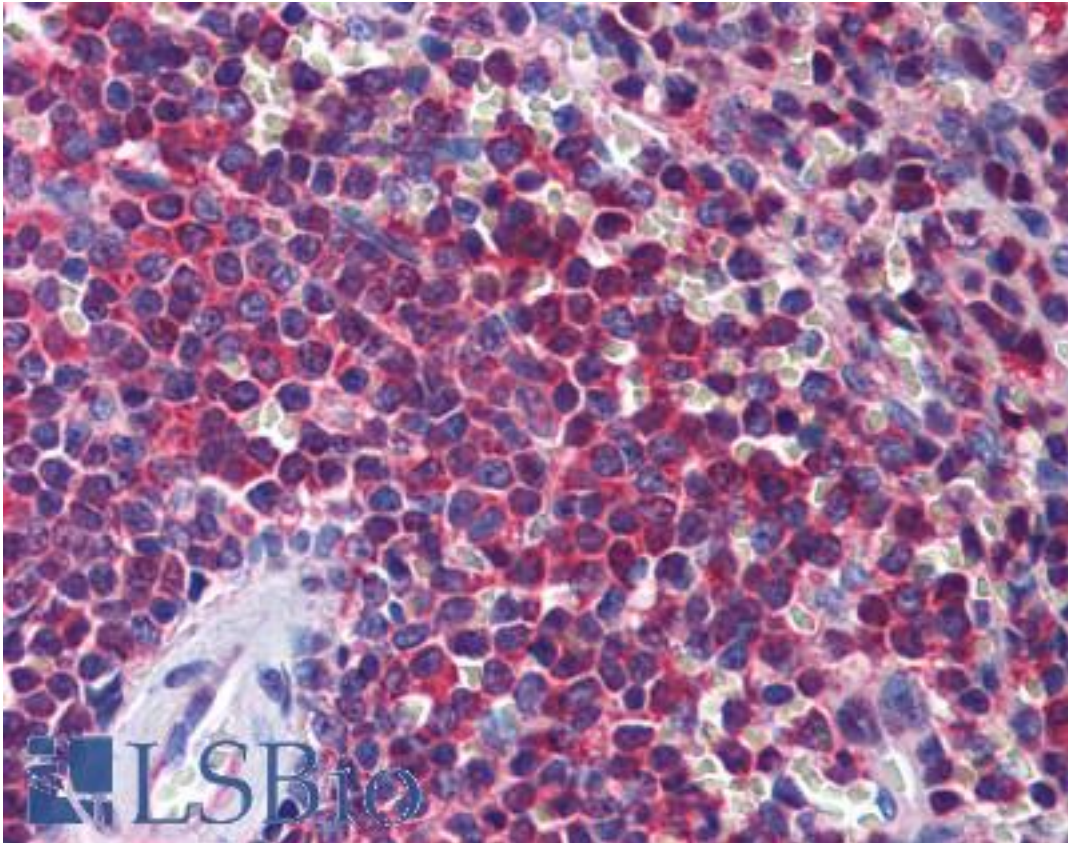


STI1 / STIP1 Mouse anti-Human Monoclonal (2E1) Antibody - LS-B6209 - LSBio

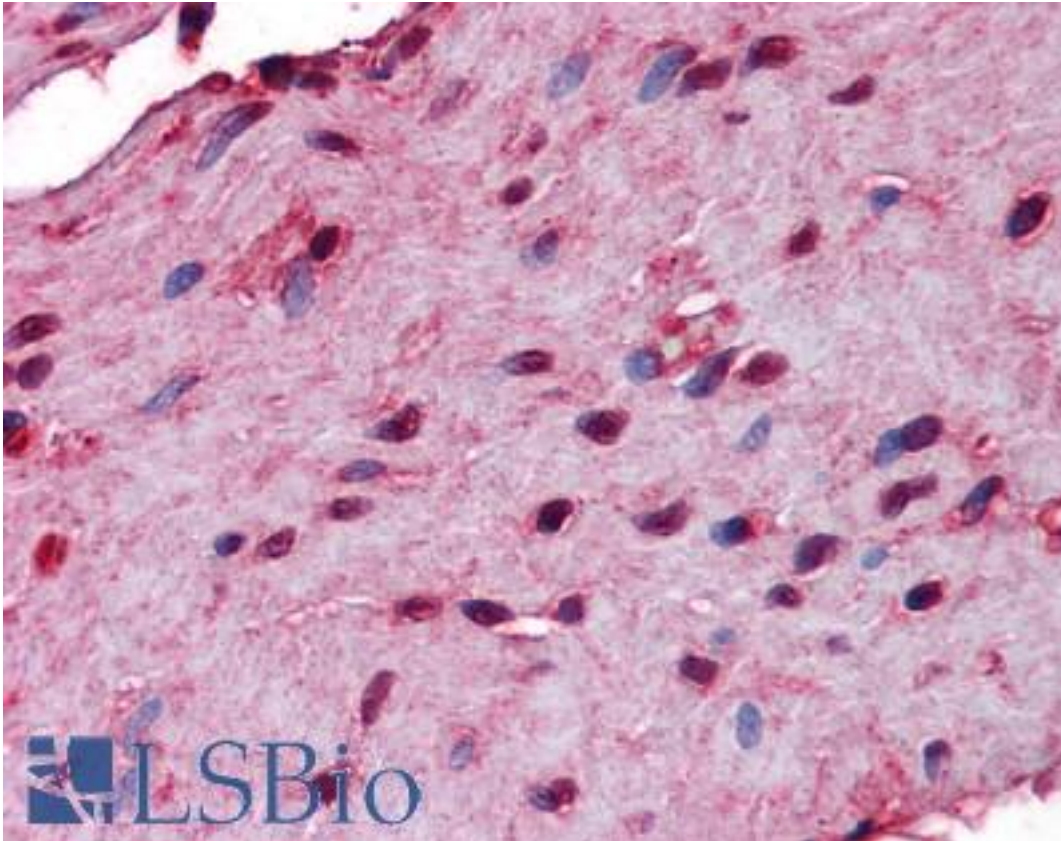
CatalogID:	LS-B6209
Validation:	This antibody replaces catalog number LS-C133668. It has been validated for use in the following assays: IHC-P.
Target:	stress-induced phosphoprotein 1 (STIP1)
Synonyms:	STIP1 Antibody, HOP Antibody, IEF-SSP-3521 Antibody, NY-REN-11 antigen Antibody, p60 Antibody, STI1 Antibody, Hsc70/Hsp90-organizing protein Antibody, Hsp70/Hsp90-organizing protein Antibody, STI1L Antibody
Host	STIP1 antibody was produced in Mouse
Clonality:	Monoclonal
Isotype:	IgG1,k
Clone Name:	2E1
Immunogen Species:	STI1 / STIP1 antibody was raised against Human
Immunogen:	STI1 / STIP1 antibody was raised against sTIP1 (AAH02987, 1 a.a. ~ 544 a.a) full-length recombinant protein with GST tag. MW of the GST tag alone is 26 KDa.
Specificity:	Human STIP1
Reactivity:	Human
Purification:	Protein A purified
Presentation:	PBS, pH 7.2
Recommended Storage:	Store at -20°C or lower. Aliquot to avoid repeated freezing and thawing.
Usage Summary:	Immunohistochemistry: Formalin-fixed paraffin-embedded sections. Sandwich ELISA: Recombinant protein. Western Blot with the recombinant protein used as the immunogen. Flow cytometry.
Uses:	IHC - Paraffin (0.75 - 5 µg/ml), Western blot (1:500 - 1:1000), Flow Cytometry, ELISA (Optimal dilution to be determined by the researcher)
Size:	50 µg
Concentration:	0.5 mg/ml

Immunohistochemistry Image:



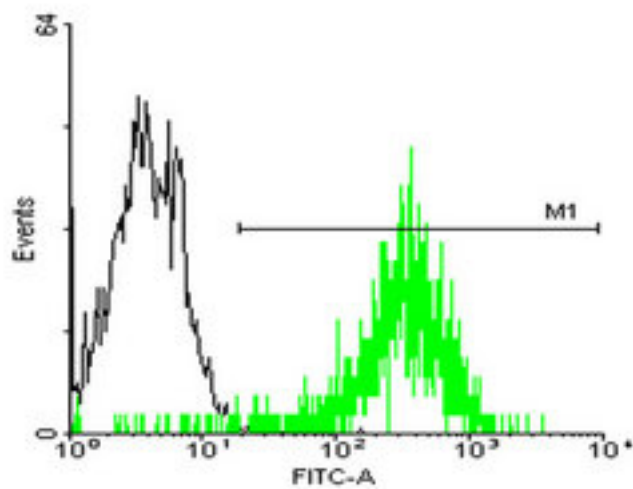
Anti-STIP1 antibody IHC of human spleen. Immunohistochemistry of formalin-fixed, paraffin-embedded tissue after heat-induced antigen retrieval. Antibody LS-B6209 concentration 0.75 ug/ml.

Immunohistochemistry Image:



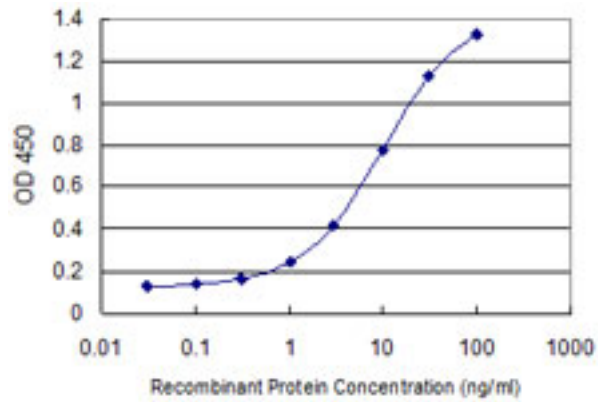
Anti-STIP1 antibody IHC of human small intestine, muscularis propria. Immunohistochemistry of formalin-fixed, paraffin-embedded tissue after heat-induced antigen retrieval. Antibody LS-B6209 concentration 0.75 ug/ml.

Flow Cytometry Image:



FACS analysis of A-431 cells stained with STIP1 monoclonal antibody clone 2E1 (Green) and non-stained A-431 cells (Black) as negative control.

ELISA Image:



Detection limit for recombinant GST tagged STIP1 is 0.1 ng/ml as a capture antibody.

Requested From:

Japan

Laboratory Reagent For In Vitro Research Use Only

Not for resale without prior written consent from LifeSpan BioSciences, Inc.

Created on 9/24/2014

© 2014 LifeSpan BioSciences