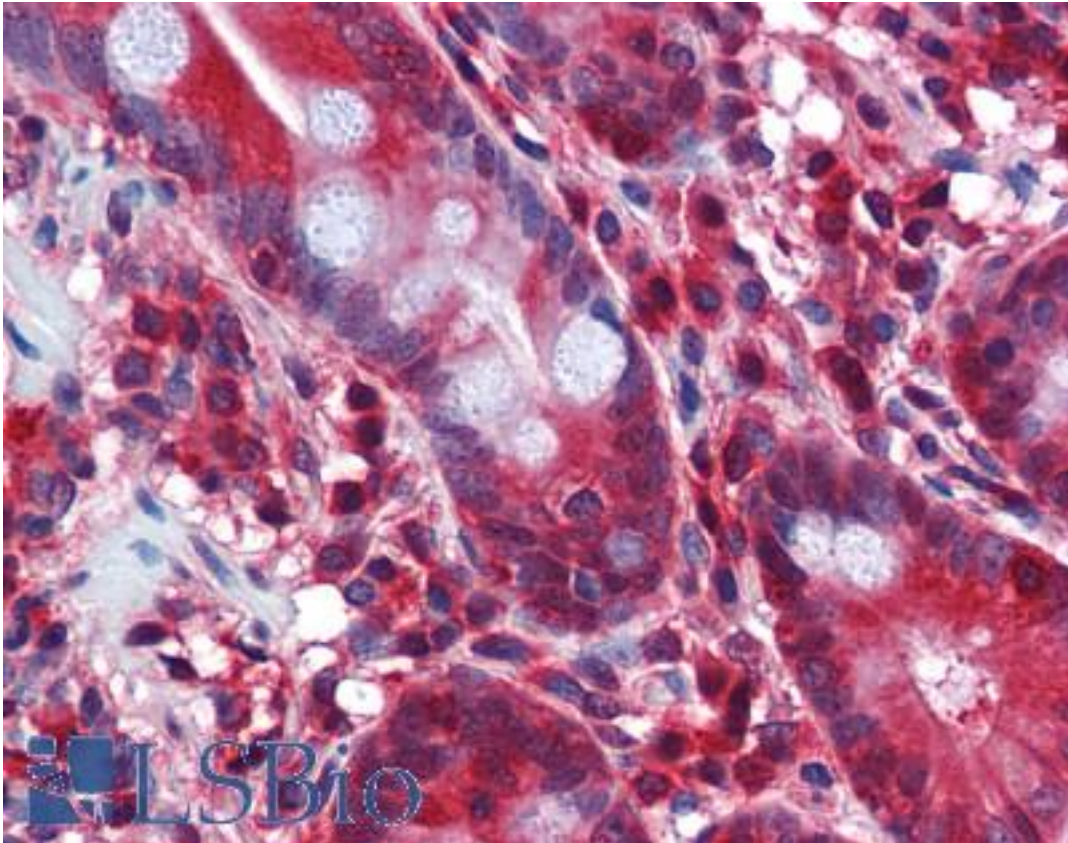


STI1 / STIP1 Mouse anti-Human Monoclonal (1E3) Antibody - LS-B6208 - LSBio

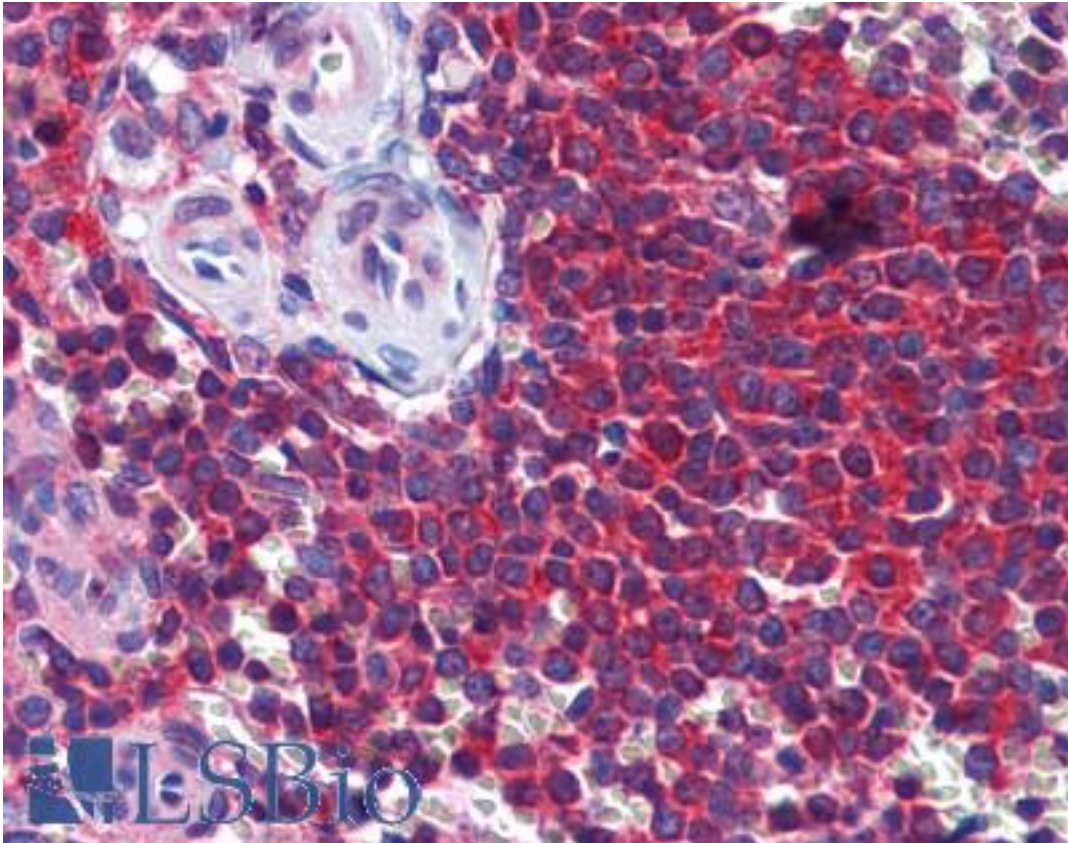
CatalogID:	LS-B6208
Validation:	This antibody replaces catalog number LS-C133667. It has been validated for use in the following assays: IHC-P.
Target:	stress-induced phosphoprotein 1 (STIP1)
Synonyms:	STIP1 Antibody, HOP Antibody, IEF-SSP-3521 Antibody, NY-REN-11 antigen Antibody, p60 Antibody, STI1 Antibody, Hsc70/Hsp90-organizing protein Antibody, Hsp70/Hsp90-organizing protein Antibody, STI1L Antibody
Host	STIP1 antibody was produced in Mouse
Clonality:	Monoclonal
Isotype:	IgG2a,k
Clone Name:	1E3
Immunogen Species:	STI1 / STIP1 antibody was raised against Human
Immunogen:	STI1 / STIP1 antibody was raised against sTIP1 (NP_006810, 445 a.a. ~ 544 a.a) partial recombinant protein with GST tag. MW of the GST tag alone is 26 KDa.
Specificity:	Human STIP1
Reactivity:	Human, Mouse, Rat
Purification:	Protein A purified
Presentation:	PBS, pH 7.2
Recommended Storage:	Store at -20°C or lower. Aliquot to avoid repeated freezing and thawing.
Usage Summary:	Immunohistochemistry: Formalin-fixed paraffin-embedded sections. Sandwich ELISA: Recombinant protein. Western Blot using cell line lysates and the recombinant protein used as the immunogen.
Uses:	IHC - Paraffin (3 - 5 µg/ml), Immunofluorescence (10 µg/ml), Western blot (1:500 - 1:1000), ELISA (Optimal dilution to be determined by the researcher)
Size:	50 µg
Concentration:	0.78 mg/ml

Immunohistochemistry Image:



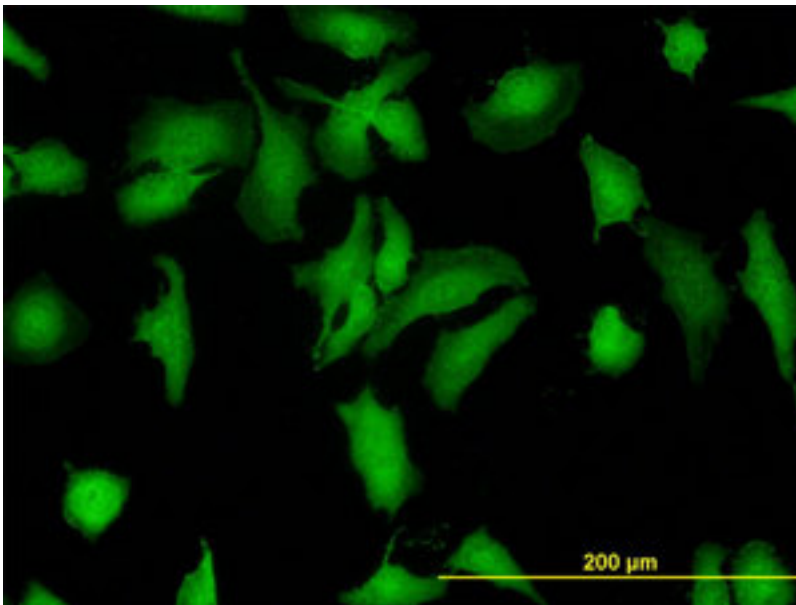
Anti-STIP1 antibody IHC of human small intestine. Immunohistochemistry of formalin-fixed, paraffin-embedded tissue after heat-induced antigen retrieval. Antibody LS-B6208 concentration 3 ug/ml.

Immunohistochemistry Image:



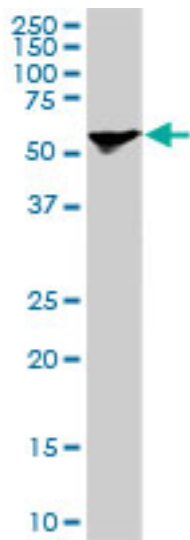
Anti-STIP1 antibody IHC of human spleen. Immunohistochemistry of formalin-fixed, paraffin-embedded tissue after heat-induced antigen retrieval. Antibody LS-B6208 concentration 3 ug/ml.

Immunofluorescence Image:



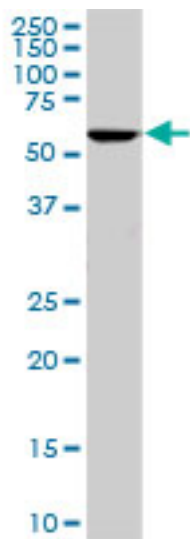
Immunofluorescence of monoclonal antibody to STIP1 on HeLa cell. [antibody concentration 10 ug/ml]

Western Blot Image:



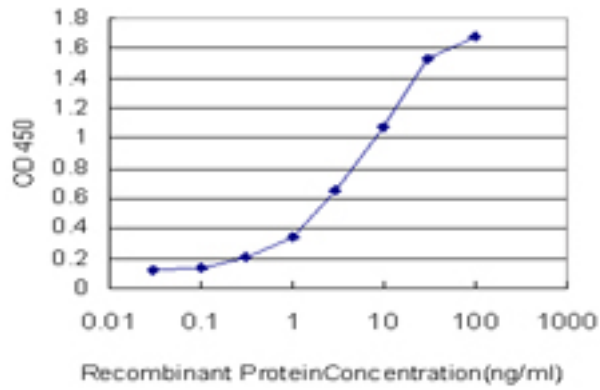
Antibody LS-B6208, Western blot of STIP1 expression in PC-12.

Western Blot Image:



Antibody LS-B6208, Western blot of STIP1 expression in NIH/3T3.

ELISA Image:



Detection limit for recombinant GST tagged STIP1 is approximately 0.03 ng/ml as a capture antibody.

Requested From:

Japan

Laboratory Reagent For In Vitro Research Use Only

Not for resale without prior written consent from LifeSpan BioSciences, Inc.

Created on 9/24/2014

© 2014 LifeSpan BioSciences