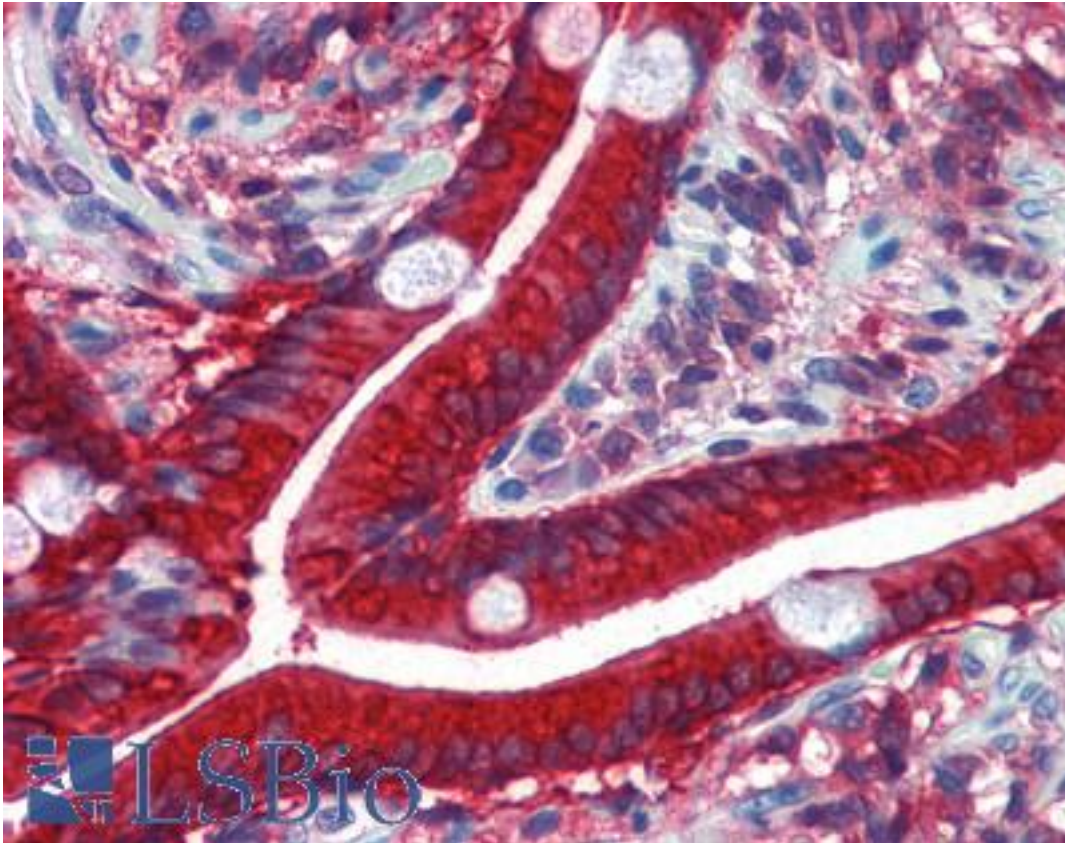


CES2 / Esterase Mouse anti-Human Monoclonal (4F12) Antibody - LS-B6190 - LSBio

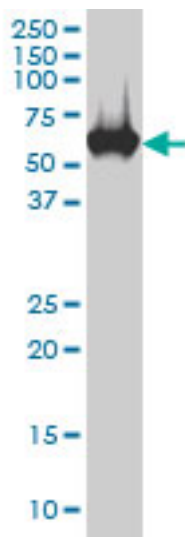
CatalogID:	LS-B6190
Validation:	This antibody replaces catalog number LS-C133579. It has been validated for use in the following assays: IHC-P.
Target:	carboxylesterase 2 (CES2)
Synonyms:	CES2 Antibody, Carboxylesterase 2 Antibody, CE-2 Antibody, CES2A1 Antibody, Cocaine esterase Antibody, Esterase Antibody, ICE Antibody, HCE-2 Antibody, PCE-2 Antibody
Host	CES2 antibody was produced in Mouse
Clonality:	Monoclonal
Isotype:	IgG2b,k
Clone Name:	4F12
Immunogen Species:	CES2 / Esterase antibody was raised against Human
Immunogen:	CES2 / Esterase antibody was raised against cES2 (NP_003860, 514 a.a. ~ 622 a.a) partial recombinant protein with GST tag. MW of the GST tag alone is 26 KDa.
Specificity:	Human CES2
Reactivity:	Human
Purification:	Protein A purified
Presentation:	PBS, pH 7.2
Recommended Storage:	Store at -20°C or lower. Aliquot to avoid repeated freezing and thawing.
Usage Summary:	Immunohistochemistry: Formalin-fixed paraffin-embedded sections. Sandwich ELISA: Recombinant protein. Western Blot using transfected cell lysates and the recombinant protein used as the immunogen.
Uses:	IHC - Paraffin (5 µg/ml), Western blot (1:500 - 1:1000), Immunoprecipitation, ELISA (Optimal dilution to be determined by the researcher)
Size:	50 µg
Concentration:	0.5 mg/ml

Immunohistochemistry Image:



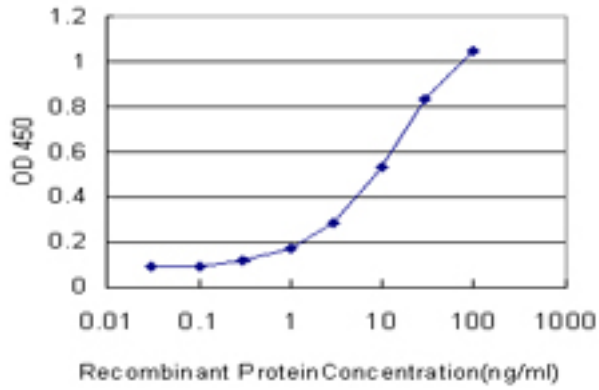
Anti-CES2 / Esterase antibody IHC of human small intestine. Immunohistochemistry of formalin-fixed, paraffin-embedded tissue after heat-induced antigen retrieval. Antibody LS-B6190 concentration 5 ug/ml.

Western Blot Image:



Antibody LS-B6190 Western blot of CES2 expression in HepG2.

ELISA Image:



Detection limit for recombinant GST tagged CES2 is approximately 0.3 ng/ml as a capture antibody.

Requested From:

Japan

Laboratory Reagent For In Vitro Research Use Only

Not for resale without prior written consent from LifeSpan BioSciences, Inc.

Created on 9/24/2014

© 2014 LifeSpan BioSciences