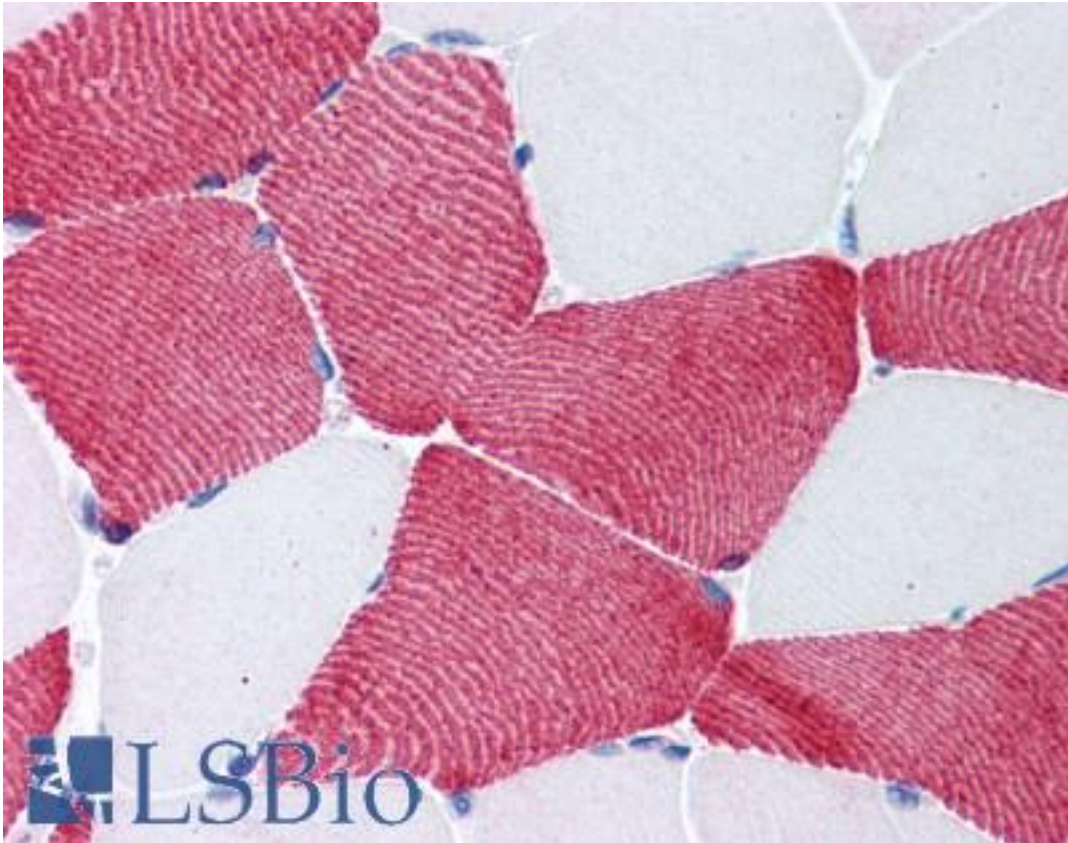


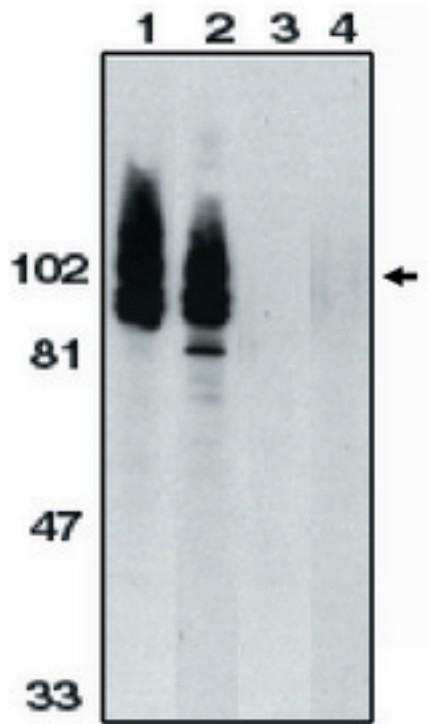
ADAM17 / TACE Rabbit anti-Human Polyclonal (aa807-823) Antibody - LS-B619 - LSBio	
CatalogID:	LS-B619
Validation:	This antibody replaces catalog number LS-C26615. It has been validated for use in the following assays: IHC.
Target:	ADAM metallopeptidase domain 17 (ADAM17)
Synonyms:	ADAM17 Antibody, CD156B Antibody, CD156b antigen Antibody, CSVP Antibody, ADAM 17 Antibody, NISBD Antibody, TNF-alpha converting enzyme Antibody, TNF-alpha convertase Antibody, TNF-alpha-converting enzyme Antibody, Snake venom-like protease Antibody, TACE Antibody
Family / Subfamily:	Protease / Metallopeptidase M12B
Host	ADAM17 antibody was produced in Rabbit
Clonality:	Polyclonal
Immunogen Species:	ADAM17 / TACE antibody was raised against Human
Antigen Type:	Synthetic peptide
Immunogen:	ADAM17 / TACE antibody was raised against synthetic peptide from human ADAM17.
Specificity:	Amino acids 807 to 823 of human TACE
Epitope:	aa807-823
Reactivity:	Human, Mouse, Rat
Purification:	Immunoaffinity purified
Presentation:	PBS, 0.02% sodium azide.
Recommended Storage:	Long term: -20°C; Short term: +4°C. Avoid repeat freeze-thaw cycles.
Usage Summary:	Immunohistochemistry: LS-B619 was validated for use in immunohistochemistry on a panel of 21 formalin-fixed, paraffin-embedded (FFPE) human tissues after heat induced antigen retrieval in pH 6.0 citrate buffer. After incubation with the primary antibody, slides were incubated with biotinylated secondary antibody, followed by alkaline phosphatase-streptavidin and chromogen. The stained slides were evaluated by a pathologist to confirm staining specificity. The optimal working concentration for LS-B619 was determined to be 20 ug/ml.
Uses:	IHC - Paraffin (20 µg/ml), Western blot (Optimal dilution to be determined by the researcher)
Size:	50 µg
Concentration:	1 mg/ml

Immunohistochemistry Image:



Anti-ADAM17 antibody IHC of human skeletal muscle. Immunohistochemistry of formalin-fixed, paraffin-embedded tissue after heat-induced antigen retrieval. Antibody LS-B619 concentration 20 ug/ml.

Western Blot Image:



Western blot of anti-TACE (CT) antibody at 1 ug/ml on HeLa (1,3) an Jurkat (2,4) whole cell lysate in the absence (1,2) and presence (3,4) of blocking peptide.

Requested From:

Japan

Laboratory Reagent For In Vitro Research Use Only

Not for resale without prior written consent from LifeSpan BioSciences, Inc.

Created on 9/24/2014

© 2014 LifeSpan BioSciences