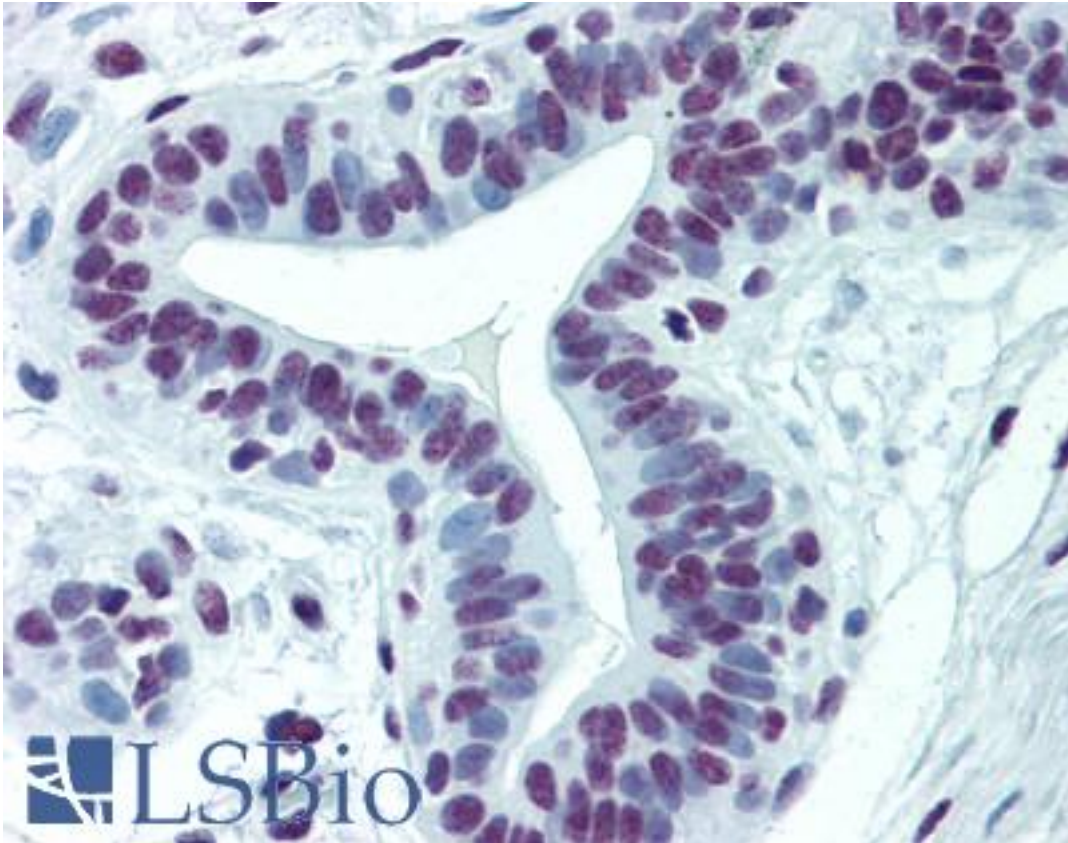


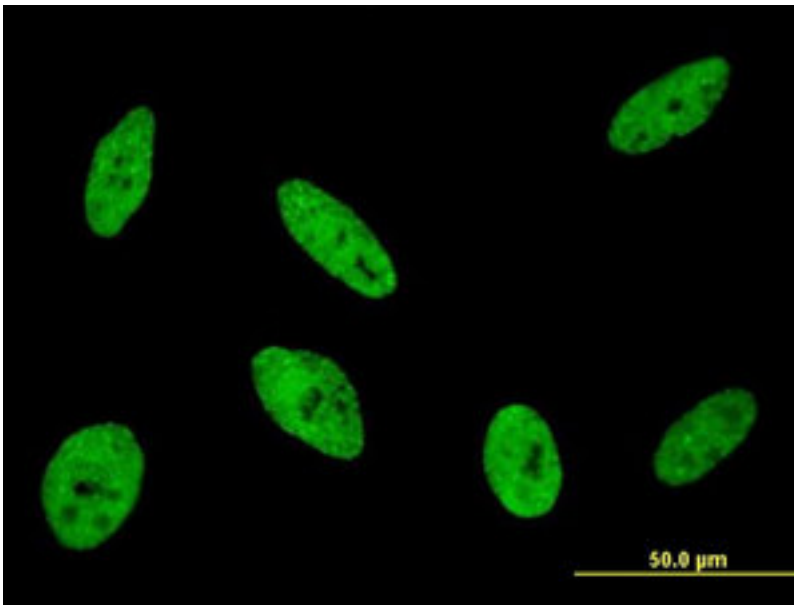
CDKL1 Mouse anti-Human Monoclonal (5B11) Antibody - LS-B6188 - LSBio	
CatalogID:	LS-B6188
Validation:	This antibody replaces catalog number LS-C133576. It has been validated for use in the following assays: IHC-P.
Target:	cyclin-dependent kinase-like 1 (CDC2-related kinase) (CDKL1)
Synonyms:	CDKL1 Antibody, CDC2-related kinase 1 Antibody, KKIALRE Antibody, p42 Antibody, Protein kinase p42 KKIALRE Antibody, Cyclin-dependent kinase-like 1 Antibody
Family / Subfamily:	Protein Kinase / CDKL
Host	CDKL1 antibody was produced in Mouse
Clonality:	Monoclonal
Isotype:	IgG2a,k
Clone Name:	5B11
Immunogen Species:	CDKL1 antibody was raised against Human
Antigen Type:	Recombinant protein
Immunogen:	CDKL1 antibody was raised against cDKL1 (NP_004187, 259 a.a. ~ 358 a.a) partial recombinant protein with GST tag. MW of the GST tag alone is 26 KDa.
Specificity:	Human CDKL1
Reactivity:	Human
Purification:	Protein A purified
Presentation:	PBS, pH 7.2
Recommended Storage:	Store at -20°C or lower. Aliquot to avoid repeated freezing and thawing.
Usage Summary:	Immunohistochemistry: Formalin-fixed paraffin-embedded sections. Sandwich ELISA: Recombinant protein. Western Blot using tissue lysates and the recombinant protein used as the immunogen.
Uses:	IHC - Paraffin (5 µg/ml), Immunofluorescence (10 µg/ml), Western blot (1:500 - 1:1000), ELISA (Optimal dilution to be determined by the researcher)
Size:	50 µg
Concentration:	0.2 mg/ml

Immunohistochemistry Image:



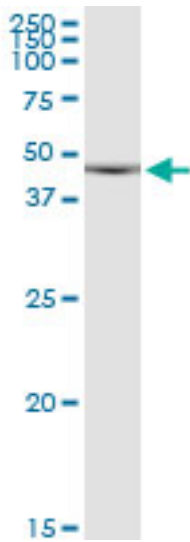
Anti-CDKL1 antibody IHC of human breast. Immunohistochemistry of formalin-fixed, paraffin-embedded tissue after heat-induced antigen retrieval. Antibody LS-B6188 concentration 5 ug/ml.

Immunofluorescence Image:



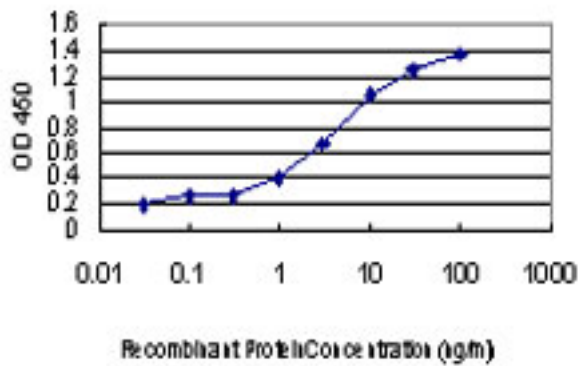
Immunofluorescence of monoclonal antibody to CDKL1 on HeLa cell. [antibody concentration 10 ug/ml].

Western Blot Image:



Antibody LS-B6188 Western blot of CDKL1 expression in human stomach.

ELISA Image:



Detection limit for recombinant GST tagged CDKL1 is approximately 0.03 ng/ml as a capture antibody.

Requested From:

Japan

Laboratory Reagent For In Vitro Research Use Only

Not for resale without prior written consent from LifeSpan BioSciences, Inc.

Created on 9/24/2014

© 2014 LifeSpan BioSciences