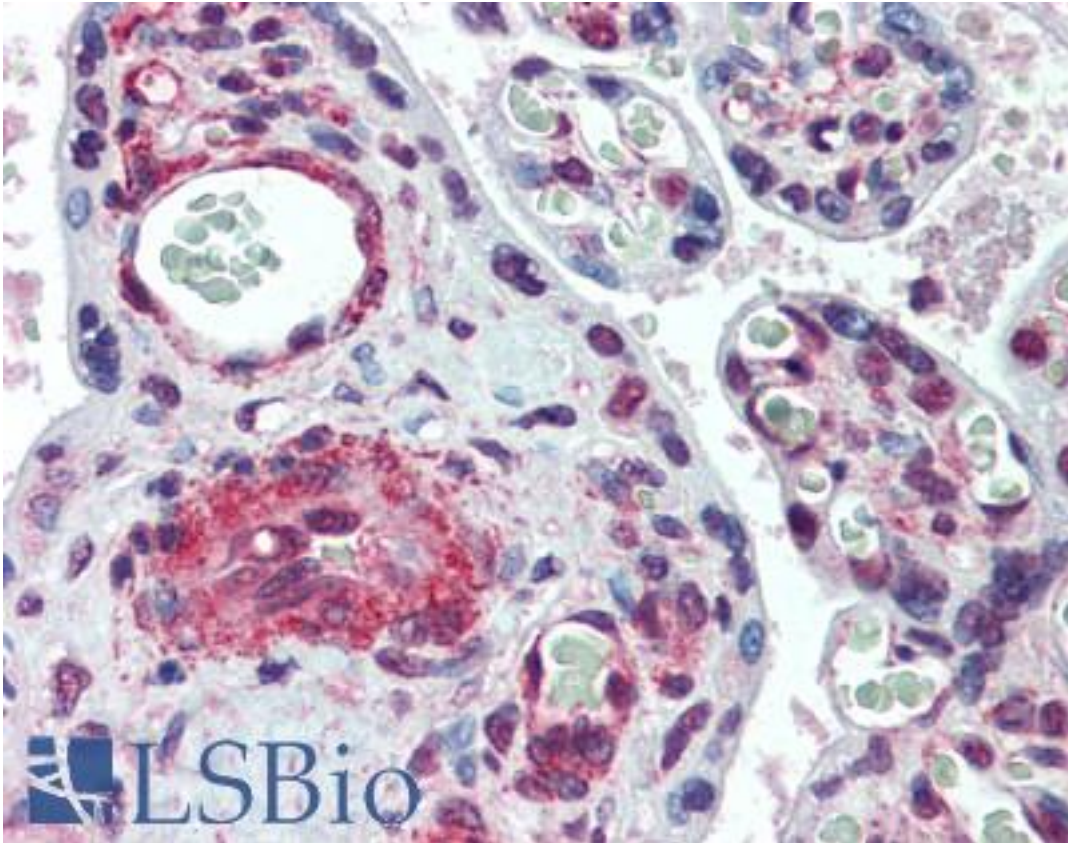


SYMPK / Symplekin Mouse anti-Human Monoclonal (4C2) Antibody - LS-B6171 - LSBio

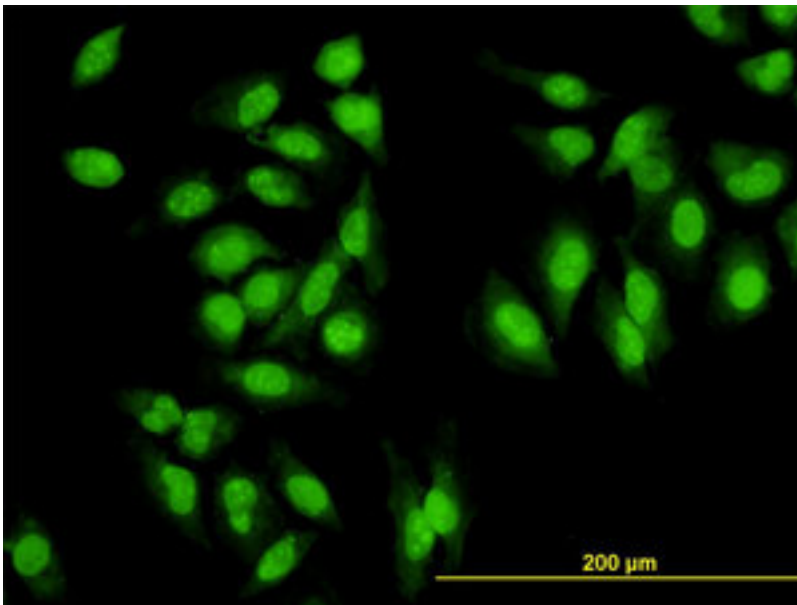
CatalogID:	LS-B6171
Validation:	This antibody replaces catalog number LS-C133540. It has been validated for use in the following assays: IHC-P.
Target:	symplekin (SYMPK)
Synonyms:	SYMPK Antibody, Symplekin Antibody, SYM Antibody, SPK Antibody
Host	SYMPK antibody was produced in Mouse
Clonality:	Monoclonal
Isotype:	IgG1,k
Clone Name:	4C2
Immunogen Species:	SYMPK / Symplekin antibody was raised against Human
Immunogen:	SYMPK / Symplekin antibody was raised against sYMPK (AAH30214, 1 a.a. ~ 534 a.a) full length recombinant protein with GST tag. MW of the GST tag alone is 26 KDa.
Specificity:	Human Symplekin
Reactivity:	Human
Purification:	Protein A purified
Presentation:	PBS, pH 7.2
Recommended Storage:	Store at -20°C or lower. Aliquot to avoid repeated freezing and thawing.
Usage Summary:	Immunohistochemistry: Formalin-fixed paraffin-embedded sections. Sandwich ELISA: Recombinant protein. Western Blot using transfected cell lysates, cell line lysates and the recombinant protein used as the immunogen.
Uses:	IHC - Paraffin (5 µg/ml), Immunofluorescence (10 µg/ml), Western blot (1:500 - 1:1000), ELISA (Optimal dilution to be determined by the researcher)
Size:	50 µg
Concentration:	0.5 mg/ml

Immunohistochemistry Image:



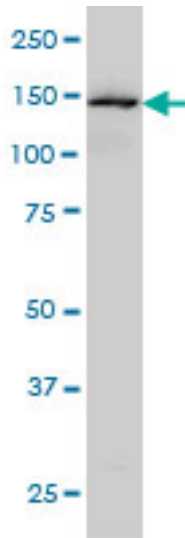
Anti-SYMPK / Symplekin antibody IHC of human placenta. Immunohistochemistry of formalin-fixed, paraffin-embedded tissue after heat-induced antigen retrieval. Antibody LS-B6171 concentration 5 ug/ml.

Immunofluorescence Image:



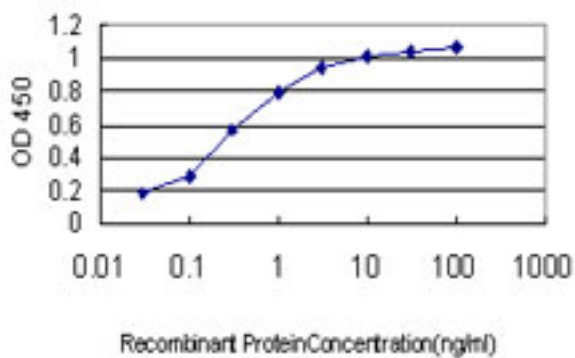
Immunofluorescence of monoclonal antibody to SYMPK on HeLa cell. [antibody concentration 10 ug/ml]

Western Blot Image:



LS-B6171 Western blot of SYMPK expression in COLO 320 HSR.

ELISA Image:



Detection limit for recombinant GST tagged SYMPK is approximately 0.03 ng/ml as a capture antibody.

Requested From:

Japan

Laboratory Reagent For In Vitro Research Use Only

Not for resale without prior written consent from LifeSpan BioSciences, Inc.

Created on 9/24/2014

© 2014 LifeSpan BioSciences