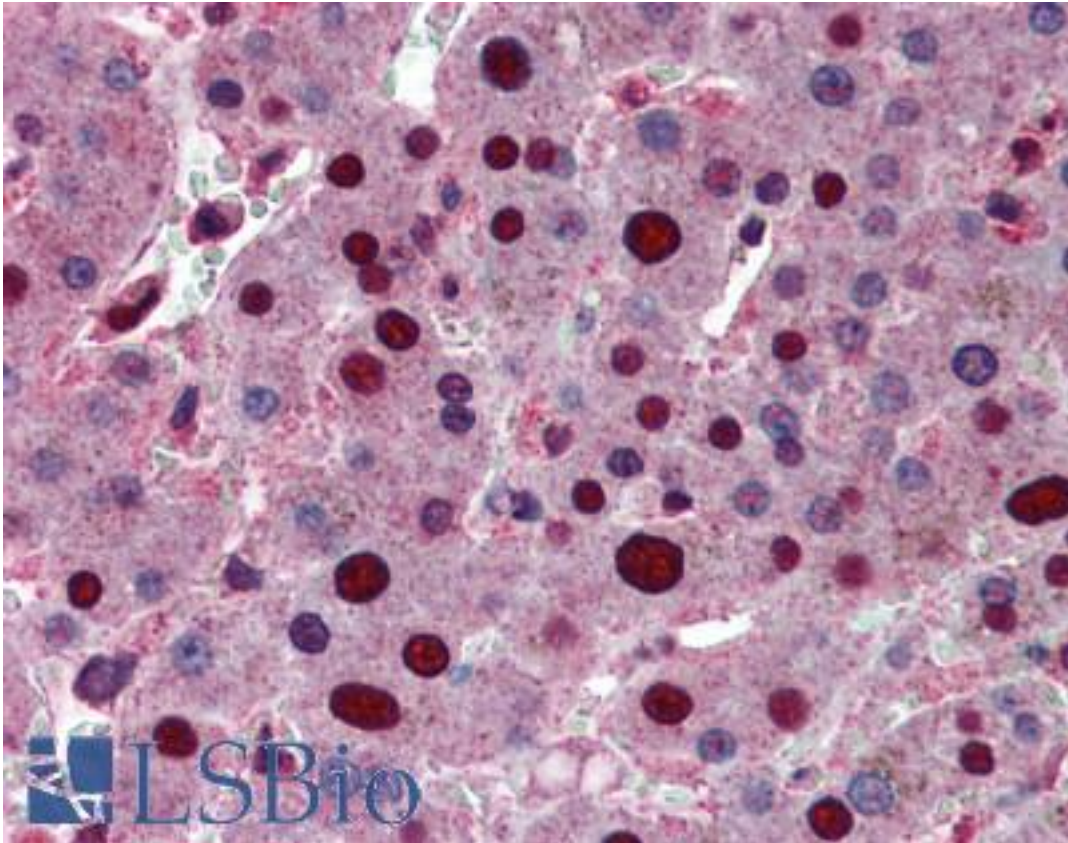


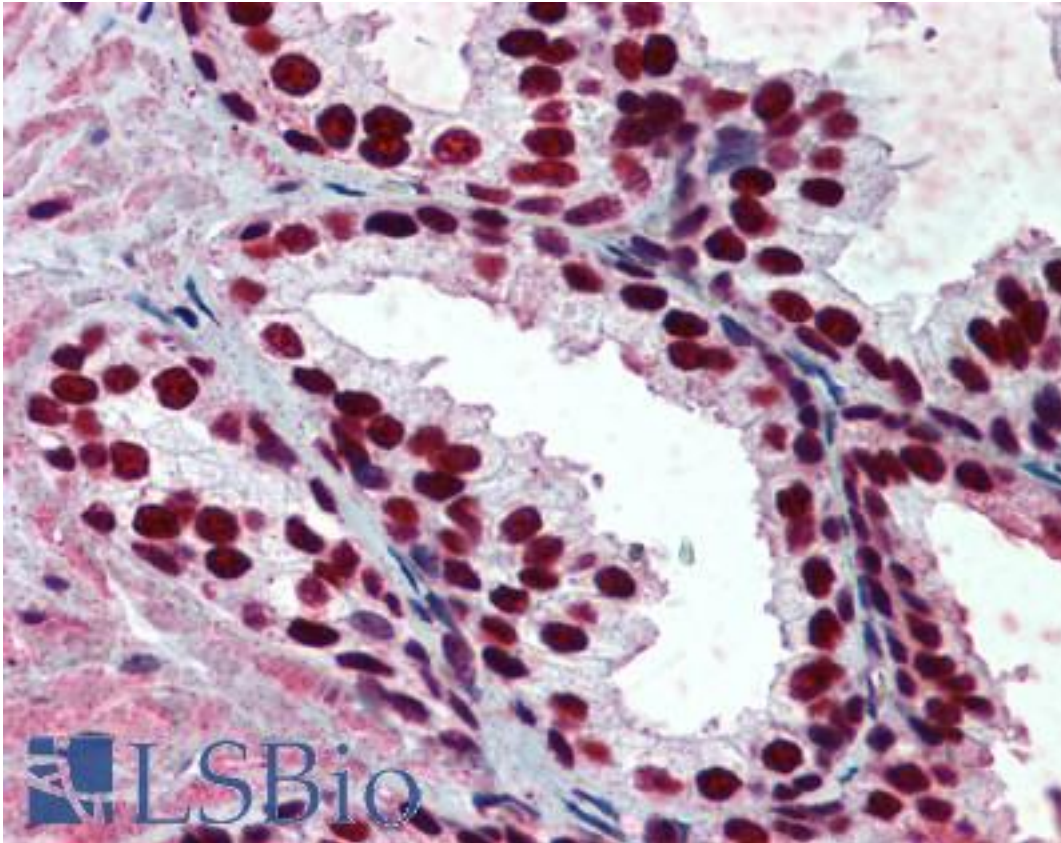
PHAP1 / ANP32A Mouse anti-Human Monoclonal (2G11-4A5) Antibody - LS-B6170 - LSBio	
<b>CatalogID:</b>	LS-B6170
<b>Validation:</b>	This antibody replaces catalog number LS-C133538. It has been validated for use in the following assays: IHC-P.
<b>Target:</b>	acidic (leucine-rich) nuclear phosphoprotein 32 family, member A (ANP32A)
<b>Synonyms:</b>	ANP32A Antibody, Hepatopoietin Cn Antibody, I1PP2A Antibody, LANP Antibody, HPPCn Antibody, PHAP1 Antibody, PHAPI Antibody, MAPM Antibody, PP32 Antibody, C15orf1 Antibody, Mapmodulin Antibody
<b>Host</b>	ANP32A antibody was produced in Mouse
<b>Clonality:</b>	Monoclonal
<b>Isotype:</b>	IgG1,k
<b>Clone Name:</b>	2G11-4A5
<b>Immunogen Species:</b>	PHAP1 / ANP32A antibody was raised against Human
<b>Immunogen:</b>	PHAP1 / ANP32A antibody was raised against aNP32A (AAH07200, 1 a.a. ~ 250 a.a) full length recombinant protein with GST tag. MW of the GST tag alone is 26 KDa.
<b>Specificity:</b>	Human PHAP1
<b>Reactivity:</b>	Human
<b>Purification:</b>	Protein A purified
<b>Presentation:</b>	PBS, pH 7.2
<b>Recommended Storage:</b>	Store at -20°C or lower. Aliquot to avoid repeated freezing and thawing.
<b>Usage Summary:</b>	Immunohistochemistry: Formalin-fixed paraffin-embedded sections. Western Blot using cell line lysates and the recombinant protein used as the immunogen.
<b>Uses:</b>	IHC - Paraffin (5 µg/ml), Immunofluorescence (10 µg/ml), Western blot (1:500 - 1:1000), ELISA (Optimal dilution to be determined by the researcher)
<b>Size:</b>	50 µg
<b>Concentration:</b>	0.3 mg/ml

**Immunohistochemistry Image:**



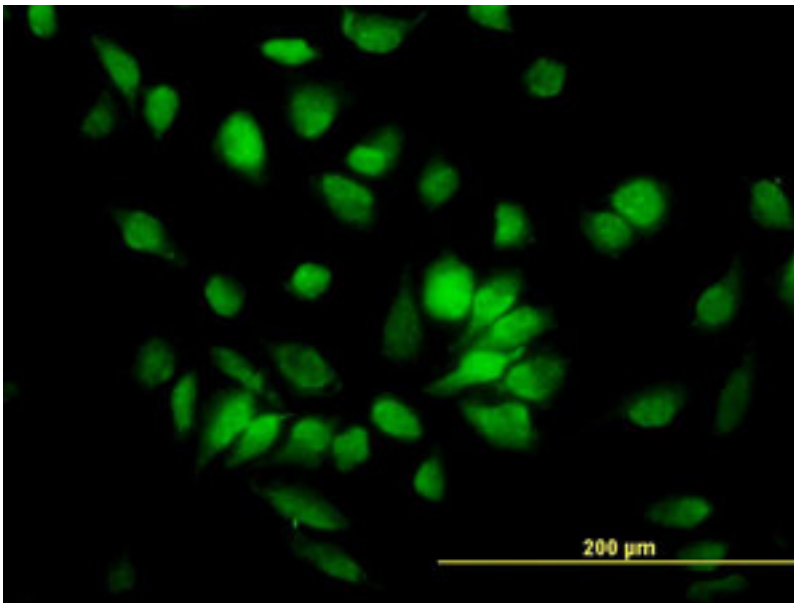
Anti-ANP32A antibody IHC of human liver. Immunohistochemistry of formalin-fixed, paraffin-embedded tissue after heat-induced antigen retrieval. Antibody LS-B6170 concentration 5 ug/ml.

**Immunohistochemistry Image:**



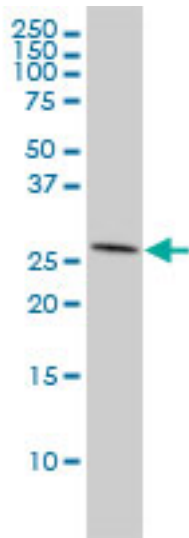
Anti-ANP32A antibody IHC of human prostate. Immunohistochemistry of formalin-fixed, paraffin-embedded tissue after heat-induced antigen retrieval. Antibody LS-B6170 concentration 5 ug/ml.

**Immunofluorescence Image:**



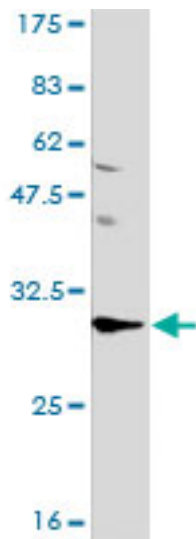
Immunofluorescence of monoclonal antibody to ANP32A on HeLa cell. [antibody concentration 10 ug/ml]

**Western Blot Image:**



LS-B6170 Western blot of ANP32A expression in HeLa.

**Western Blot Image:**



LS-B6170 Western blot of ANP32A expression in Daudi.

**Requested From:**

Japan

Laboratory Reagent For In Vitro Research Use Only

Not for resale without prior written consent from LifeSpan BioSciences, Inc.

Created on 9/24/2014

© 2014 LifeSpan BioSciences