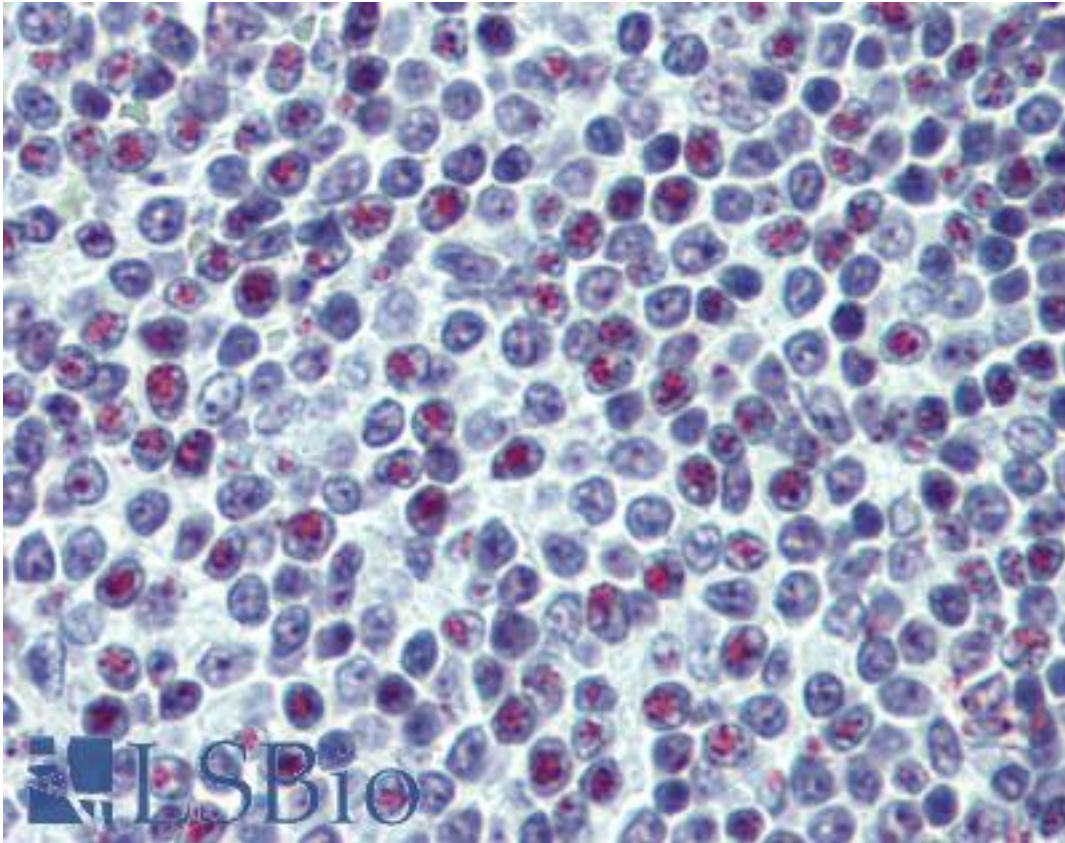


**UBTF / UBF Mouse anti-Human Monoclonal (1A2) Antibody - LS-B6166 - LSBio**

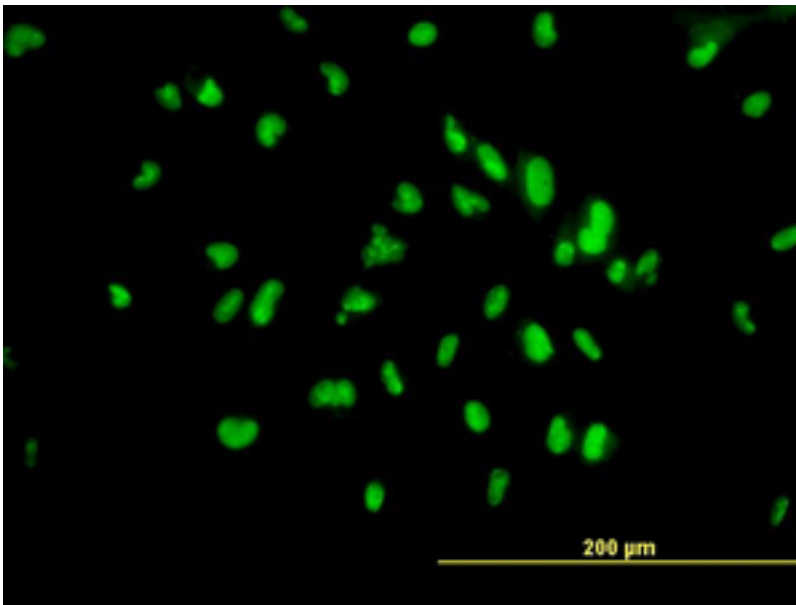
<b>CatalogID:</b>	LS-B6166
<b>Validation:</b>	This antibody replaces catalog number LS-C133510. It has been validated for use in the following assays: IHC-P.
<b>Target:</b>	upstream binding transcription factor, RNA polymerase I (UBTF)
<b>Synonyms:</b>	UBTF Antibody, Autoantigen NOR-90 Antibody, UBF Antibody, NOR-90 Antibody, UBF-1 Antibody, UBF1 Antibody, Upstream-binding factor 1 Antibody
<b>Host</b>	UBTF antibody was produced in Mouse
<b>Clonality:</b>	Monoclonal
<b>Isotype:</b>	IgG1,k
<b>Clone Name:</b>	1A2
<b>Immunogen Species:</b>	UBTF / UBF antibody was raised against Human
<b>Immunogen:</b>	UBTF / UBF antibody was raised against uBTf (NP_055048, 551 a.a. ~ 651 a.a) partial recombinant protein with GST tag. MW of the GST tag alone is 26 KDa.
<b>Specificity:</b>	Human UBTF
<b>Reactivity:</b>	Human, Rat
<b>Purification:</b>	Protein A purified
<b>Presentation:</b>	PBS, pH 7.2
<b>Recommended Storage:</b>	Store at -20°C or lower. Aliquot to avoid repeated freezing and thawing.
<b>Usage Summary:</b>	Immunohistochemistry: Formalin-fixed paraffin-embedded sections. Sandwich ELISA: Recombinant protein. Western Blot using cell line lysates and the recombinant protein used as the immunogen.
<b>Uses:</b>	IHC - Paraffin (5 µg/ml), Immunofluorescence (10 µg/ml), Western blot (1:500 - 1:1000), ELISA (Optimal dilution to be determined by the researcher)
<b>Size:</b>	50 µg
<b>Concentration:</b>	0.5 mg/ml

**Immunohistochemistry Image:**



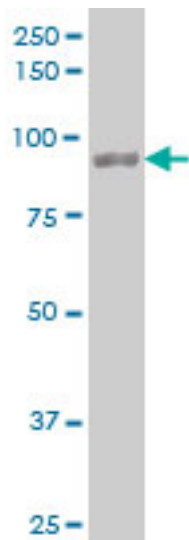
Anti-UBTF / UBF antibody IHC of human spleen. Immunohistochemistry of formalin-fixed, paraffin-embedded tissue after heat-induced antigen retrieval. Antibody LS-B6166 concentration 5 ug/ml.

**Immunofluorescence Image:**



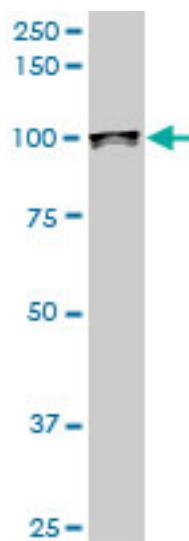
Immunofluorescence of monoclonal antibody to UBTF on HepG2 cell. [antibody concentration 10 ug/ml]

**Western Blot Image:**



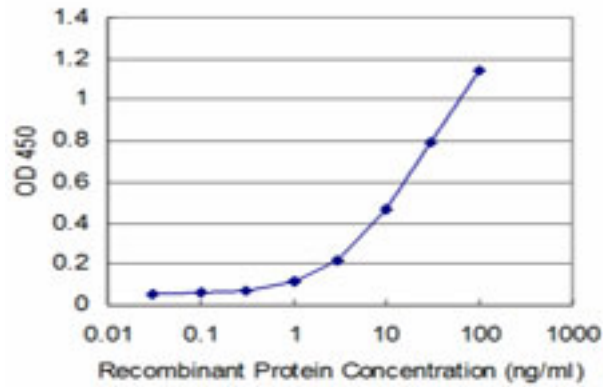
Antibody LS-B6166 Western blot of UBTF expression in HepG2.

**Western Blot Image:**



Antibody LS-B6166 Western blot of UBTF expression in PC-12.

**ELISA Image:**



Detection limit for recombinant GST tagged UBTF is approximately 1 ng/ml as a capture antibody.

**Requested From:**

Japan

Laboratory Reagent For In Vitro Research Use Only

Not for resale without prior written consent from LifeSpan BioSciences, Inc.

Created on 9/24/2014

© 2014 LifeSpan BioSciences