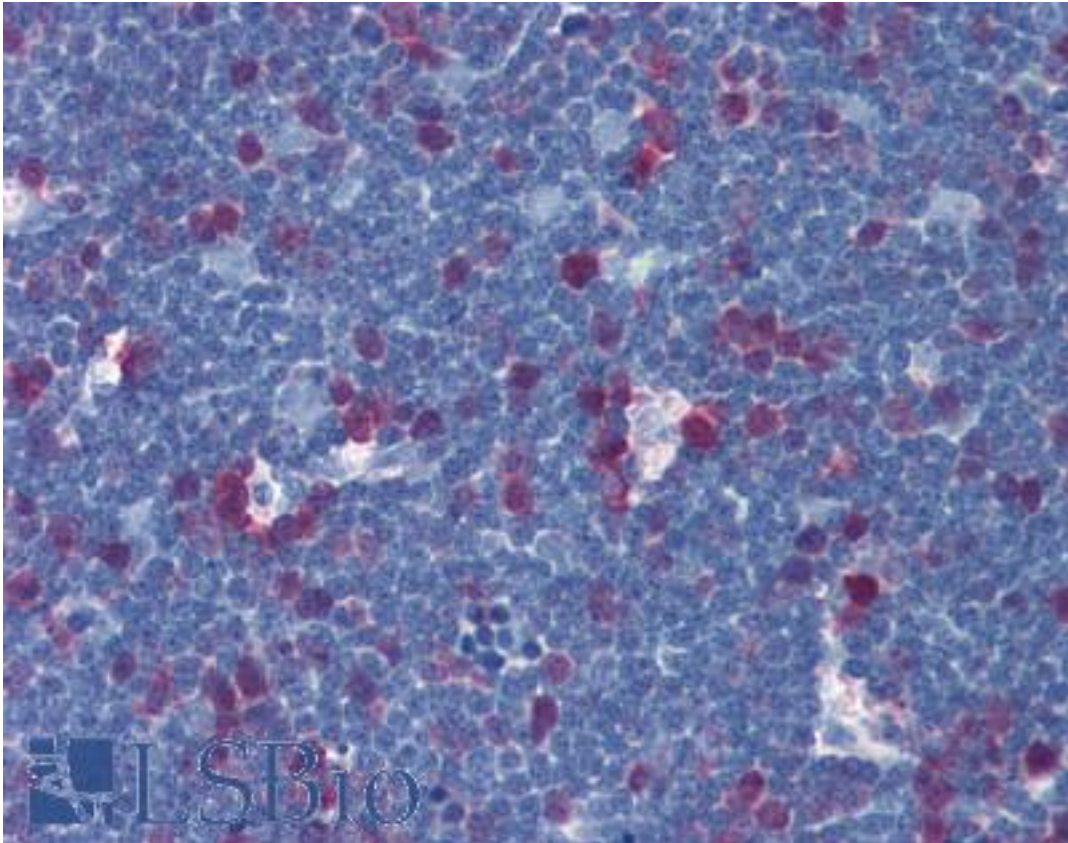


TYMS/TS/Thymidylate Synthase Mouse anti-Human Monoclonal (2B2) Antibody - LS-B6165 - LSBio

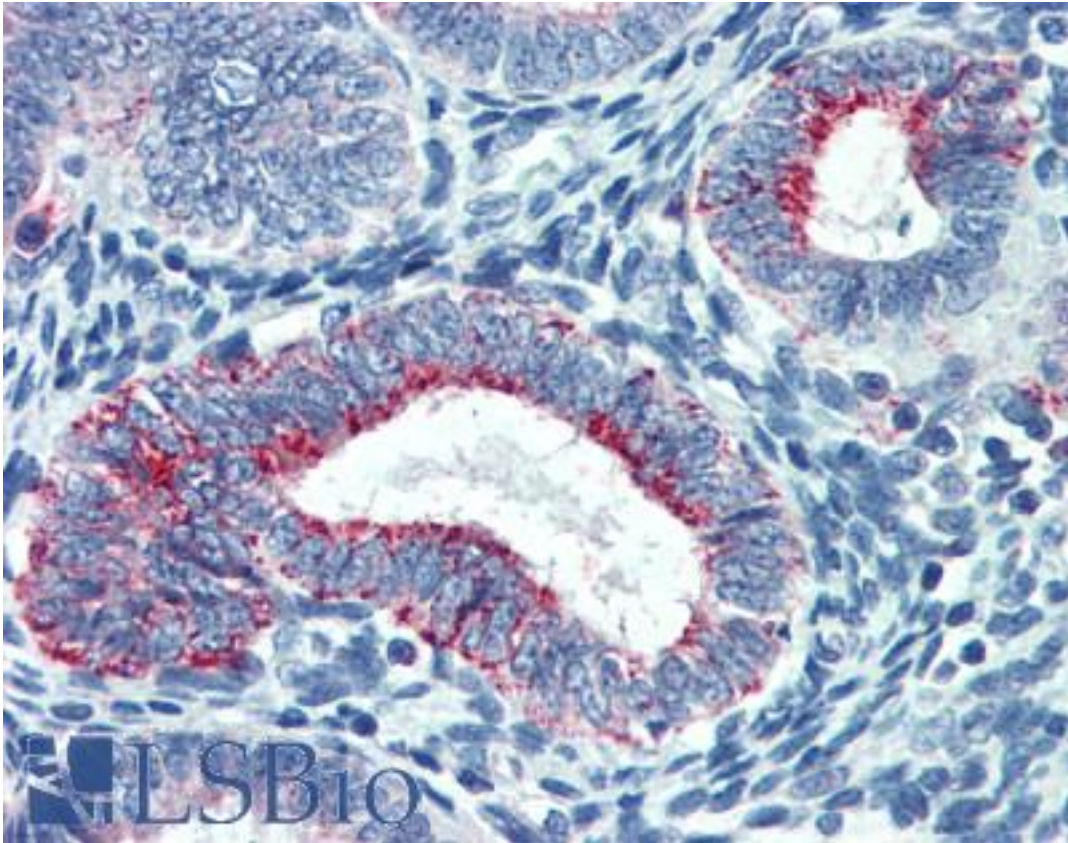
|                             |   |
|-----------------------------|---|
| <b>CatalogID:</b>           | LS-B6165  |
| <b>Validation:</b>          | This antibody replaces catalog number LS-C133970. It has been validated for use in the following assays: IHC-P.   |
| <b>Target:</b>              | thymidylate synthetase (TYMS)   |
| <b>Synonyms:</b>            | TYMS Antibody, HST422 Antibody, Thymidylate synthetase Antibody, TMS Antibody, TS Antibody, Thymidylate synthase Antibody, Tsase Antibody                                 |
| <b>Host</b>                 | TYMS antibody was produced in Mouse   |
| <b>Clonality:</b>           | Monoclonal  |
| <b>Isotype:</b>             | IgG1,k  |
| <b>Clone Name:</b>          | 2B2   |
| <b>Immunogen Species:</b>   | TYMS/TS/Thymidylate Synthase antibody was raised against Human  |
| <b>Immunogen:</b>           | TYMS/TS/Thymidylate Synthase antibody was raised against tYMS (AAH13919, 111 a.a. ~ 211 a.a) partial recombinant protein with GST tag. MW of the GST tag alone is 26 KDa. |
| <b>Specificity:</b>         | Human TYMS  |
| <b>Reactivity:</b>          | Human   |
| <b>Purification:</b>        | Protein A purified  |
| <b>Presentation:</b>        | PBS, pH 7.2   |
| <b>Recommended Storage:</b> | Store at -20°C or lower. Aliquot to avoid repeated freezing and thawing.  |
| <b>Usage Summary:</b>       | Immunohistochemistry: Formalin-fixed paraffin-embedded sections. Western Blot using tissue lysates and the recombinant protein used as the immunogen.                     |
| <b>Uses:</b>                | IHC - Paraffin (5 µg/ml), Western blot, Immunoprecipitation, ELISA (Optimal dilution to be determined by the researcher)  |
| <b>Size:</b>                | 50 µg   |
| <b>Concentration:</b>       | 1 mg/ml   |

**Immunohistochemistry Image:**



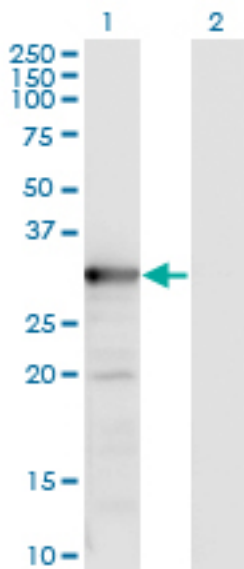
Anti-TYMS antibody IHC of human thymus. Immunohistochemistry of formalin-fixed, paraffin-embedded tissue after heat-induced antigen retrieval. Antibody LS-B6165 concentration 5 ug/ml.

**Immunohistochemistry Image:**



Anti-TYMS antibody IHC of human uterus. Immunohistochemistry of formalin-fixed, paraffin-embedded tissue after heat-induced antigen retrieval. Antibody LS-B6165 concentration 5 ug/ml.

**Western Blot Image:**



Western blot of antibody LS-B6165.

Requested From:

Japan

Laboratory Reagent For In Vitro Research Use Only

Not for resale without prior written consent from LifeSpan BioSciences, Inc.

Created on 9/24/2014

© 2014 LifeSpan BioSciences