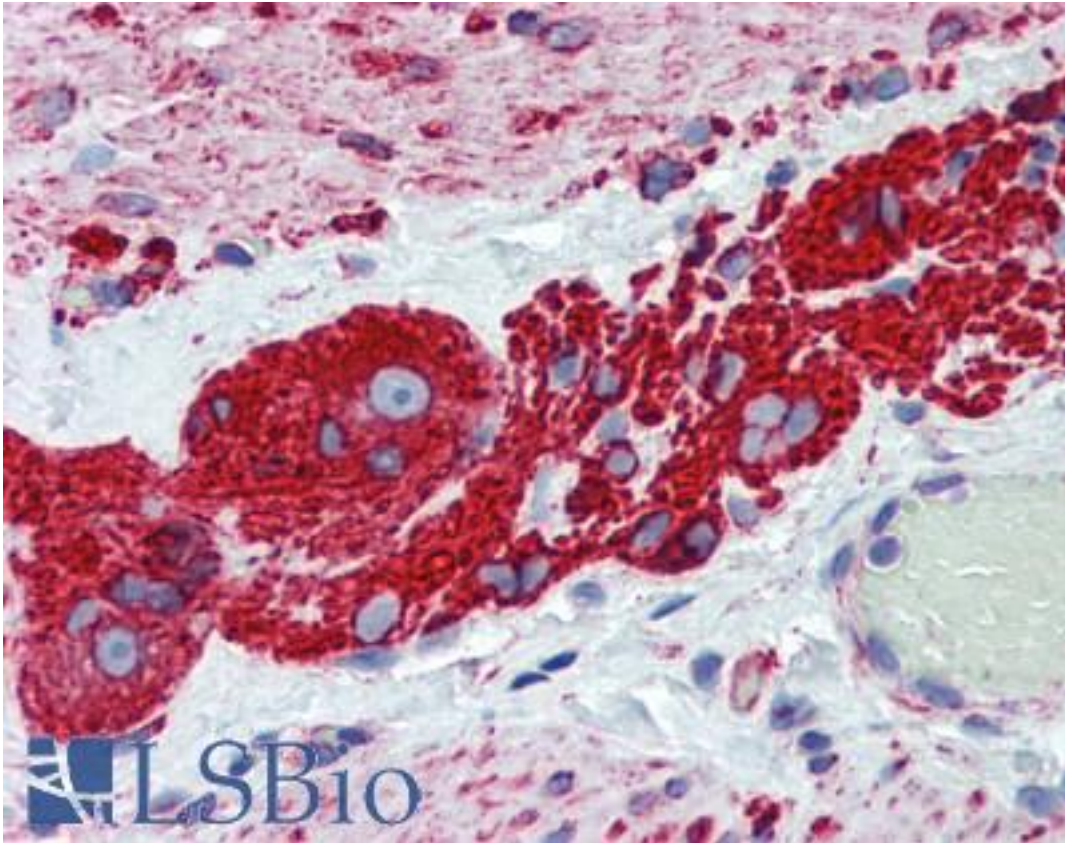


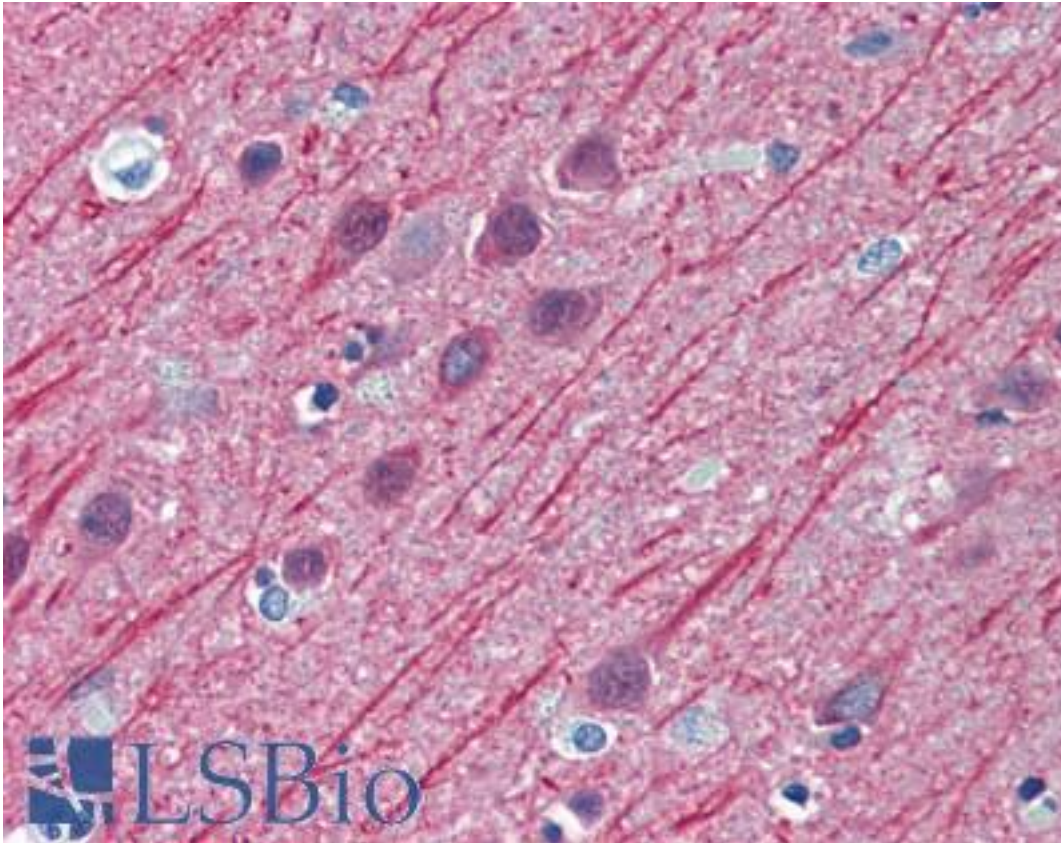
TUBB2A / Tubulin Beta 2A Mouse anti-Human Monoclonal (4C8) Antibody - LS-B6163 - LSBio	
<b>CatalogID:</b>	LS-B6163
<b>Validation:</b>	This antibody replaces catalog number LS-C133968. It has been validated for use in the following assays: IHC-P.
<b>Target:</b>	tubulin, beta 2A class IIa (TUBB2A)
<b>Synonyms:</b>	TUBB2A Antibody, Class IIa beta-tubulin Antibody, DJ40E16.7 Antibody, TUBB2 Antibody, Tubulin beta-2A chain Antibody, Tubulin, beta 2 Antibody, Tubulin, beta 2A Antibody, Tubulin, beta 2A class IIa Antibody, Beta-Tubulin Antibody, Tubulin beta-2 chain Antibody, Tubulin, beta polypeptide 2 Antibody, Tubulin, beta polypeptide Antibody
<b>Family / Subfamily:</b>	Tubulin
<b>Host</b>	TUBB2A antibody was produced in Mouse
<b>Clonality:</b>	Monoclonal
<b>Isotype:</b>	IgG2b,k
<b>Clone Name:</b>	4C8
<b>Immunogen Species:</b>	TUBB2A / Tubulin Beta 2A antibody was raised against Human
<b>Antigen Type:</b>	Recombinant protein
<b>Immunogen:</b>	TUBB2A / Tubulin Beta 2A antibody was raised against tUBB2A (AAH01194, 1 a.a. ~ 446 a.a) full-length recombinant protein with GST tag. MW of the GST tag alone is 26 KDa.
<b>Specificity:</b>	Human Tubulin Beta 2A
<b>Reactivity:</b>	Human
<b>Purification:</b>	Protein A purified
<b>Presentation:</b>	PBS, pH 7.2
<b>Recommended Storage:</b>	Store at -20°C or lower. Aliquot to avoid repeated freezing and thawing.
<b>Usage Summary:</b>	Immunohistochemistry: Formalin-fixed paraffin-embedded sections. Western Blot using cell line lysates and the recombinant protein used as the immunogen.
<b>Uses:</b>	IHC - Paraffin (2.5 µg/ml), Immunofluorescence (10 µg/ml), Western blot (1:500 - 1:1000), ELISA (Optimal dilution to be determined by the researcher)
<b>Size:</b>	50 µg
<b>Concentration:</b>	0.35 mg/ml

**Immunohistochemistry Image:**



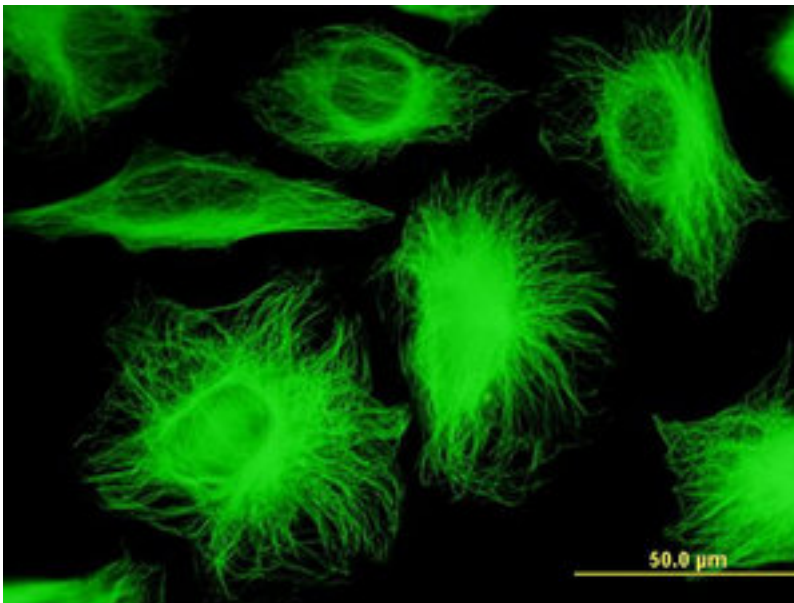
Anti-TUBB2A antibody IHC of human small intestine, myenteric plexus.  
Immunohistochemistry of formalin-fixed, paraffin-embedded tissue after heat-induced antigen retrieval. Antibody LS-B6163 concentration 2.5 ug/ml.

**Immunohistochemistry Image:**



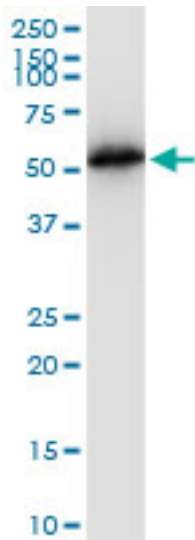
Anti-TUBB2A antibody IHC of human brain, cortex. Immunohistochemistry of formalin-fixed, paraffin-embedded tissue after heat-induced antigen retrieval. Antibody LS-B6163 concentration 2.5 ug/ml.

**Immunofluorescence Image:**



Immunofluorescence of monoclonal antibody to TUBB2A on HeLa cell. [antibody concentration 10 ug/ml].

**Western Blot Image:**



Antibody LS-B6163 Western blot of TUBB2A expression in Jurkat.

**Requested From:**

Japan

Laboratory Reagent For In Vitro Research Use Only

Not for resale without prior written consent from LifeSpan BioSciences, Inc.

Created on 9/24/2014

© 2014 LifeSpan BioSciences