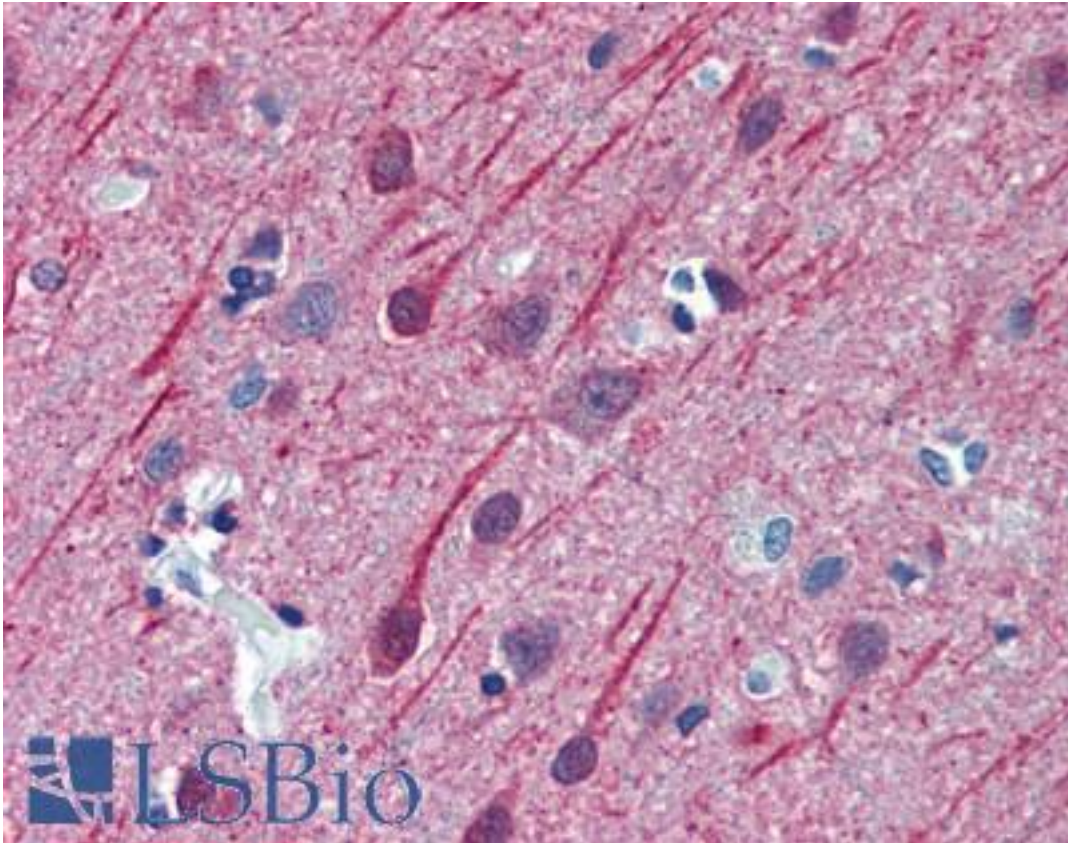


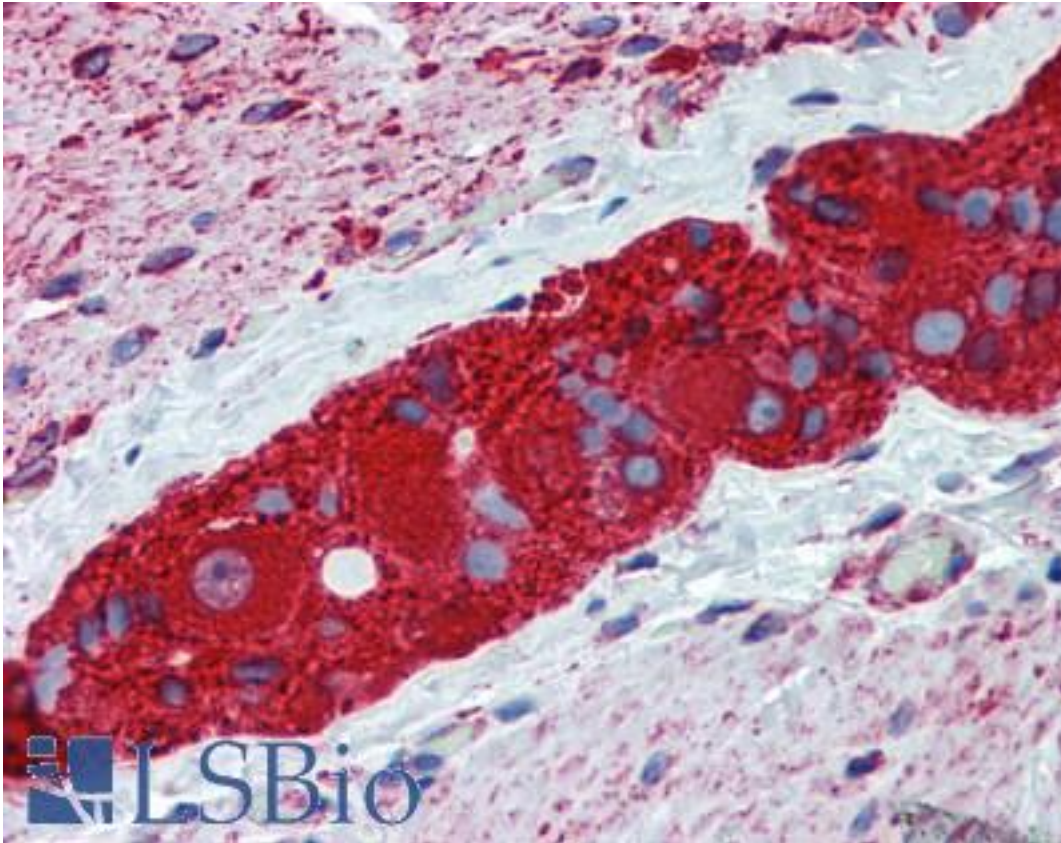
TUBB2A / Tubulin Beta 2A Mouse anti-Human Monoclonal (3B2) Antibody - LS-B6160 - LSBio	
CatalogID:	LS-B6160
Validation:	This antibody replaces catalog number LS-C133965. It has been validated for use in the following assays: IHC-P.
Target:	tubulin, beta 2A class IIa (TUBB2A)
Synonyms:	TUBB2A Antibody, Class IIa beta-tubulin Antibody, DJ40E16.7 Antibody, TUBB2 Antibody, Tubulin beta-2A chain Antibody, Tubulin, beta 2 Antibody, Tubulin, beta 2A Antibody, Tubulin, beta 2A class IIa Antibody, Beta-Tubulin Antibody, Tubulin beta-2 chain Antibody, Tubulin, beta polypeptide 2 Antibody, Tubulin, beta polypeptide Antibody
Family / Subfamily:	Tubulin
Host	TUBB2A antibody was produced in Mouse
Clonality:	Monoclonal
Isotype:	IgG2a,k
Clone Name:	3B2
Immunogen Species:	TUBB2A / Tubulin Beta 2A antibody was raised against Human
Antigen Type:	Recombinant protein
Immunogen:	TUBB2A / Tubulin Beta 2A antibody was raised against tUBB2A (AAH01194, 1 a.a. ~ 446 a.a) full-length recombinant protein with GST tag. MW of the GST tag alone is 26 KDa.
Specificity:	Human Tubulin Beta 2A
Reactivity:	Human, Mouse, Rat
Purification:	Protein A purified
Presentation:	PBS, pH 7.2
Recommended Storage:	Store at -20°C or lower. Aliquot to avoid repeated freezing and thawing.
Usage Summary:	Immunohistochemistry: Formalin-fixed paraffin-embedded sections. Western Blot using cell line lysates and the recombinant protein used as the immunogen.
Uses:	IHC - Paraffin (2.5 µg/ml), Immunofluorescence (10 µg/ml), Western blot (1:500 - 1:1000), ELISA (Optimal dilution to be determined by the researcher)
Size:	50 µg
Concentration:	0.5 mg/ml

Immunohistochemistry Image:



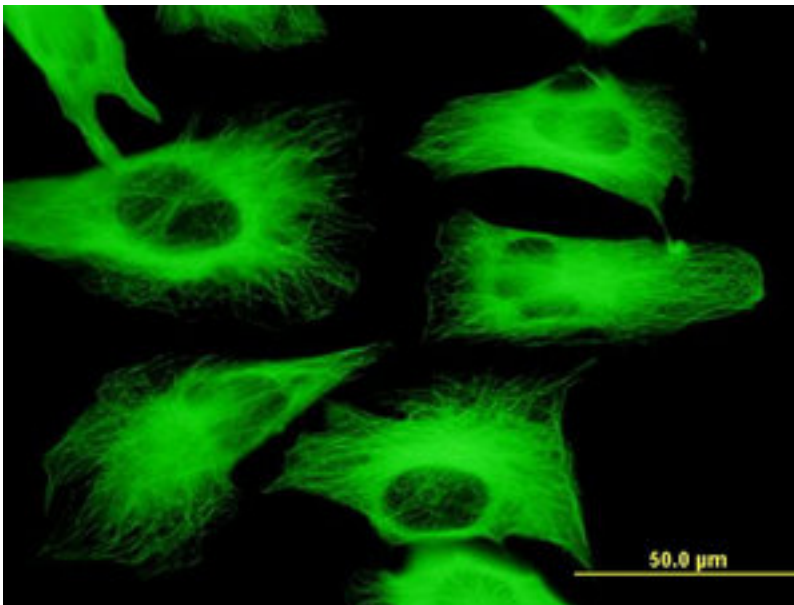
Anti-TUBB2A antibody IHC of human brain, cortex. Immunohistochemistry of formalin-fixed, paraffin-embedded tissue after heat-induced antigen retrieval. Antibody LS-B6160 concentration 2.5 ug/ml.

Immunohistochemistry Image:



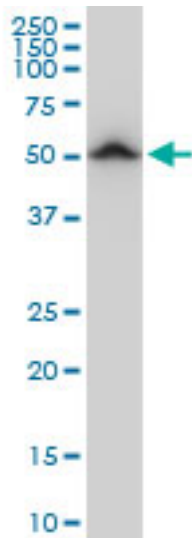
Anti-TUBB2A antibody IHC of human small intestine, myenteric plexus. Immunohistochemistry of formalin-fixed, paraffin-embedded tissue after heat-induced antigen retrieval. Antibody LS-B6160 concentration 2.5 ug/ml.

Immunofluorescence Image:



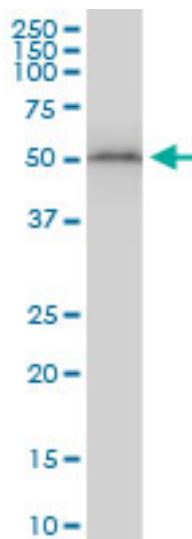
Immunofluorescence of monoclonal antibody to TUBB2A on HeLa cell. [antibody concentration 10 ug/ml].

Western Blot Image:



Antibody LS-B6160 Western blot of TUBB2A expression in PC-12.

Western Blot Image:



Antibody LS-B6160 Western blot of TUBB2A expression in NIH/3T3.

Requested From:

Japan

Laboratory Reagent For In Vitro Research Use Only

Not for resale without prior written consent from LifeSpan BioSciences, Inc.

Created on 9/24/2014

© 2014 LifeSpan BioSciences