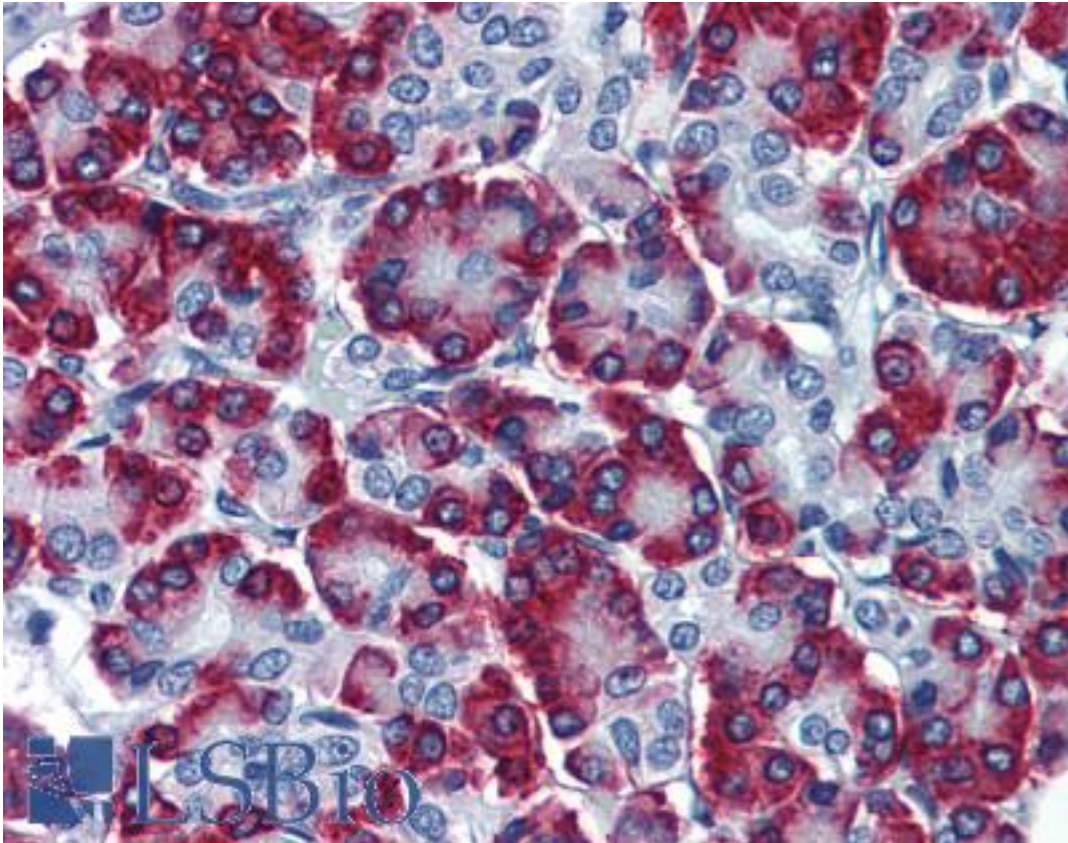


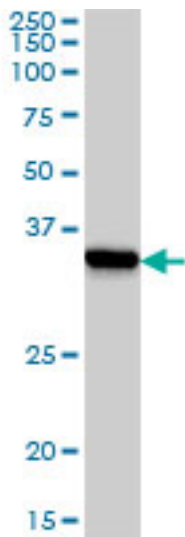
SSR1 Mouse anti-Human Monoclonal (1C11) Antibody - LS-B6153 - LSBio	
CatalogID:	LS-B6153
Validation:	This antibody replaces catalog number LS-C133452. It has been validated for use in the following assays: IHC-P.
Target:	signal sequence receptor, alpha (SSR1)
Synonyms:	SSR1 Antibody, Signal sequence receptor Antibody, SSR-alpha Antibody, TRAP-alpha Antibody, TRAP alpha Antibody, Ssr Antibody, SSR alpha subunit Antibody, Trap-a Antibody, TRAPA Antibody
Host	SSR1 antibody was produced in Mouse
Clonality:	Monoclonal
Isotype:	IgG1,k
Clone Name:	1C11
Immunogen Species:	SSR1 antibody was raised against Human
Immunogen:	SSR1 antibody was raised against sSR1 (AAH07710, 33 a.a. ~ 287 a.a) full length recombinant protein with GST tag. MW of the GST tag alone is 26 KDa.
Specificity:	Human SSR1
Reactivity:	Human
Purification:	Protein A purified
Presentation:	PBS, pH 7.2
Recommended Storage:	Store at -20°C or lower. Aliquot to avoid repeated freezing and thawing.
Usage Summary:	Immunohistochemistry: Formalin-fixed paraffin-embedded sections. Sandwich ELISA: Recombinant protein. Western Blot using transfected cell lysates, cell line lysates and the recombinant protein used as the immunogen.
Uses:	IHC - Paraffin (5 µg/ml), Western blot (1:500 - 1:1000), ELISA (Optimal dilution to be determined by the researcher)
Size:	50 µg
Concentration:	0.39 mg/ml

Immunohistochemistry Image:



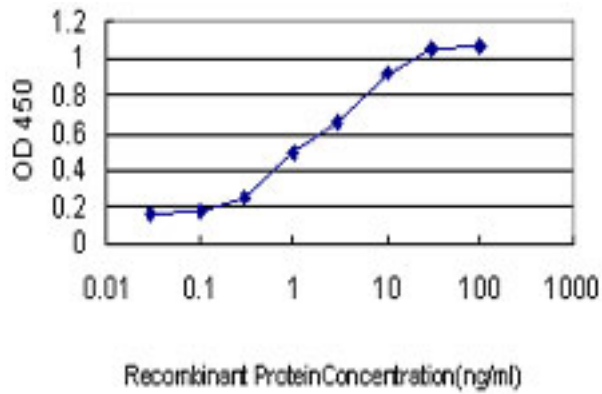
Anti-TRAP alpha antibody IHC of human pancreas. Immunohistochemistry of formalin-fixed, paraffin-embedded tissue after heat-induced antigen retrieval. Antibody LS-B6153 concentration 5 ug/ml.

Western Blot Image:



Antibody LS-B6153 Western blot of SSR1 expression in A-431.

ELISA Image:



Detection limit for recombinant GST tagged SSR1 is approximately 0.03 ng/ml as a capture antibody.

Requested From:

Japan

Laboratory Reagent For In Vitro Research Use Only

Not for resale without prior written consent from LifeSpan BioSciences, Inc.

Created on 9/24/2014

© 2014 LifeSpan BioSciences