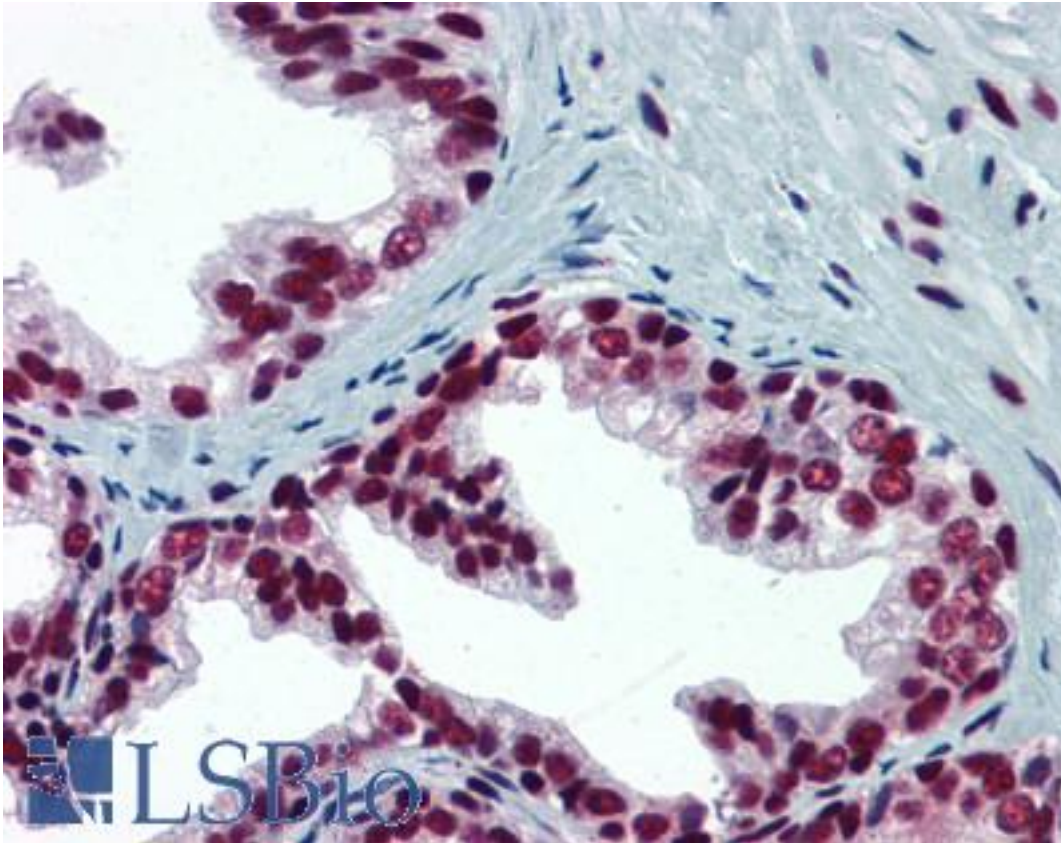


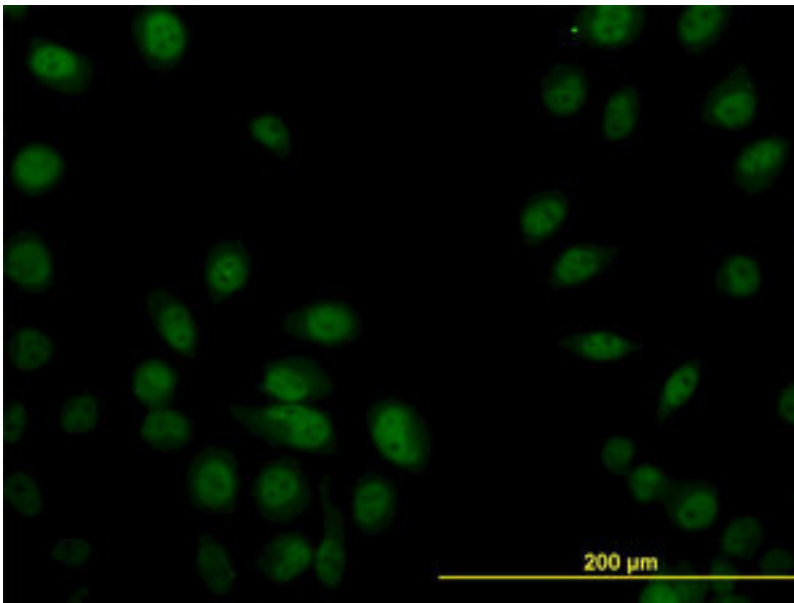
SP1 Mouse anti-Human Monoclonal (1A5) Antibody - LS-B6148 - LSBio	
CatalogID:	LS-B6148
Validation:	This antibody replaces catalog number LS-C133445. It has been validated for use in the following assays: IHC-P.
Target:	Sp1 transcription factor
Synonyms:	SP1 Antibody, Sp1 transcription factor Antibody, Transcription factor Sp1 Antibody, Specificity protein 1 Antibody, TSFP1 Antibody
Family / Subfamily:	Transcription factor
Host	SP1 antibody was produced in Mouse
Clonality:	Monoclonal
Isotype:	IgG1
Clone Name:	1A5
Immunogen Species:	SP1 antibody was raised against Human
Immunogen:	SP1 antibody was raised against sP1 (NP_612482, 89 a.a. ~ 199 a.a) partial recombinant protein with GST tag. MW of the GST tag alone is 26 KDa.
Specificity:	Human SP1
Reactivity:	Human, Mouse
Purification:	Protein A purified
Presentation:	PBS, pH 7.2
Recommended Storage:	Store at -20°C or lower. Aliquot to avoid repeated freezing and thawing.
Usage Summary:	Immunohistochemistry: Formalin-fixed paraffin-embedded sections, Formalin/PFA-fixed paraffin-embedded sections. Sandwich ELISA: Recombinant protein. Western Blot: Cell lysate, Cell lysate, Recombinant protein.
Uses:	IHC - Paraffin (5 µg/ml), Immunofluorescence (10 µg/ml), Western blot (1:500 - 1:1000), ELISA (Optimal dilution to be determined by the researcher)
Size:	50 µg
Concentration:	0.44 mg/ml

Immunohistochemistry Image:



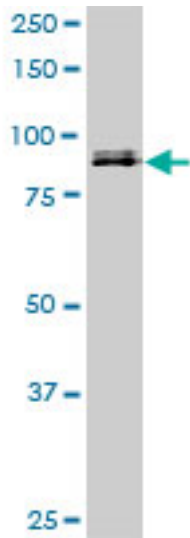
Anti-SP1 antibody IHC of human prostate. Immunohistochemistry of formalin-fixed, paraffin-embedded tissue after heat-induced antigen retrieval. Antibody LS-B6148 concentration 5 ug/ml.

Immunofluorescence Image:



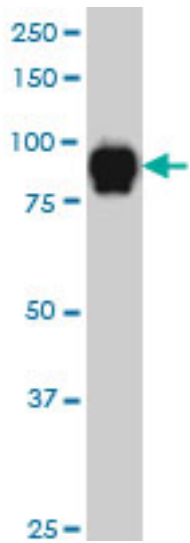
Immunofluorescence of monoclonal antibody to SP1 on HeLa cell. [antibody concentration 10 ug/ml]

Western Blot Image:



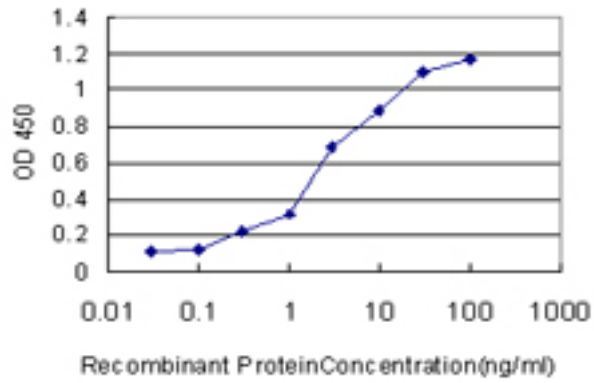
SP1 monoclonal antibody (M02), clone 1A5. Western blot of SP1 expression in NIH/3T3.

Western Blot Image:



SP1 monoclonal antibody (M02), clone 1A5 Western blot of SP1 expression in HeLa NE.

ELISA Image:



Detection limit for recombinant GST tagged SP1 is approximately 0.1 ng/ml as a capture antibody.

Requested From:

Japan

Laboratory Reagent For In Vitro Research Use Only

Not for resale without prior written consent from LifeSpan BioSciences, Inc.

Created on 9/24/2014

© 2014 LifeSpan BioSciences