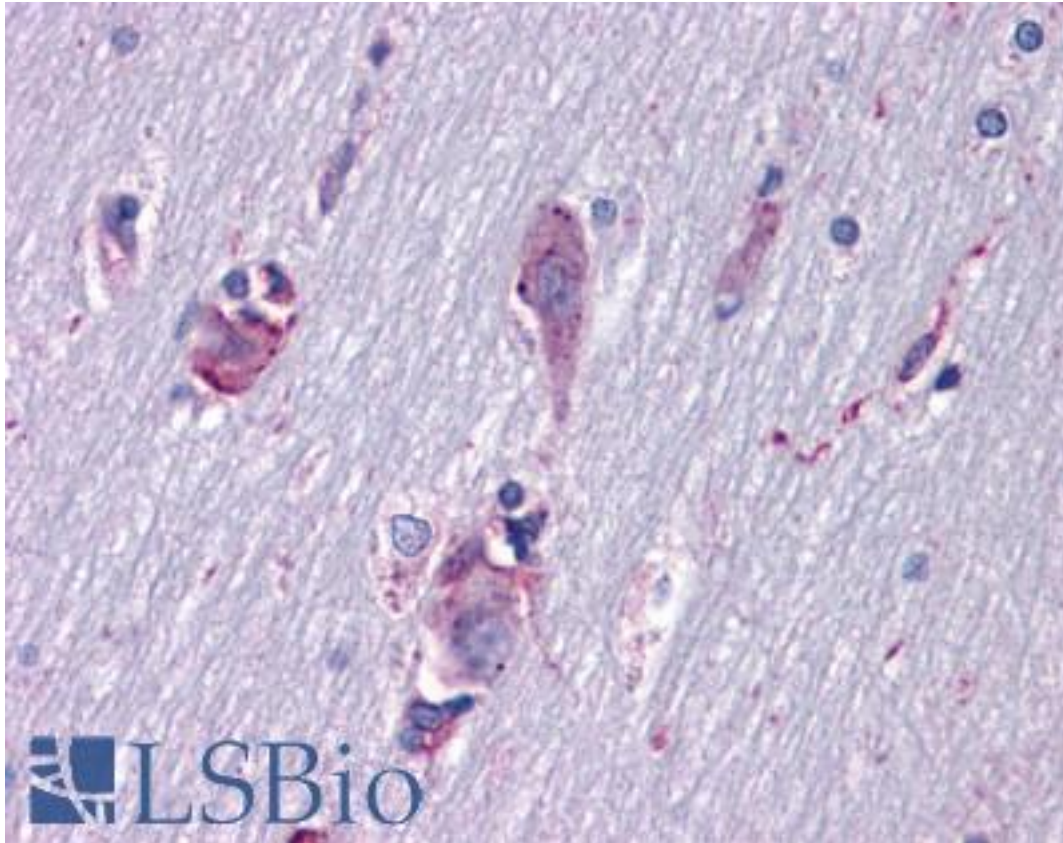


ISLET-1 / ISL1 Mouse anti-Human Monoclonal (1H9) Antibody - LS-B6125 - LSBio

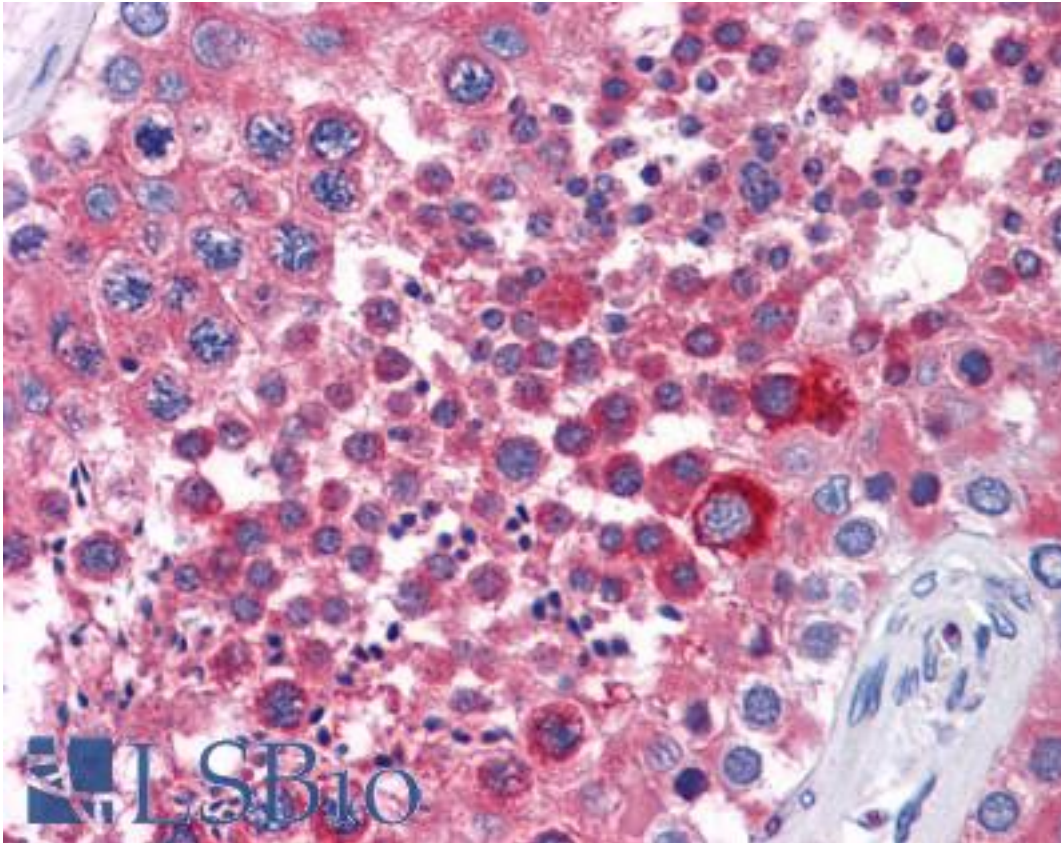
CatalogID:	LS-B6125
Validation:	This antibody replaces catalog number LS-C108826. It has been validated for use in the following assays: IHC-P.
Target:	ISL LIM homeobox 1 (ISL1)
Synonyms:	ISL1 Antibody, Isl-1 Antibody, ISLET1 Antibody, ISL LIM homeobox 1 Antibody, Islet-1 Antibody
Host	ISL1 antibody was produced in Mouse
Clonality:	Monoclonal
Isotype:	IgG1
Clone Name:	1H9
Immunogen Species:	ISLET-1 / ISL1 antibody was raised against Human
Immunogen:	ISLET-1 / ISL1 antibody was raised against purified recombinant fragment of human ISL1 expressed in E. coli.
Specificity:	Human ISL1
Reactivity:	Human
Purification:	Ascites
Presentation:	Ascites fluid, 0.03% sodium azide. Sourced in Ascites.
Recommended Storage:	Long term: -20°C; Short term: +4°C. Avoid repeat freeze-thaw cycles.
Uses:	IHC - Paraffin (1:200), Immunofluorescence (1:200 - 1:1000), Western blot (1:500 - 1:2000), ELISA (1:10000) (Optimal dilution to be determined by the researcher)
Size:	50 µl

Immunohistochemistry Image:



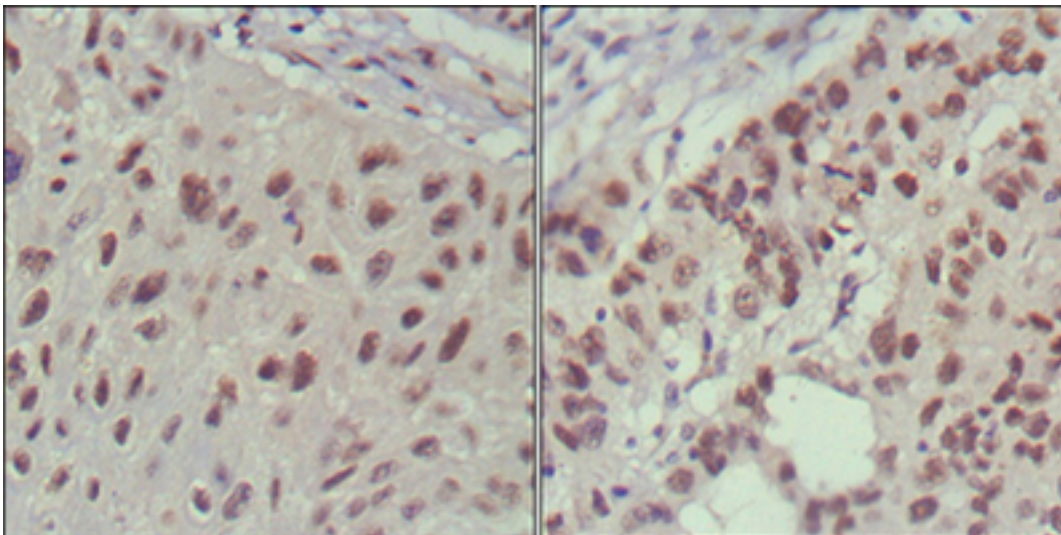
Anti-ISL1 / Islet 1 antibody IHC of human brain, cortex. Immunohistochemistry of formalin-fixed, paraffin-embedded tissue after heat-induced antigen retrieval. Antibody LS-B6125 dilution 1:200.

Immunohistochemistry Image:



Anti-ISL1 / Islet 1 antibody IHC of human testis. Immunohistochemistry of formalin-fixed, paraffin-embedded tissue after heat-induced antigen retrieval. Antibody LS-B6125 dilution 1:200.

Western Blot Image:



IHC of paraffin-embedded human lung cancer (left) and cervical carcinoma (right), showing nuclear localization using anti-ISL1 antibody with DAB staining.

Requested From:

Japan

Laboratory Reagent For In Vitro Research Use Only

Not for resale without prior written consent from LifeSpan BioSciences, Inc.

Created on 9/24/2014

© 2014 LifeSpan BioSciences