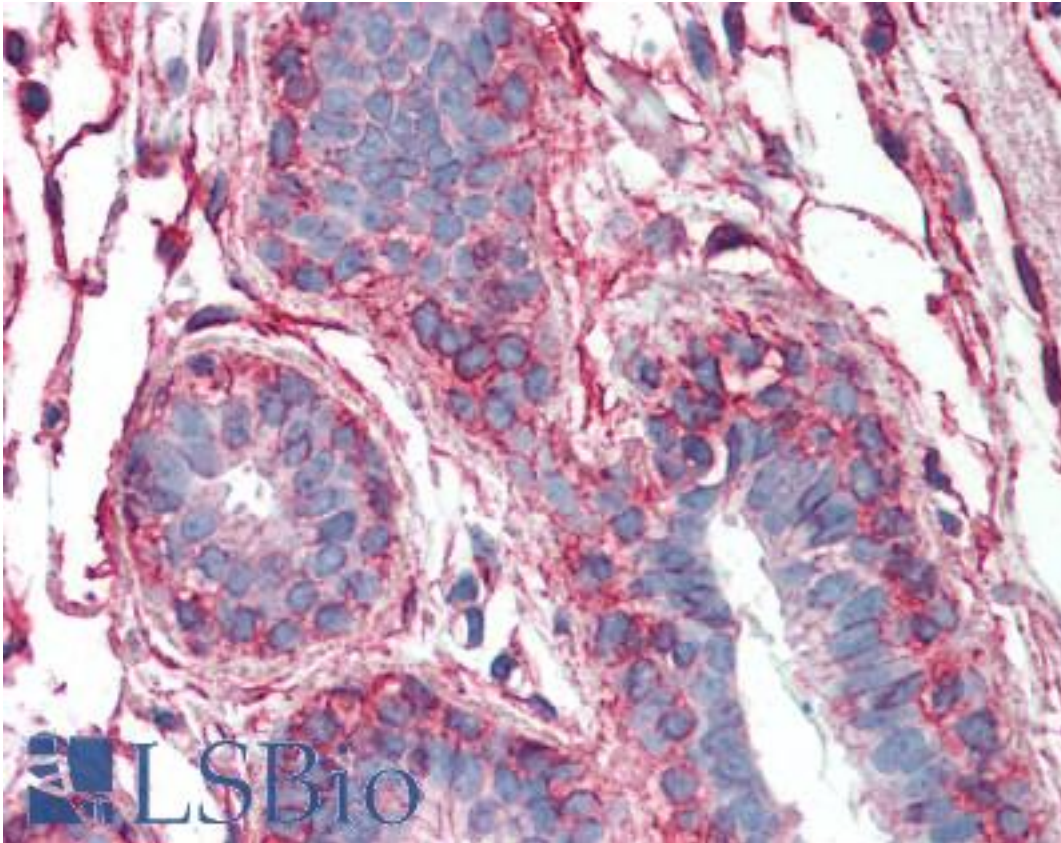


PAK1 Mouse anti-Human Monoclonal (1E11) Antibody - LS-B6113 - LSBio

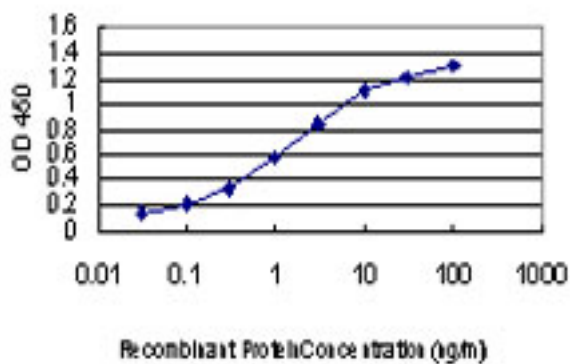
CatalogID:	LS-B6113
Validation:	This antibody replaces catalog number LS-C133359. It has been validated for use in the following assays: IHC-P.
Target:	p21 protein (Cdc42/Rac)-activated kinase 1 (PAK1)
Synonyms:	PAK1 Antibody, Alpha-PAK Antibody, p21-activated kinase 1 Antibody, p65-PAK Antibody, Rac/p21-activated kinase Antibody, STE20 homolog, yeast Antibody, PAKalpha Antibody, PAK-1 Antibody
Family / Subfamily:	Protein Kinase / PAK (STE20)
Host	PAK1 antibody was produced in Mouse
Clonality:	Monoclonal
Isotype:	IgG1,k
Clone Name:	1E11
Immunogen Species:	PAK1 antibody was raised against Human
Immunogen:	PAK1 antibody was raised against pPAK1 (NP_002567, 191 a.a. ~ 280 a.a) partial recombinant protein with GST tag. MW of the GST tag alone is 26 KDa.
Specificity:	Human PAK1
Reactivity:	Human
Purification:	Protein A purified
Presentation:	PBS, pH 7.2. Sourced in Ascites.
Recommended Storage:	Store at -20°C or lower. Aliquot to avoid repeated freezing and thawing.
Usage Summary:	Immunohistochemistry: Formalin-fixed paraffin-embedded sections. Sandwich ELISA: Recombinant protein. Western Blot with the recombinant protein used as the immunogen.
Uses:	IHC - Paraffin (5 µg/ml), Western blot (1:500 - 1:1000), ELISA (Optimal dilution to be determined by the researcher)
Size:	50 µg
Concentration:	0.39 mg/ml

Immunohistochemistry Image:



Anti-PAK1 antibody IHC of human breast. Immunohistochemistry of formalin-fixed, paraffin-embedded tissue after heat-induced antigen retrieval. Antibody LS-B6113 concentration 5 ug/ml.

ELISA Image:



Detection limit for recombinant GST tagged PAK1 is approximately 0.03 ng/ml as a capture antibody.

Requested From:

Japan

Laboratory Reagent For In Vitro Research Use Only

Not for resale without prior written consent from LifeSpan BioSciences, Inc.

Created on 9/24/2014

© 2014 LifeSpan BioSciences