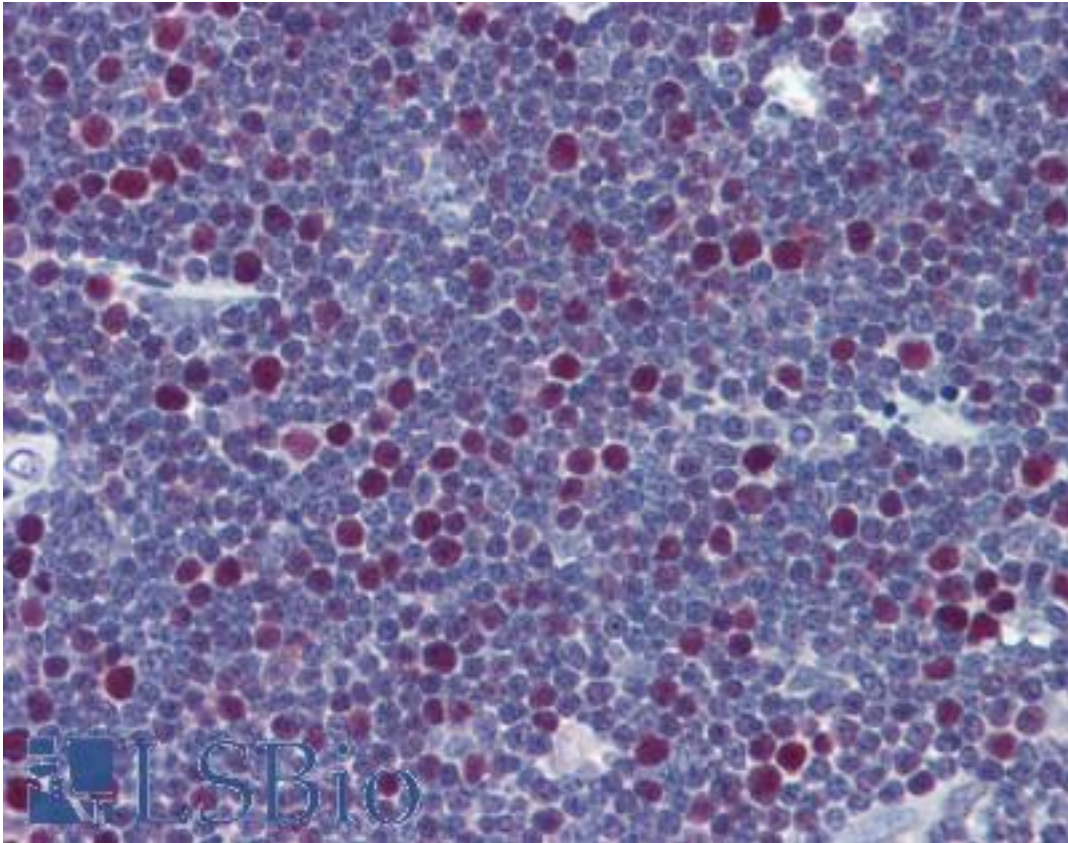


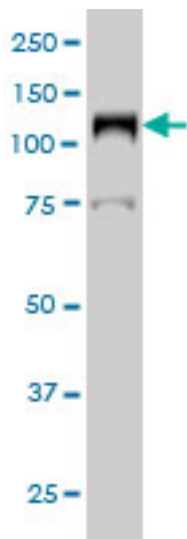
LIG1 / DNA Ligase 1 Mouse anti-Human Monoclonal (10G12) Antibody - LS-B6111 - LSBio	
CatalogID:	LS-B6111
Validation:	This antibody replaces catalog number LS-C133292. It has been validated for use in the following assays: IHC-P.
Target:	ligase I, DNA, ATP-dependent (LIG1)
Synonyms:	LIG1 Antibody, DNA ligase I Antibody, DNA ligase 1 Antibody, Ligase I, DNA, ATP-dependent Antibody
Host	LIG1 antibody was produced in Mouse
Clonality:	Monoclonal
Isotype:	IgG2a,k
Clone Name:	10G12
Immunogen Species:	LIG1 / DNA Ligase 1 antibody was raised against Human
Immunogen:	LIG1 / DNA Ligase 1 antibody was raised against IIG1 (NP_000225, 810 a.a. ~ 920 a.a) partial recombinant protein with GST tag. MW of the GST tag alone is 26 KDa.
Specificity:	Human LIG1
Reactivity:	Human
Purification:	Protein A purified
Presentation:	PBS, pH 7.4.
Recommended Storage:	Aliquot and store at -20°C or -80°C. Avoid freeze-thaw cycles.
Usage Summary:	Immunohistochemistry: Formalin-fixed paraffin-embedded sections. Sandwich ELISA: Recombinant protein. Western Blot: Cell lysate, Recombinant protein.
Uses:	IHC - Paraffin (5 µg/ml), Western blot (1:500 - 1:1000), ELISA (Optimal dilution to be determined by the researcher)
Size:	50 µg
Concentration:	0.5 mg/ml

Immunohistochemistry Image:



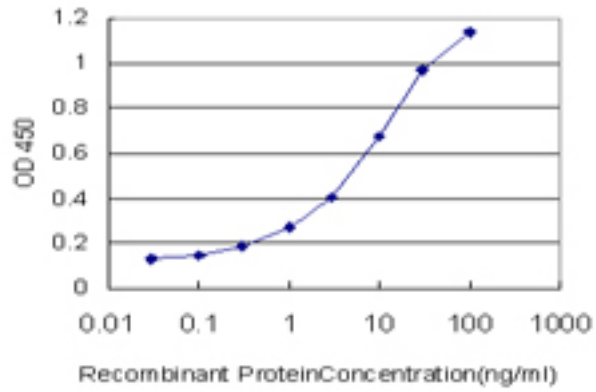
Anti-LIG1 antibody IHC of human thymus. Immunohistochemistry of formalin-fixed, paraffin-embedded tissue after heat-induced antigen retrieval. Antibody LS-B6111 concentration 5 ug/ml.

Western Blot Image:



Western blot of LIG1 expression in HeLa nuclear extract.

ELISA Image:



Detection limit for recombinant GST tagged LIG1 is approximately 0.3 ng/ml as a capture antibody.

Requested From:

Japan

Laboratory Reagent For In Vitro Research Use Only

Not for resale without prior written consent from LifeSpan BioSciences, Inc.

Created on 9/24/2014

© 2014 LifeSpan BioSciences