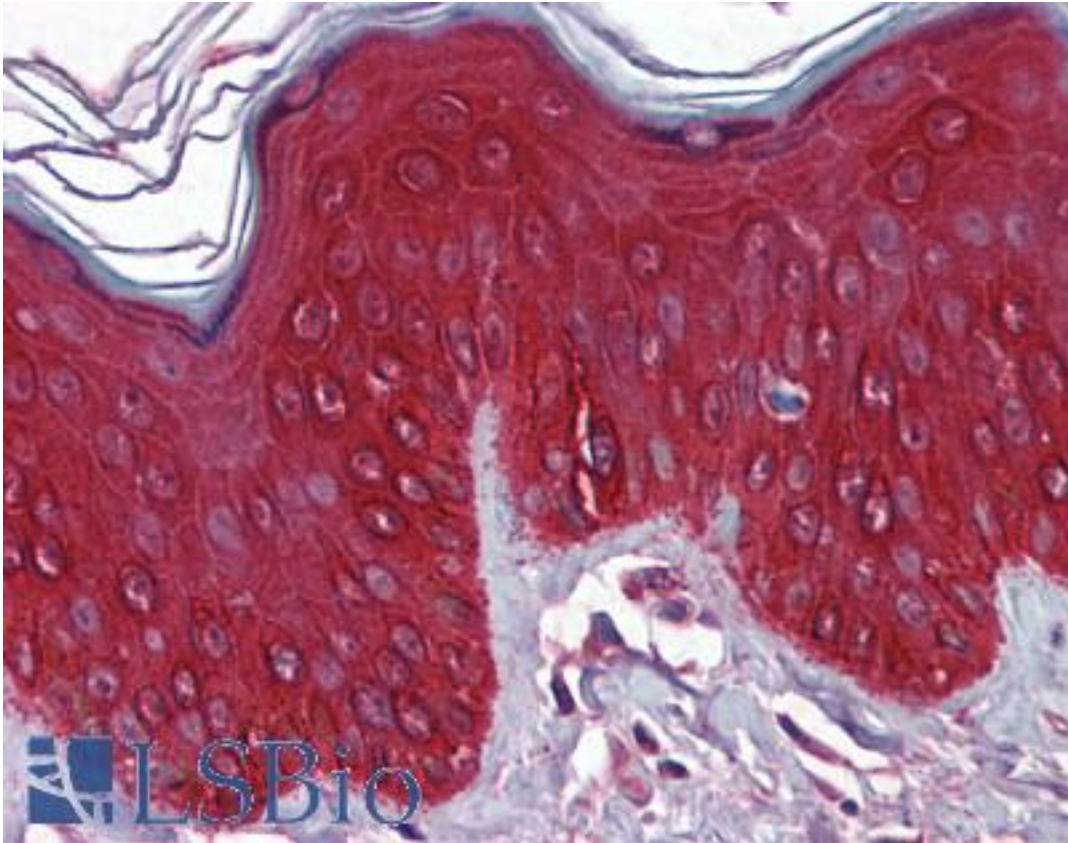


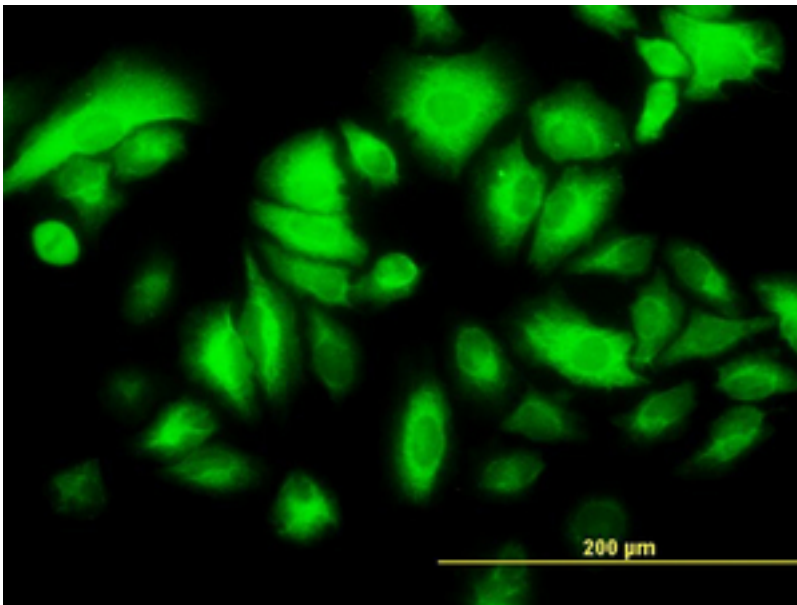
KRT17 / Cytokeratin 17 Mouse anti-Human Monoclonal (2D4-1G9) Antibody - LS-B6108 - LSBio	
<b>CatalogID:</b>	LS-B6108
<b>Validation:</b>	This antibody replaces catalog number LS-C133284. It has been validated for use in the following assays: IHC-P.
<b>Target:</b>	keratin 17 (KRT17)
<b>Synonyms:</b>	KRT17 Antibody, 39.1 Antibody, Cytokeratin 17 Antibody, Cytokeratin-17 Antibody, K17 Antibody, Keratin 17 epitope S2 Antibody, Keratin 17 epitope S4 Antibody, Keratin 17 Antibody, PC2 Antibody, PCHC1 Antibody, CK-17 Antibody, Keratin 17 epitope S1 Antibody, Keratin-17 Antibody
<b>Family / Subfamily:</b>	Keratin / not assigned-Keratin
<b>Host</b>	KRT17 antibody was produced in Mouse
<b>Clonality:</b>	Monoclonal
<b>Isotype:</b>	IgG1,k
<b>Clone Name:</b>	2D4-1G9
<b>Immunogen Species:</b>	KRT17 / Cytokeratin 17 antibody was raised against Human
<b>Immunogen:</b>	KRT17 / Cytokeratin 17 antibody was raised against kRT17 (AAH00159, 1 a.a. ~ 433 a.a) full length recombinant protein with GST tag. MW of the GST tag alone is 26 KDa.
<b>Specificity:</b>	Human KRT17
<b>Reactivity:</b>	Human
<b>Purification:</b>	Protein A purified
<b>Presentation:</b>	PBS, pH 7.2
<b>Recommended Storage:</b>	Aliquot and store at -20°C or -80°C. Avoid freeze-thaw cycles.
<b>Usage Summary:</b>	Immunohistochemistry: Formalin-fixed paraffin-embedded sections. Sandwich ELISA: Recombinant protein. Western Blot: Cell lysate, Recombinant protein.
<b>Uses:</b>	IHC - Paraffin (1.25 µg/ml), Immunofluorescence (25 µg/ml), Western blot (1:500 - 1:1000), Immunoprecipitation, ELISA (Optimal dilution to be determined by the researcher)
<b>Size:</b>	50 µg
<b>Concentration:</b>	0.37 mg/ml

**Immunohistochemistry Image:**



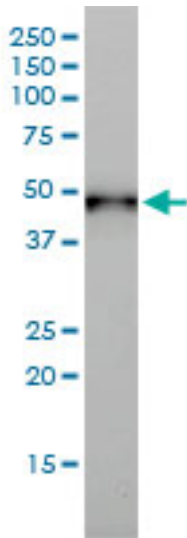
Anti-KRT17 / Cytokeratin 17 antibody IHC of human skin. Immunohistochemistry of formalin-fixed, paraffin-embedded tissue after heat-induced antigen retrieval. Antibody LS-B6108 concentration 1.25 ug/ml.

**Immunofluorescence Image:**



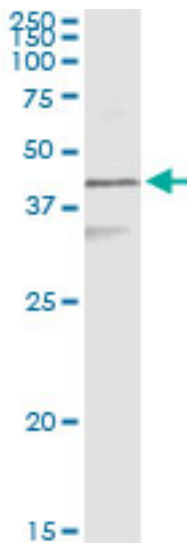
Immunofluorescence of monoclonal antibody to KRT17 on HeLa cell. [antibody concentration 25 ug/ml]

**Western Blot Image:**



Western blot of KRT17 expression in A-431 cell lysate.

**Immunoprecipitation Image:**



Immunoprecipitation of KRT17 transfected lysate using anti-KRT17 monoclonal antibody and Protein A Magnetic Bead.

**Requested From:**

Japan

Laboratory Reagent For In Vitro Research Use Only

Not for resale without prior written consent from LifeSpan BioSciences, Inc.

Created on 9/24/2014

© 2014 LifeSpan BioSciences