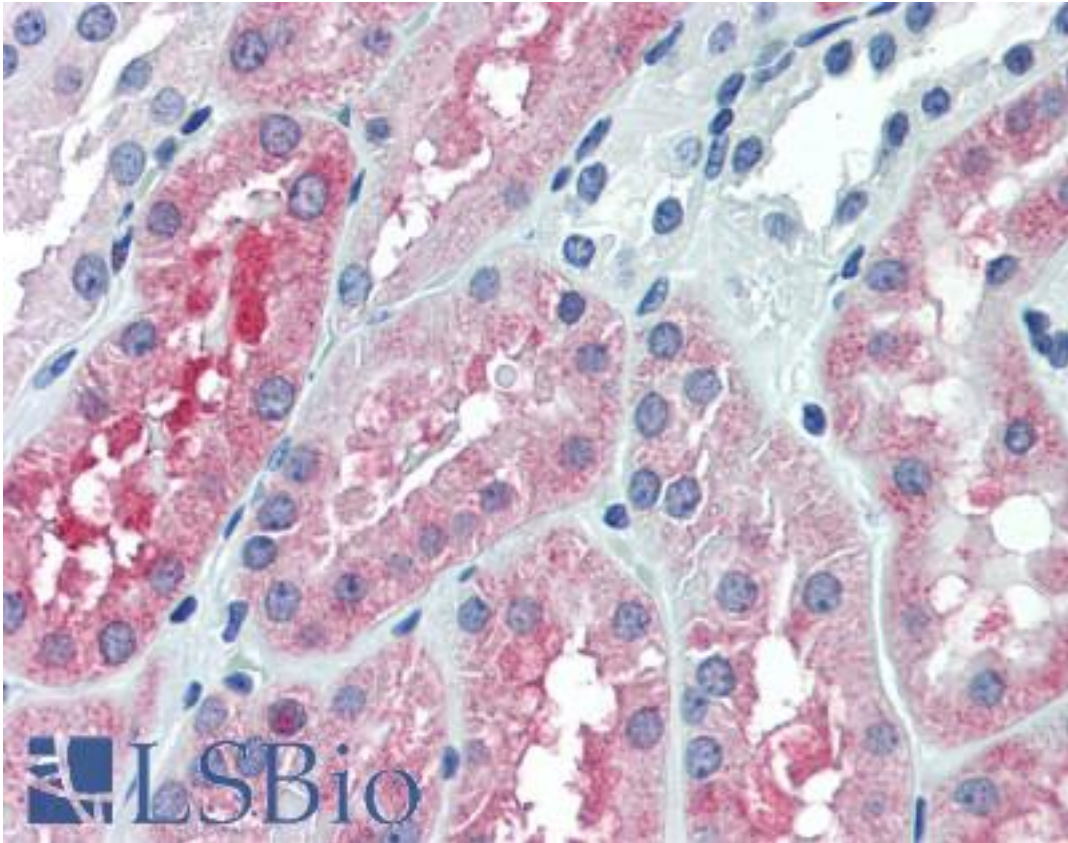


OCRL Mouse anti-Human Monoclonal (4A6) Antibody - LS-B6106 - LSBio

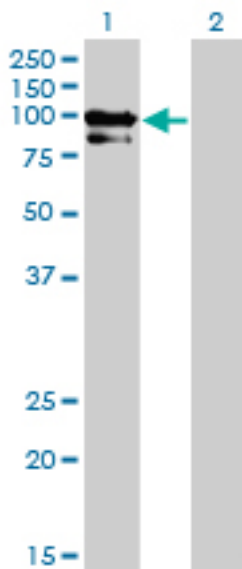
| | |
|-----------------------------|---|
| CatalogID: | LS-B6106 |
| Validation: | This antibody replaces catalog number LS-C133356. It has been validated for use in the following assays: IHC-P. |
| Target: | oculocerebrorenal syndrome of Lowe (OCRL) |
| Synonyms: | OCRL Antibody, NPHL2 Antibody, OCRL-1 Antibody, LOCR Antibody, OCRL1 Antibody |
| Family / Subfamily: | Inositol phosphatase / not assigned-Inositol phosphatase |
| Host | OCRL antibody was produced in Mouse |
| Clonality: | Monoclonal |
| Isotype: | IgG2a,k |
| Clone Name: | 4A6 |
| Immunogen Species: | OCRL antibody was raised against Human |
| Immunogen: | OCRL antibody was raised against oCRL (NP_000267, 146 a.a. ~ 240 a.a) partial recombinant protein with GST tag. MW of the GST tag alone is 26 KDa. |
| Specificity: | Human OCRL |
| Reactivity: | Human |
| Purification: | Protein A purified |
| Presentation: | PBS, pH 7.2. Sourced in Ascites. |
| Recommended Storage: | Store at -20°C or lower. Aliquot to avoid repeated freezing and thawing. |
| Usage Summary: | Immunohistochemistry: Formalin-fixed paraffin-embedded sections. RNAi Knockdown: Antibody validated. Sandwich ELISA: Recombinant protein. Western Blot using transfected cell lysates, cell line lysates and the recombinant protein used as the immunogen. |
| Uses: | IHC - Paraffin (5 µg/ml), Western blot (1:500 - 1:1000), ELISA (Optimal dilution to be determined by the researcher) |
| Size: | 50 µg |
| Concentration: | 0.5 mg/ml |

Immunohistochemistry Image:



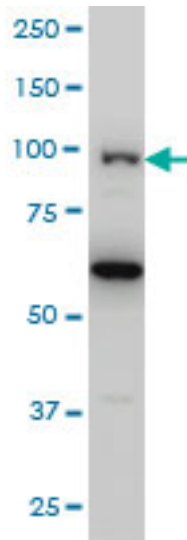
Anti-OCRL antibody IHC of human kidney. Immunohistochemistry of formalin-fixed, paraffin-embedded tissue after heat-induced antigen retrieval. Antibody LS-B6106 concentration 5 ug/ml.

Western Blot Image:



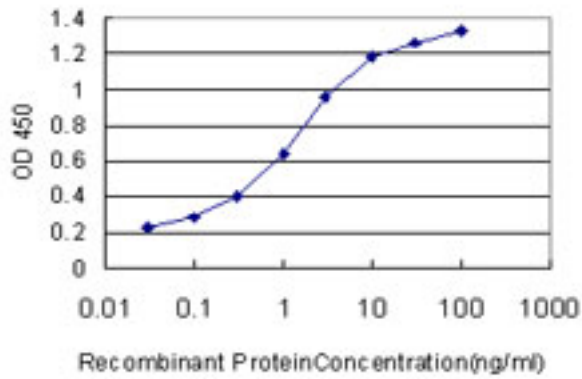
Western blot of OCRL expression in transfected 293T cell line by OCRL monoclonal antibody LS-B6106.

Western Blot Image:



OCRL monoclonal antibody LS-B6106, Western blot of OCRL expression in HeLa NE.

ELISA Image:



Detection limit for recombinant GST tagged OCRL is approximately 0.1 ng/ml as a capture antibody.

Requested From:

Japan

Laboratory Reagent For In Vitro Research Use Only

Not for resale without prior written consent from LifeSpan BioSciences, Inc.

Created on 9/24/2014

© 2014 LifeSpan BioSciences