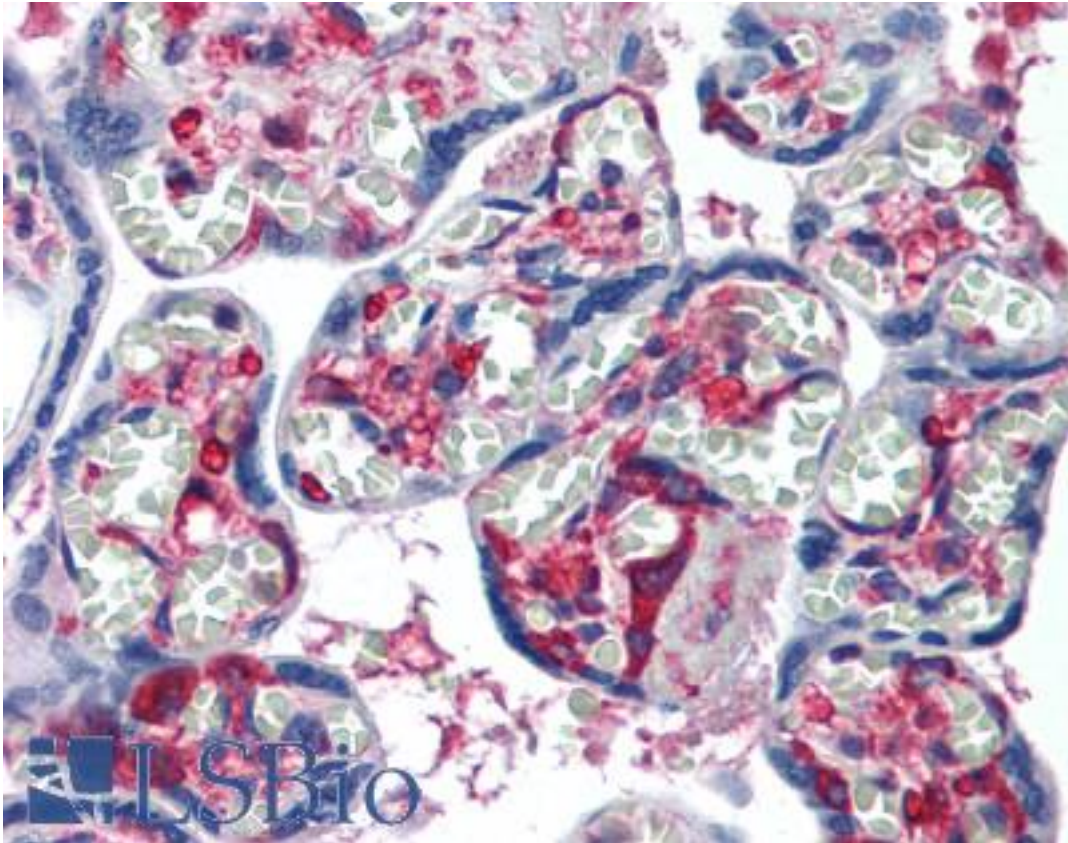


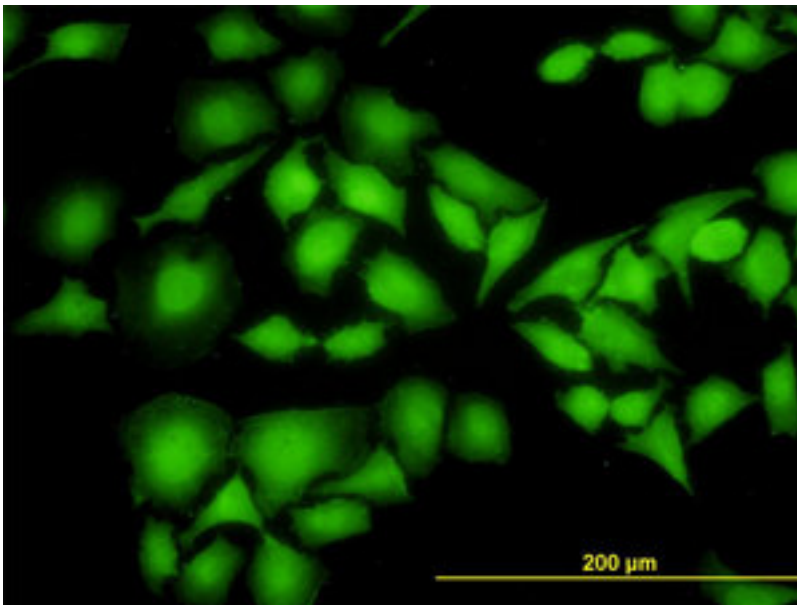
NME1 / NM23 Mouse anti-Human Monoclonal (1D7) Antibody - LS-B6104 - LSBio	
<b>CatalogID:</b>	LS-B6104
<b>Validation:</b>	This antibody replaces catalog number LS-C133348. It has been validated for use in the following assays: IHC-P.
<b>Target:</b>	NME/NM23 nucleoside diphosphate kinase 1 (NME1)
<b>Synonyms:</b>	NME1 Antibody, AWD Antibody, NDKA Antibody, NB Antibody, NDK A Antibody, NM23-H1 Antibody, NDP kinase A Antibody, NDPK-A Antibody, NDPKA Antibody, GAAD Antibody, Granzyme A-activated DNase Antibody, NBS Antibody, NM23 Antibody
<b>Host</b>	NME1 antibody was produced in Mouse
<b>Clonality:</b>	Monoclonal
<b>Isotype:</b>	IgG1,k
<b>Clone Name:</b>	1D7
<b>Immunogen Species:</b>	NME1 / NM23 antibody was raised against Human
<b>Immunogen:</b>	NME1 / NM23 antibody was raised against nME1 (NP_000260, 43 a.a. ~ 153 a.a) partial recombinant protein with GST tag. MW of the GST tag alone is 26 KDa.
<b>Specificity:</b>	Human NME1
<b>Reactivity:</b>	Human
<b>Purification:</b>	Protein A purified
<b>Presentation:</b>	PBS, pH 7.4. Sourced in Ascites.
<b>Recommended Storage:</b>	Store at -20°C or lower. Aliquot to avoid repeated freezing and thawing.
<b>Usage Summary:</b>	Immunohistochemistry: Formalin-fixed paraffin-embedded sections. Sandwich ELISA: Recombinant protein. Western Blot using transfected cell lysates, cell line lysates and the recombinant protein used as the immunogen..
<b>Uses:</b>	IHC - Paraffin (5 µg/ml), Immunofluorescence (10 µg/ml), Western blot (1:500 - 1:1000), Immunoprecipitation, ELISA (Optimal dilution to be determined by the researcher)
<b>Size:</b>	50 µg
<b>Concentration:</b>	0.5 mg/ml

**Immunohistochemistry Image:**



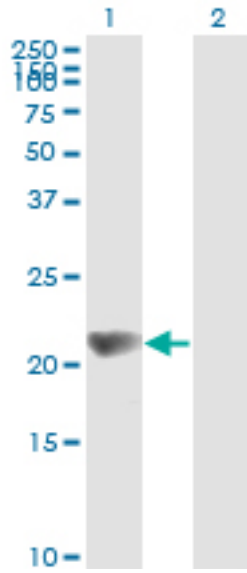
Anti-NME1 antibody IHC of human placenta. Immunohistochemistry of formalin-fixed, paraffin-embedded tissue after heat-induced antigen retrieval. Antibody LS-B6104 concentration 5 ug/ml.

**Immunofluorescence Image:**



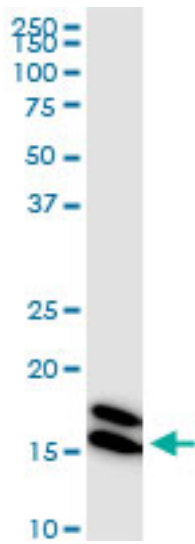
Immunofluorescence of monoclonal antibody to NME1 on HeLa cell. [antibody concentration 10 ug/ml]

**Western Blot Image:**



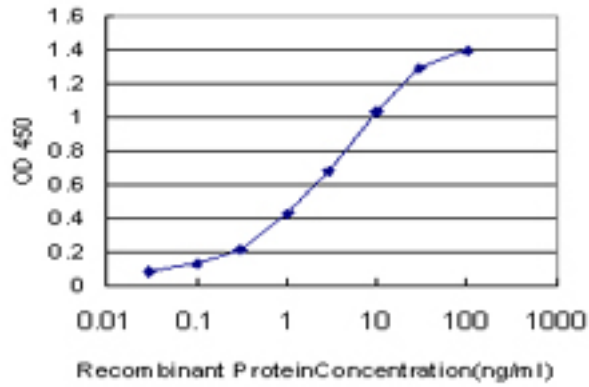
Western blot of NME1 expression in transfected 293T cell line by NME1 monoclonal antibody LS-B6104

**Western Blot Image:**



NME1 monoclonal antibody LS-B6104. Western blot of NME1 expression in HeLa.

**ELISA Image:**



Detection limit for recombinant GST tagged NME1 is approximately 0.1 ng/ml as a capture antibody.

**Requested From:**

Japan

Laboratory Reagent For In Vitro Research Use Only

Not for resale without prior written consent from LifeSpan BioSciences, Inc.

Created on 9/24/2014

© 2014 LifeSpan BioSciences