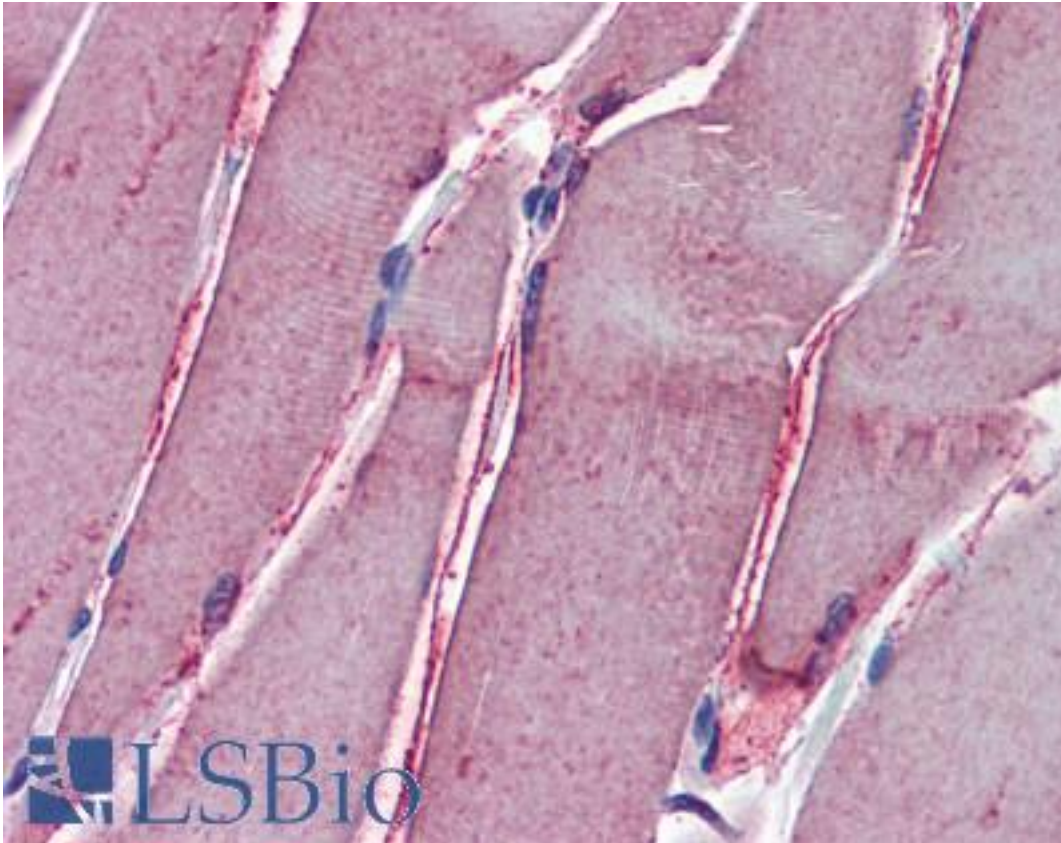


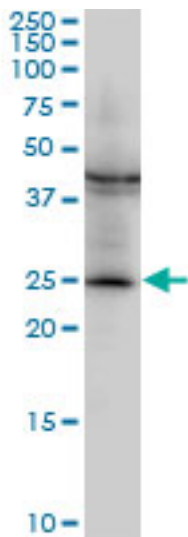
GSTM2 Mouse anti-Human Monoclonal (1E10) Antibody - LS-B6092 - LSBio	
CatalogID:	LS-B6092
Validation:	This antibody replaces catalog number LS-C133891. It has been validated for use in the following assays: IHC-P.
Target:	glutathione S-transferase mu 2 (muscle) (GSTM2)
Synonyms:	GSTM2 Antibody, GSTM Antibody, Glutathione S-transferase Mu 2 Antibody, GST class-mu 2 Antibody, GST, muscle Antibody, GST4 Antibody, GSTM2-2 Antibody, Glutathione S-transferase 4 Antibody, Glutathione S-transferase M1 Antibody, GTHMUS Antibody
Host	GSTM2 antibody was produced in Mouse
Clonality:	Monoclonal
Isotype:	IgG1,k
Clone Name:	1E10
Immunogen Species:	GSTM2 antibody was raised against Human
Immunogen:	GSTM2 antibody was raised against gGSTM2 (NP_000839, 90 a.a. ~ 190 a.a) partial recombinant protein with GST tag. MW of the GST tag alone is 26 KDa.
Specificity:	Human GSTM2
Reactivity:	Human, Mouse
Purification:	Protein A purified
Presentation:	PBS, pH 7.2. Sourced in Ascites.
Recommended Storage:	Aliquot and store at -20°C or -80°C. Avoid freeze-thaw cycles.
Usage Summary:	Immunohistochemistry: Formalin-fixed paraffin-embedded sections. Sandwich ELISA: Recombinant protein. Western Blot: Cell lysate, Recombinant protein.
Uses:	IHC - Paraffin (5 µg/ml), Western blot (1:500 - 1:1000), ELISA (Optimal dilution to be determined by the researcher)
Size:	50 µg
Concentration:	0.5 mg/ml

Immunohistochemistry Image:



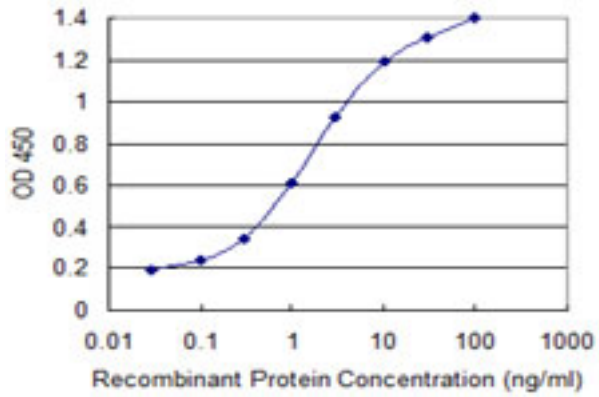
Anti-GSTM2 antibody IHC of human skeletal muscle. Immunohistochemistry of formalin-fixed, paraffin-embedded tissue after heat-induced antigen retrieval. Antibody LS-B6092 concentration 5 ug/ml.

Western Blot Image:



Western blot of GSTM2 expression in NIH/3T3 cell lysate.

ELISA Image:



Detection limit for recombinant GST tagged GSTM2 is 0.03 ng/ml as a capture antibody.

Requested From:

Japan

Laboratory Reagent For In Vitro Research Use Only

Not for resale without prior written consent from LifeSpan BioSciences, Inc.

Created on 9/24/2014

© 2014 LifeSpan BioSciences