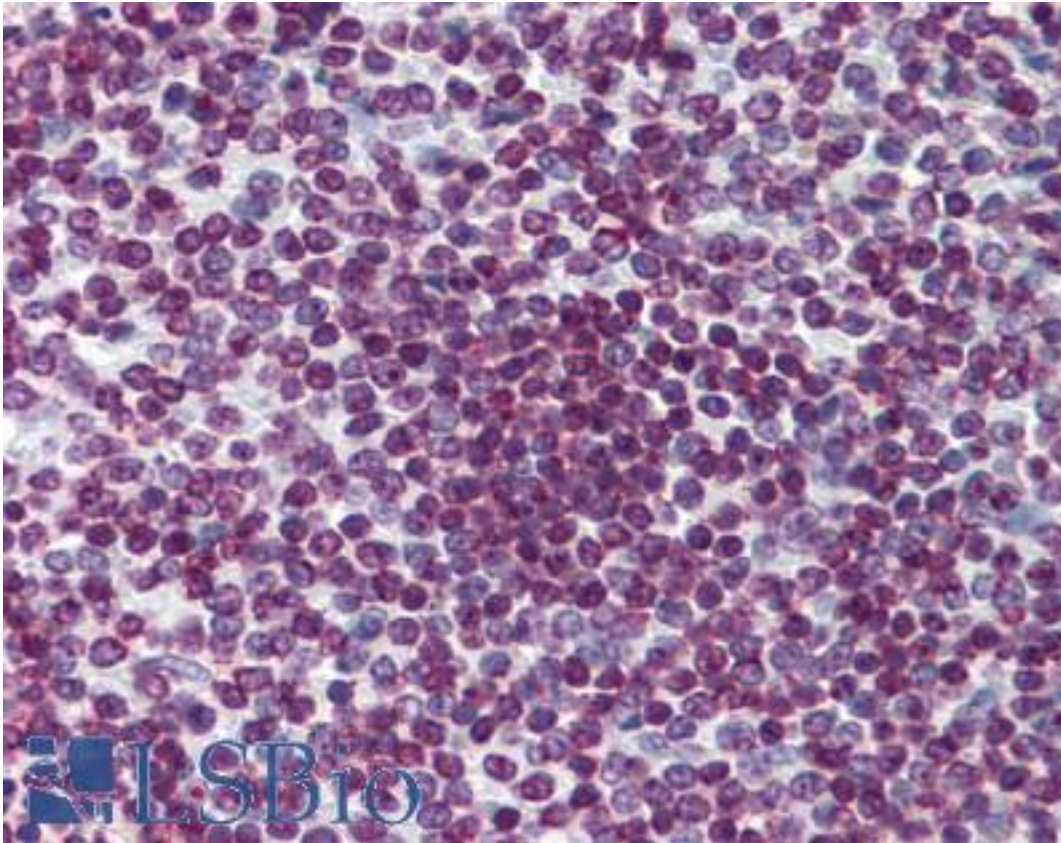


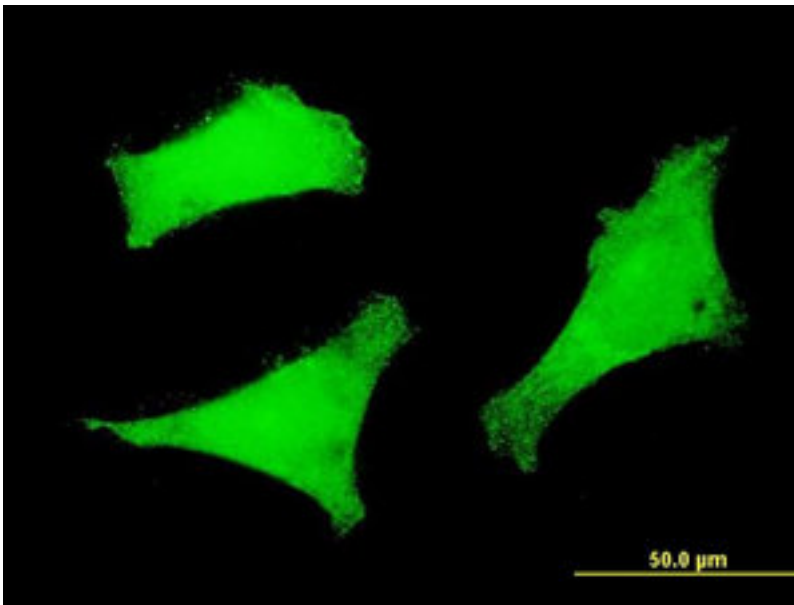
FOXO3 / FOXO3A Mouse anti-Human Monoclonal (4F2) Antibody - LS-B6087 - LSBio	
<b>CatalogID:</b>	LS-B6087
<b>Validation:</b>	This antibody replaces catalog number LS-C133205. It has been validated for use in the following assays: IHC-P.
<b>Target:</b>	forkhead box O3 (FOXO3)
<b>Synonyms:</b>	FOXO3 Antibody, AF6q21 Antibody, AF6q21 protein Antibody, Forkhead box O3 Antibody, Forkhead box O3A Antibody, FOXO3A Antibody, FKHRL1P2 Antibody, Forkhead box protein O3 Antibody, FOXO2 Antibody, FKHRL1 Antibody
<b>Family / Subfamily:</b>	Transcription factor / not assigned-Transcription factor
<b>Host</b>	FOXO3 antibody was produced in Mouse
<b>Clonality:</b>	Monoclonal
<b>Isotype:</b>	IgG2a,k
<b>Clone Name:</b>	4F2
<b>Immunogen Species:</b>	FOXO3 / FOXO3A antibody was raised against Human
<b>Immunogen:</b>	FOXO3 / FOXO3A antibody was raised against FOXO3A (AAH21224, 361 a.a. ~ 460 a.a) partial recombinant protein with GST tag. MW of the GST tag alone is 26 KDa.
<b>Specificity:</b>	Human FOXO3
<b>Reactivity:</b>	Human
<b>Purification:</b>	Protein A purified
<b>Presentation:</b>	PBS, pH 7.2
<b>Recommended Storage:</b>	Aliquot and store at -20°C or -80°C. Avoid freeze-thaw cycles.
<b>Usage Summary:</b>	Immunohistochemistry: Formalin-fixed paraffin-embedded sections. Sandwich ELISA: Recombinant protein. Western Blot: Recombinant protein.
<b>Uses:</b>	IHC - Paraffin (5 µg/ml), Immunofluorescence (10 µg/ml), Western blot (1:500 - 1:1000), ELISA (Optimal dilution to be determined by the researcher)
<b>Size:</b>	50 µg
<b>Concentration:</b>	0.5 mg/ml

**Immunohistochemistry Image:**



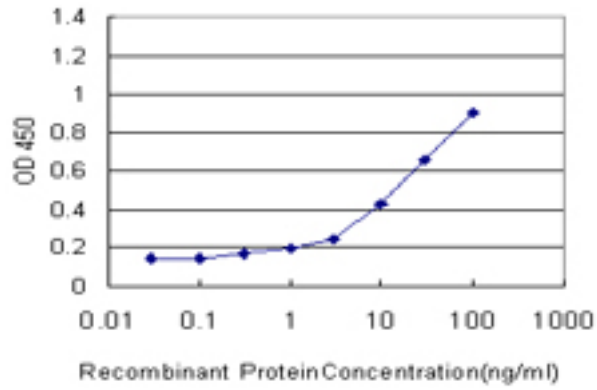
Anti-FOXO3A antibody IHC of human spleen. Immunohistochemistry of formalin-fixed, paraffin-embedded tissue after heat-induced antigen retrieval. Antibody LS-B6087 concentration 5 ug/ml.

**Immunofluorescence Image:**



Immunofluorescence of monoclonal antibody to FOXO3 on HeLa cell. [antibody concentration 10 ug/ml].

**ELISA Image:**



Detection limit for recombinant GST tagged FOXO3A is approximately 1 ng/ml as a capture antibody.

**Requested From:**

Japan

Laboratory Reagent For In Vitro Research Use Only

Not for resale without prior written consent from LifeSpan BioSciences, Inc.

Created on 9/24/2014

© 2014 LifeSpan BioSciences