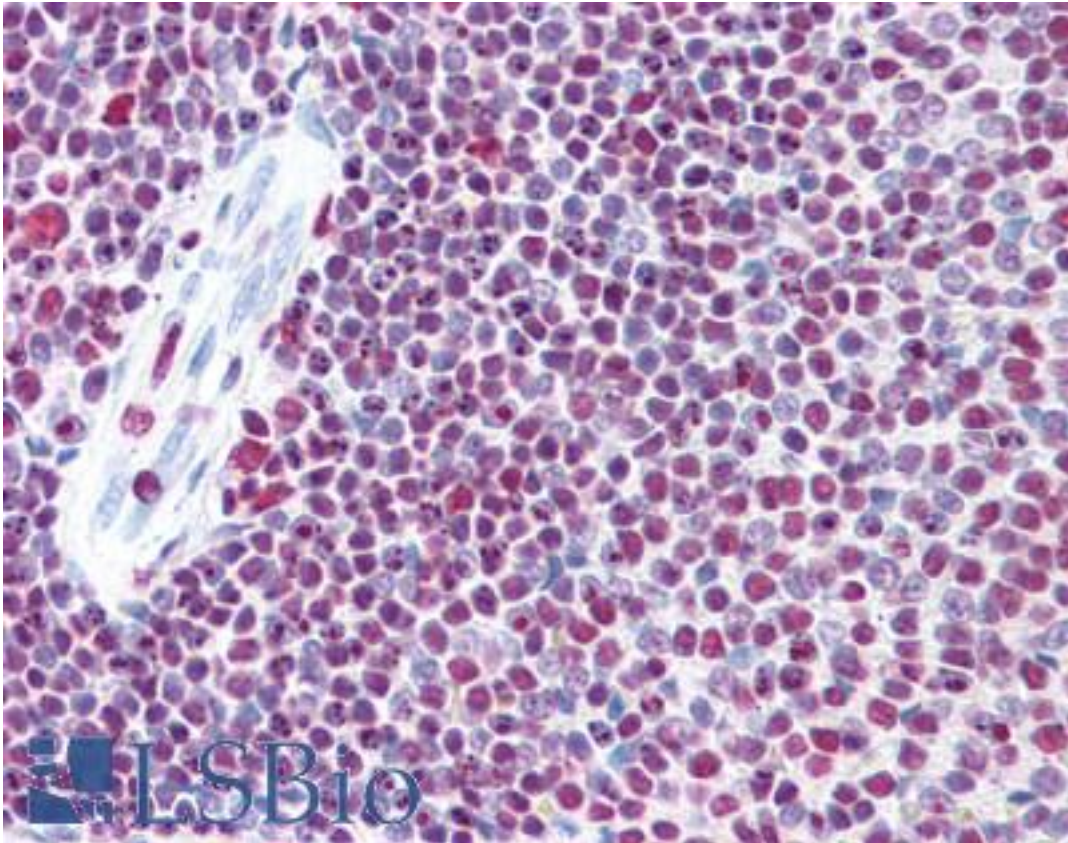


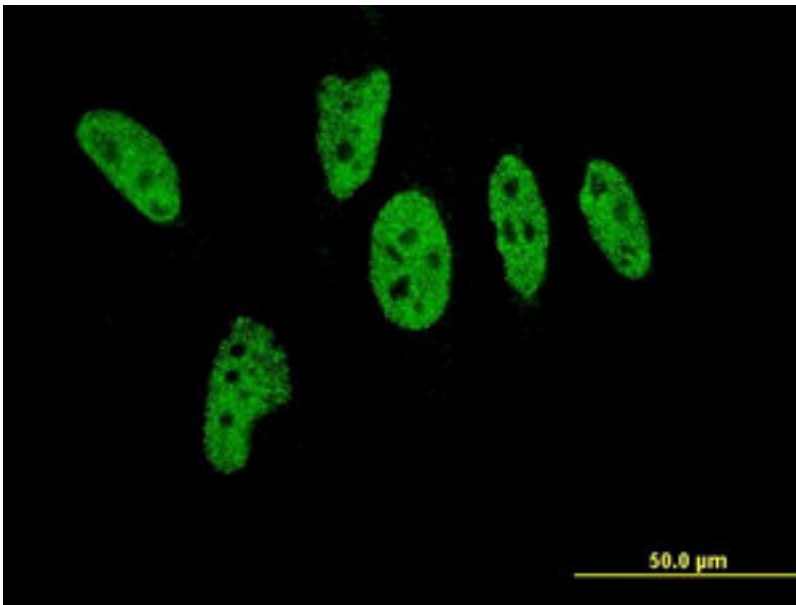
EP300 / p300 Mouse anti-Human Monoclonal (1B1) Antibody - LS-B6080 - LSBio	
<b>CatalogID:</b>	LS-B6080
<b>Validation:</b>	This antibody replaces catalog number LS-C133172. It has been validated for use in the following assays: IHC-P.
<b>Target:</b>	E1A binding protein p300 (EP300)
<b>Synonyms:</b>	EP300 Antibody, E1A binding protein p300 Antibody, Histone acetyltransferase p300 Antibody, KAT3B Antibody, p300 HAT Antibody, E1A-associated protein p300 Antibody, E1A-binding protein, 300kD Antibody, p300 Antibody, RSTS2 Antibody
<b>Host</b>	EP300 antibody was produced in Mouse
<b>Clonality:</b>	Monoclonal
<b>Isotype:</b>	IgG1
<b>Clone Name:</b>	1B1
<b>Immunogen Species:</b>	EP300 / p300 antibody was raised against Human
<b>Immunogen:</b>	EP300 / p300 antibody was raised against eP300 (NP_001420, 731 a.a. ~ 831 a.a) partial recombinant protein with GST tag. MW of the GST tag alone is 26 KDa.
<b>Specificity:</b>	Human p300
<b>Reactivity:</b>	Human
<b>Purification:</b>	Protein A purified
<b>Presentation:</b>	PBS, pH 7.2
<b>Recommended Storage:</b>	Aliquot and store at -20°C or -80°C. Avoid freeze-thaw cycles.
<b>Usage Summary:</b>	Immunohistochemistry: Formalin-fixed paraffin-embedded sections. Western Blot: Recombinant protein.
<b>Uses:</b>	IHC - Paraffin (5 µg/ml), Immunofluorescence (10 µg/ml), Western blot (1:500 - 1:1000), ELISA (Optimal dilution to be determined by the researcher)
<b>Size:</b>	50 µg
<b>Concentration:</b>	0.5 mg/ml

**Immunohistochemistry Image:**



Anti-EP300 / p300 antibody IHC of human spleen. Immunohistochemistry of formalin-fixed, paraffin-embedded tissue after heat-induced antigen retrieval. Antibody LS-B6080 concentration 5 ug/ml.

**Immunofluorescence Image:**



Immunofluorescence of monoclonal antibody to EP300 on HeLa cell. [antibody concentration 10 ug/ml].

<b>Requested From:</b>	Japan
Laboratory Reagent For In Vitro Research Use Only	
Not for resale without prior written consent from LifeSpan BioSciences, Inc.	
Created on 9/24/2014	
© 2014 LifeSpan BioSciences	