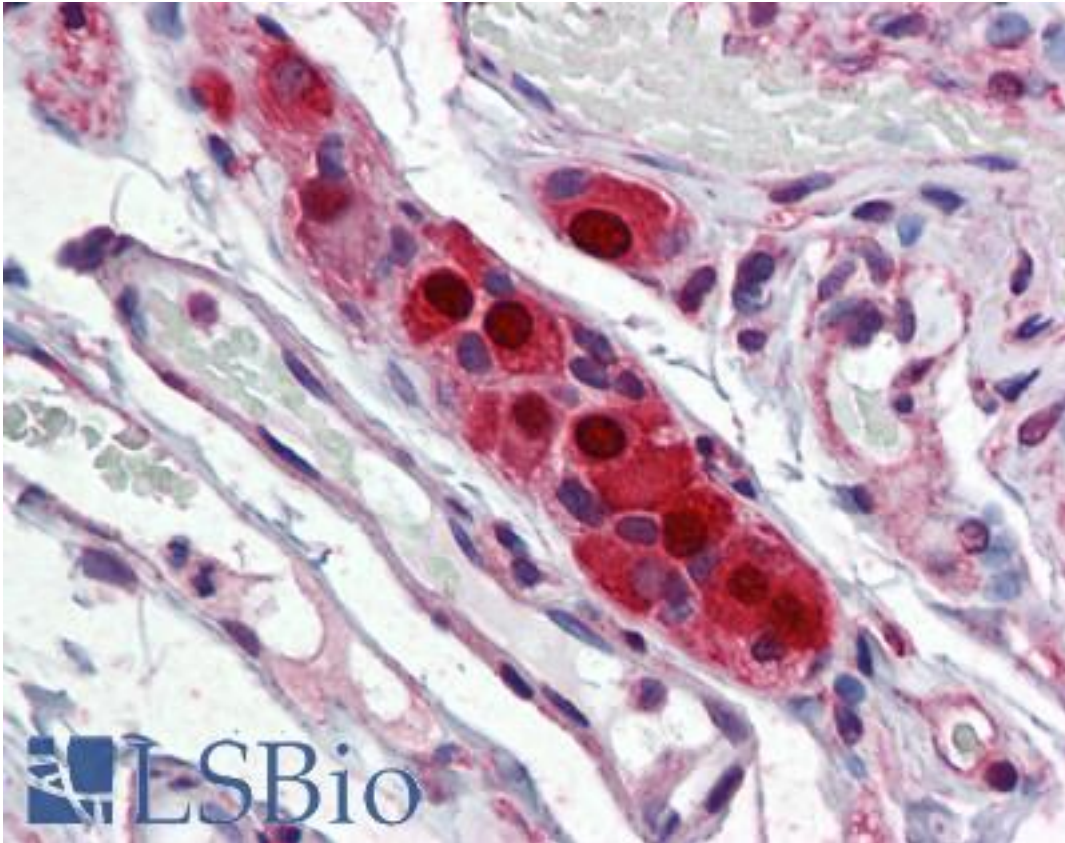


ELAVL4 / HuD Mouse anti-Human Monoclonal (6B9) Antibody - LS-B6079 - LSBio

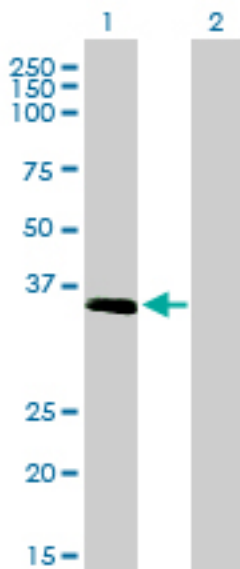
CatalogID:	LS-B6079
Validation:	This antibody replaces catalog number LS-C133166. It has been validated for use in the following assays: IHC-P.
Target:	ELAV like neuron-specific RNA binding protein 4 (ELAVL4)
Synonyms:	ELAVL4 Antibody, ELAV-like protein 4 Antibody, Hu antigen D Antibody, HUD Antibody, PNEM Antibody, Hu-antigen D Antibody
Host	ELAVL4 antibody was produced in Mouse
Clonality:	Monoclonal
Isotype:	IgG1,k
Clone Name:	6B9
Immunogen Species:	ELAVL4 / HuD antibody was raised against Human
Immunogen:	ELAVL4 / HuD antibody was raised against eLAVL4 (NP_068771, 312 a.a. ~ 381 a.a) partial recombinant protein with GST tag. MW of the GST tag alone is 26 KDa.
Specificity:	Human ELAVL4
Reactivity:	Human, Rat
Purification:	Protein A purified
Presentation:	PBS, pH 7.2. Sourced in Ascites.
Recommended Storage:	Aliquot and store at -20°C or -80°C. Avoid freeze-thaw cycles.
Usage Summary:	Immunohistochemistry: Formalin-fixed paraffin-embedded sections. RNAi Knockdown: Antibody validated. Sandwich ELISA: Recombinant protein. Western Blot: Cell lysate, Cell lysate, Transfected lysate, Recombinant protein.
Uses:	IHC - Paraffin (5 µg/ml), Western blot (1:500 - 1:1000), ELISA (Optimal dilution to be determined by the researcher)
Size:	50 µg
Concentration:	1 mg/ml

Immunohistochemistry Image:



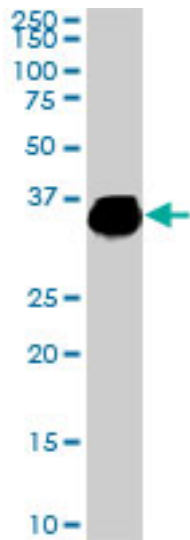
Anti-ELAVL4 / HuD antibody IHC of human small intestine, submucosal plexus.
Immunohistochemistry of formalin-fixed, paraffin-embedded tissue after heat-induced antigen retrieval. Antibody LS-B6079 concentration 5 ug/ml.

Western Blot Image:



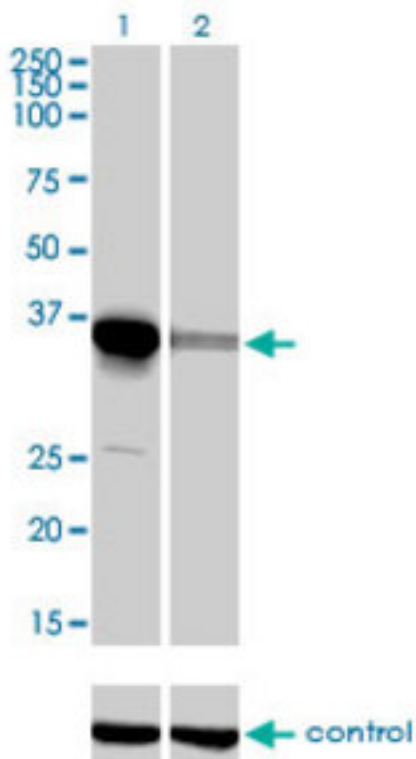
Western blot of ELAVL4 expression in transfected 293T cell line by ELAVL4 antibody.

Western Blot Image:



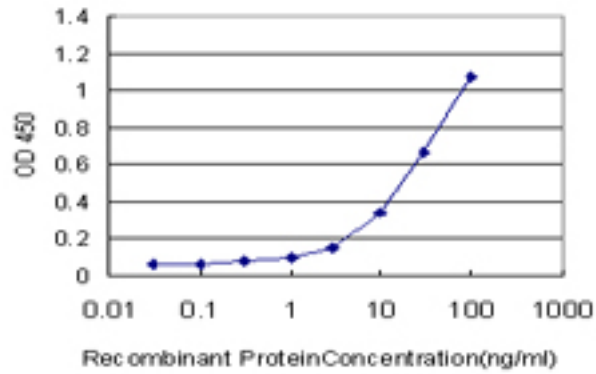
Western blot of ELAVL4 expression in PC-12 cell lysate.

RNA interference Image:



Western blot of ELAVL4 over-expressed 293 cell line, cotransfected with ELAVL4 Validated Chimera RNAi (Lane 2) or non-transfected control (Lane 1). Blot probed with ELAVL4 monoclonal antibody. GAPDH (36.1 kD) used as control.

ELISA Image:



Detection limit for recombinant GST tagged ELAVL4 is approximately 1 ng/ml as a capture antibody.

Requested From:

Japan

Laboratory Reagent For In Vitro Research Use Only

Not for resale without prior written consent from LifeSpan BioSciences, Inc.

Created on 9/24/2014

© 2014 LifeSpan BioSciences