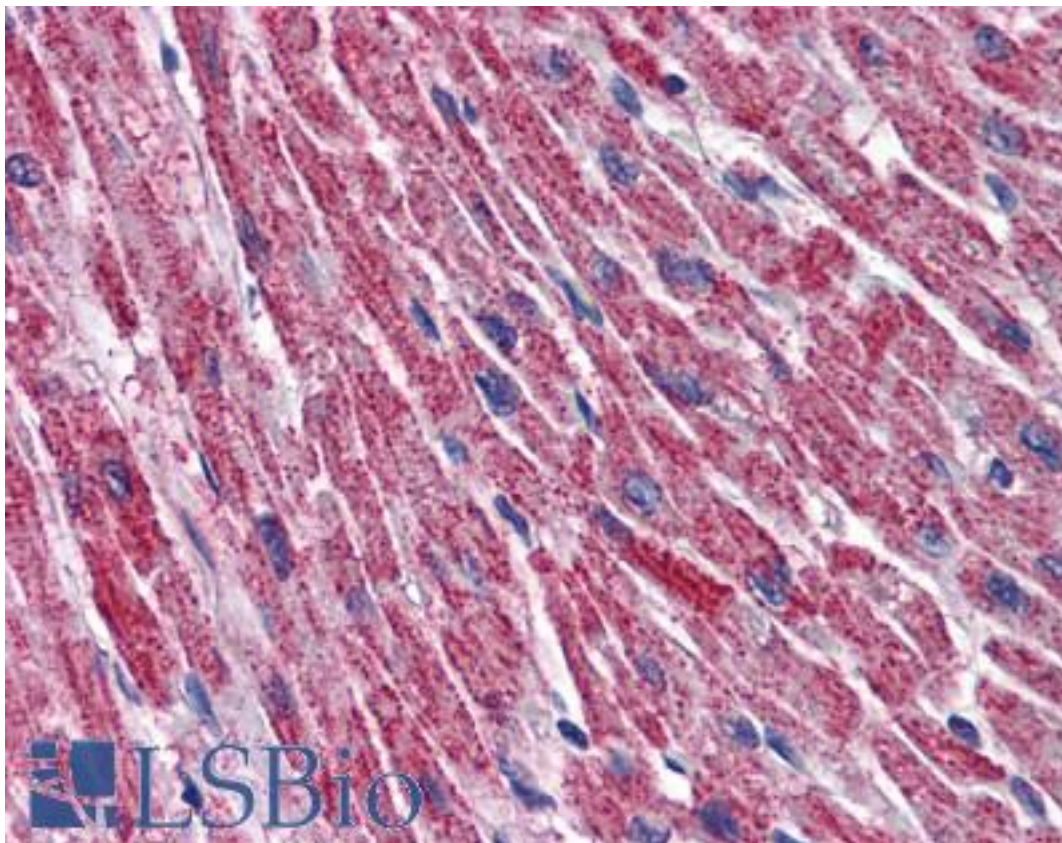


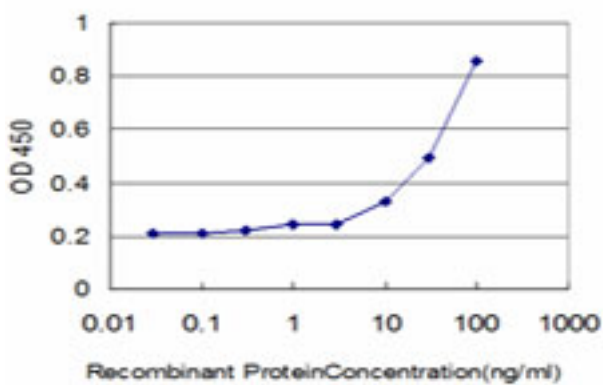
DLD / Diaphorase / E3 Mouse anti-Human Monoclonal (2D4) Antibody - LS-B6078 - LSBio	
<b>CatalogID:</b>	LS-B6078
<b>Validation:</b>	This antibody replaces catalog number LS-C133155. It has been validated for use in the following assays: IHC-P.
<b>Target:</b>	dihydrolipoamide dehydrogenase (DLD)
<b>Synonyms:</b>	DLD Antibody, Diaphorase Antibody, DLDH Antibody, Dihydrolipoamide dehydrogenase Antibody, E3 Antibody, GCSL Antibody, Lipoyl dehydrogenase Antibody, PHE3 Antibody, Lipoamide dehydrogenase Antibody, Lipoamide reductase Antibody, LAD Antibody
<b>Host</b>	DLD antibody was produced in Mouse
<b>Clonality:</b>	Monoclonal
<b>Isotype:</b>	IgG3,k
<b>Clone Name:</b>	2D4
<b>Immunogen Species:</b>	DLD / Diaphorase / E3 antibody was raised against Human
<b>Immunogen:</b>	DLD / Diaphorase / E3 antibody was raised against dLD (AAH18696, 1 a.a. ~ 510 a.a) full length recombinant protein with GST tag. MW of the GST tag alone is 26 KDa.
<b>Specificity:</b>	Human DLD
<b>Reactivity:</b>	Human
<b>Purification:</b>	Protein A purified
<b>Presentation:</b>	PBS, pH 7.2. Sourced in Ascites.
<b>Recommended Storage:</b>	Aliquot and store at -20°C or -80°C. Avoid freeze-thaw cycles.
<b>Usage Summary:</b>	Immunohistochemistry: Formalin-fixed paraffin-embedded sections. Sandwich ELISA: Recombinant protein. Western Blot: Recombinant protein.
<b>Uses:</b>	IHC - Paraffin (5 µg/ml), Western blot (1:500 - 1:1000), ELISA (Optimal dilution to be determined by the researcher)
<b>Size:</b>	50 µg
<b>Concentration:</b>	0.2 mg/ml

**Immunohistochemistry Image:**



Anti-DLD / DLDH antibody IHC of human heart. Immunohistochemistry of formalin-fixed, paraffin-embedded tissue after heat-induced antigen retrieval. Antibody LS-B6078 concentration 5 ug/ml.

**ELISA Image:**



Detection limit for recombinant GST tagged DLD is approximately 1 ng/ml as a capture antibody.

**Requested From:**

Japan

Laboratory Reagent For In Vitro Research Use Only

Not for resale without prior written consent from LifeSpan BioSciences, Inc.

Created on 9/24/2014

© 2014 LifeSpan BioSciences