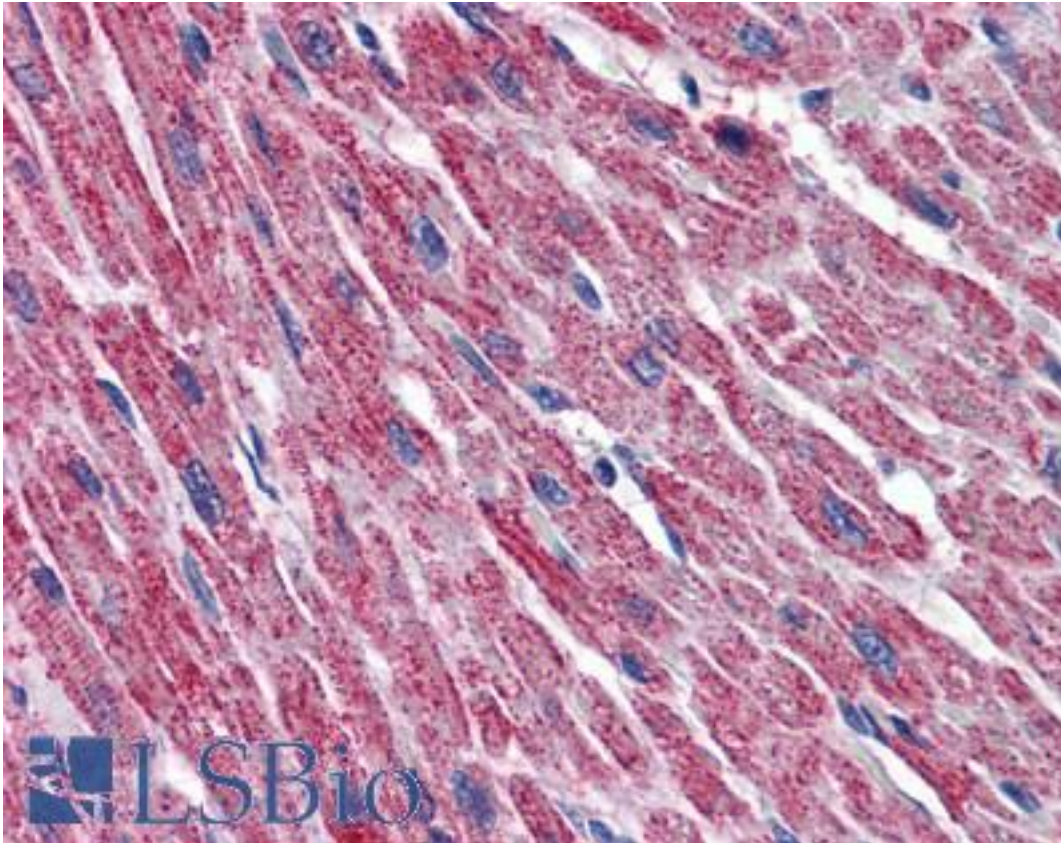


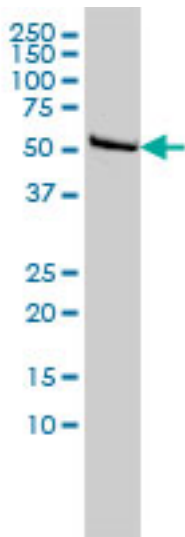
DLD / Diaphorase / E3 Mouse anti-Human Monoclonal (3C1) Antibody - LS-B6076 - LSBio	
CatalogID:	LS-B6076
Validation:	This antibody replaces catalog number LS-C133153. It has been validated for use in the following assays: IHC-P.
Target:	dihydrolipoamide dehydrogenase (DLD)
Synonyms:	DLD Antibody, Diaphorase Antibody, DLDH Antibody, Dihydrolipoamide dehydrogenase Antibody, E3 Antibody, GCSL Antibody, Lipoyl dehydrogenase Antibody, PHE3 Antibody, Lipoamide dehydrogenase Antibody, Lipoamide reductase Antibody, LAD Antibody
Host	DLD antibody was produced in Mouse
Clonality:	Monoclonal
Isotype:	IgG3,k
Clone Name:	3C1
Immunogen Species:	DLD / Diaphorase / E3 antibody was raised against Human
Immunogen:	DLD / Diaphorase / E3 antibody was raised against dLD (AAH18696, 1 a.a. ~ 510 a.a) full length recombinant protein with GST tag. MW of the GST tag alone is 26 KDa.
Specificity:	Human DLD
Reactivity:	Human
Purification:	Protein A purified
Presentation:	PBS, pH 7.2
Recommended Storage:	Aliquot and store at -20°C or -80°C. Avoid freeze-thaw cycles.
Usage Summary:	Immunohistochemistry: Formalin-fixed paraffin-embedded sections. Sandwich ELISA: Recombinant protein. Western Blot: Cell lysate, Recombinant protein.
Uses:	IHC - Paraffin (5 µg/ml), Western blot (1:500 - 1:1000), ELISA (Optimal dilution to be determined by the researcher)
Size:	50 µg
Concentration:	0.2 mg/ml

Immunohistochemistry Image:



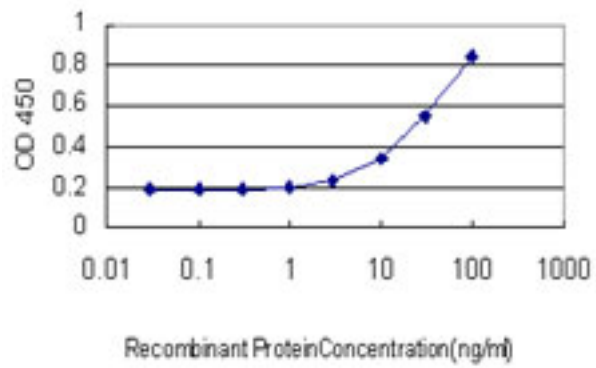
Anti-DLD / DLDH antibody IHC of human heart. Immunohistochemistry of formalin-fixed, paraffin-embedded tissue after heat-induced antigen retrieval. Antibody LS-B6076 concentration 5 ug/ml.

Western Blot Image:



Western blot of DLD expression in HeLa cell lysate.

ELISA Image:



Detection limit for recombinant GST tagged DLD is approximately 1 ng/ml as a capture antibody.

Requested From:

Japan

Laboratory Reagent For In Vitro Research Use Only

Not for resale without prior written consent from LifeSpan BioSciences, Inc.

Created on 9/24/2014

© 2014 LifeSpan BioSciences