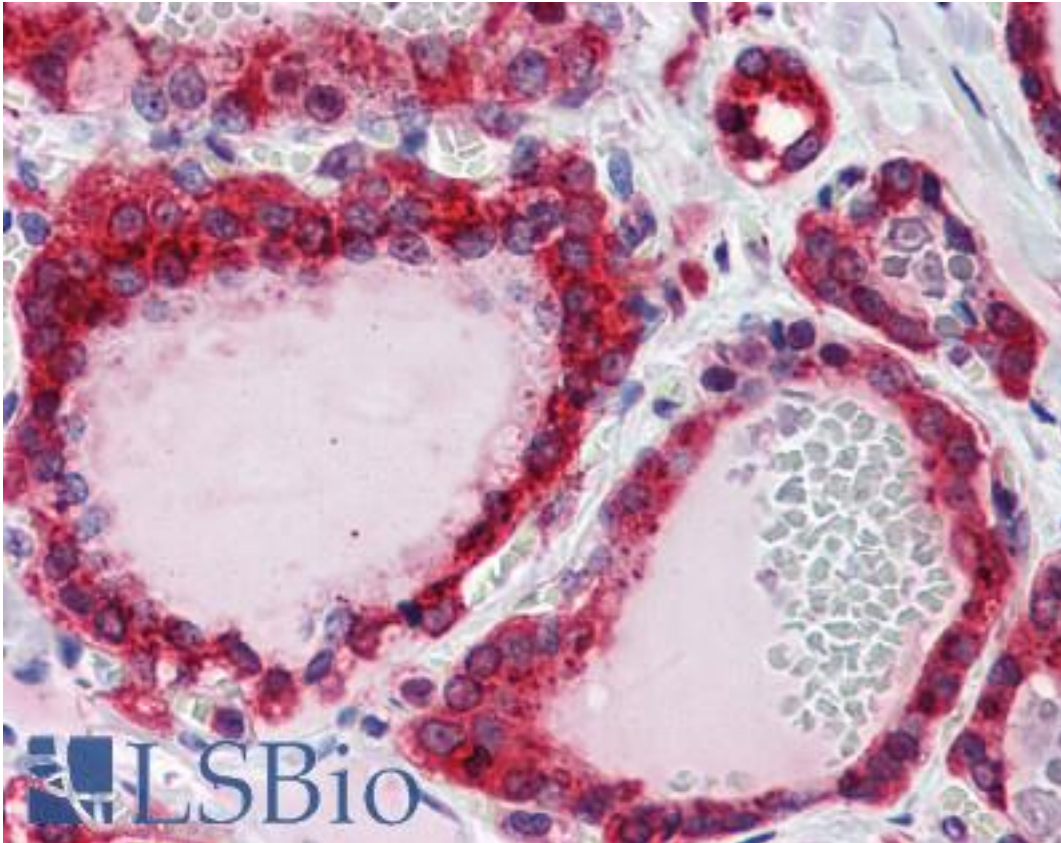


**CTSD / Cathepsin D Mouse anti-Human Monoclonal (3F12-1B9) Antibody - LS-B6075 - LSBio**

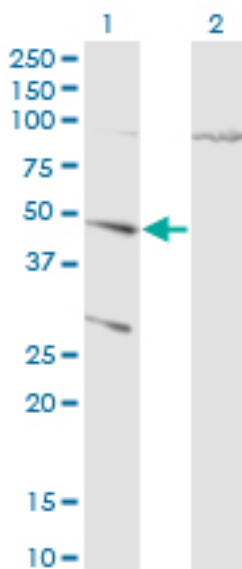
<b>CatalogID:</b>	LS-B6075
<b>Validation:</b>	This antibody replaces catalog number LS-C133146. It has been validated for use in the following assays: IHC-P.
<b>Target:</b>	cathepsin D (CTSD)
<b>Synonyms:</b>	CTSD Antibody, CPSD Antibody, CLN10 Antibody, Lysosomal aspartyl peptidase Antibody, Lysosomal aspartyl protease Antibody, ProCathepsin D Antibody, CatD Antibody, Cathepsin D Antibody
<b>Family / Subfamily:</b>	Protease / Aspartic A1
<b>Host</b>	CTSD antibody was produced in Mouse
<b>Clonality:</b>	Monoclonal
<b>Isotype:</b>	IgG1,k
<b>Clone Name:</b>	3F12-1B9
<b>Immunogen Species:</b>	CTSD / Cathepsin D antibody was raised against Human
<b>Immunogen:</b>	CTSD / Cathepsin D antibody was raised against cTSD (AAH16320, 26 a.a. ~ 412 a.a) full length recombinant protein with GST tag. MW of the GST tag alone is 26 KDa.
<b>Specificity:</b>	Human Cathepsin D
<b>Reactivity:</b>	Human
<b>Purification:</b>	Protein A purified
<b>Presentation:</b>	PBS, pH 7.2. Sourced in Ascites.
<b>Recommended Storage:</b>	Aliquot and store at -20°C or -80°C. Avoid freeze-thaw cycles.
<b>Usage Summary:</b>	Immunohistochemistry: Formalin-fixed paraffin-embedded sections. Sandwich ELISA: Recombinant protein. Western Blot: Transfected lysate, Recombinant protein.
<b>Uses:</b>	IHC - Paraffin (5 µg/ml), Western blot (1:500 - 1:1000), Immunoprecipitation, ELISA (Optimal dilution to be determined by the researcher)
<b>Size:</b>	50 µg
<b>Concentration:</b>	0.45 mg/ml

**Immunohistochemistry Image:**



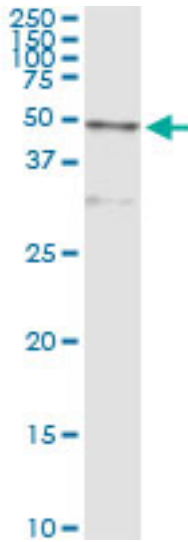
Anti-Cathepsin D antibody IHC of human thyroid. Immunohistochemistry of formalin-fixed, paraffin-embedded tissue after heat-induced antigen retrieval. Antibody LS-B6075 concentration 5 ug/ml.

**Western Blot Image:**



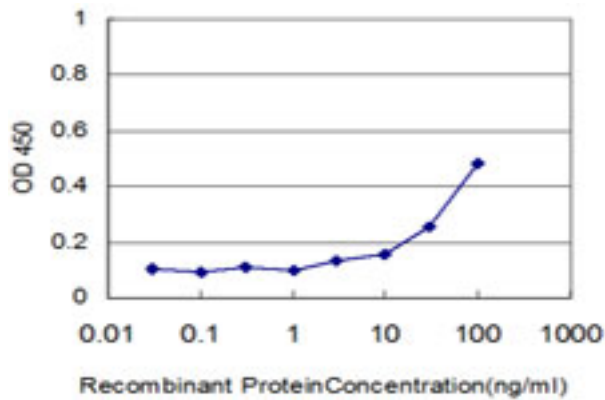
Western blot of CTSD expression in transfected 293T cell line by CTSD antibody. Lane 1: CTSD transfected lysate (Predicted MW: 44.6 KDa). Lane 2: Non-transfected lysate.

**Immunoprecipitation Image:**



Immunoprecipitation of CTSD transfected lysate using anti-CTSD monoclonal antibody and Protein A Magnetic Bead.

**ELISA Image:**



Detection limit for recombinant GST tagged CTSD is approximately 3 ng/ml as a capture antibody.

**Requested From:**

Japan

Laboratory Reagent For In Vitro Research Use Only

Not for resale without prior written consent from LifeSpan BioSciences, Inc.

Created on 9/24/2014

© 2014 LifeSpan BioSciences