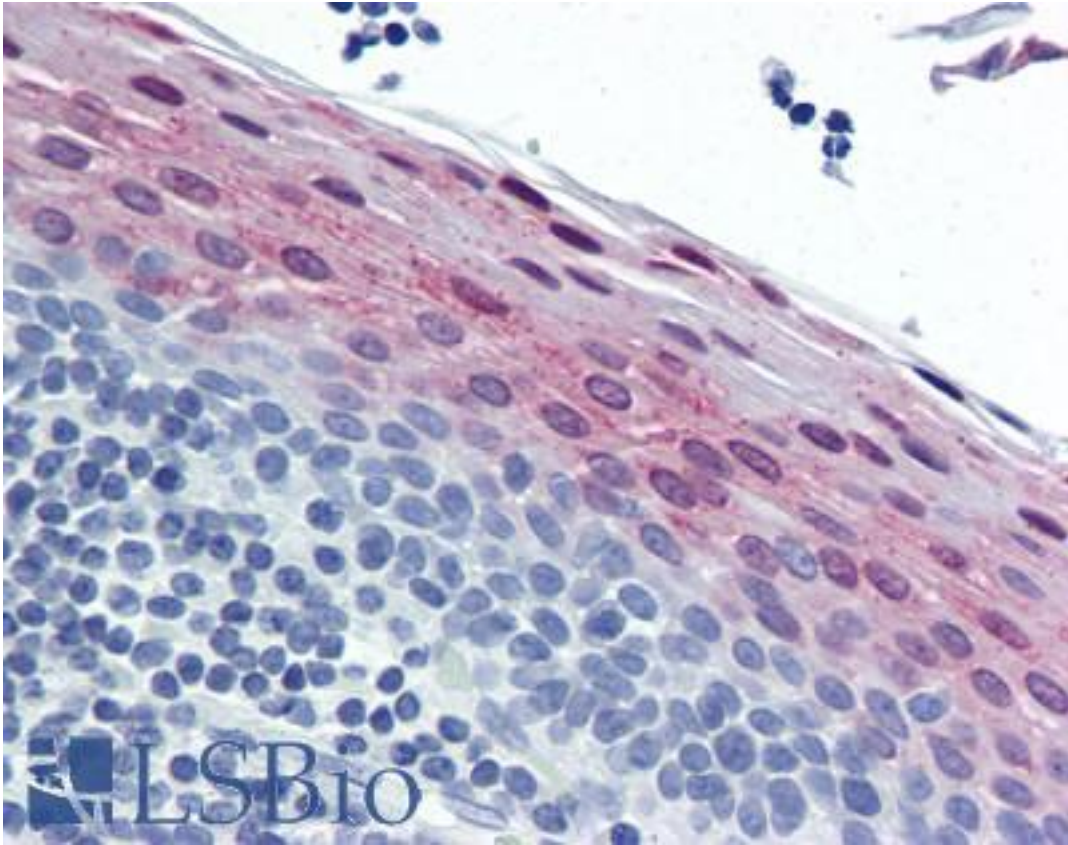


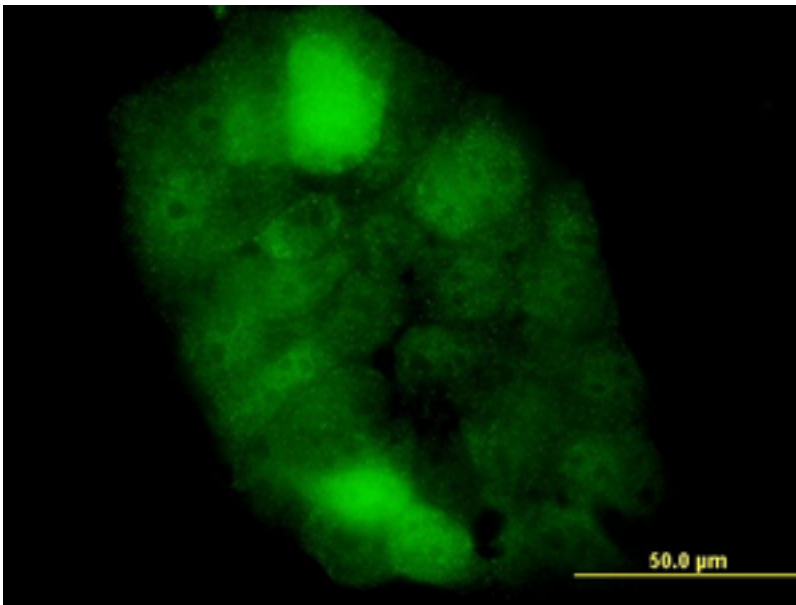
CSTB / Cystatin B / Stefin B Mouse anti-Human Monoclonal (M2F1) Antibody - LS-B6074 - LSBio	
<b>CatalogID:</b>	LS-B6074
<b>Validation:</b>	This antibody replaces catalog number LS-C133140. It has been validated for use in the following assays: IHC-P.
<b>Target:</b>	cystatin B (stefin B) (CSTB)
<b>Synonyms:</b>	CSTB Antibody, CPI-B Antibody, EPM1 Antibody, EPM1A Antibody, PME Antibody, Stefin B Antibody, Stefin-B Antibody, ULD Antibody, Cystatin b Antibody, Cystatin B (stefin B) Antibody, Cystatin-B Antibody, STFB Antibody
<b>Host</b>	CSTB antibody was produced in Mouse
<b>Clonality:</b>	Monoclonal
<b>Isotype:</b>	IgG1,k
<b>Clone Name:</b>	M2F1
<b>Immunogen Species:</b>	CSTB / Cystatin B / Stefin B antibody was raised against Human
<b>Immunogen:</b>	CSTB / Cystatin B / Stefin B antibody was raised against cSTB (AAH03370.1, 1 a.a. ~ 98 a.a) full length recombinant protein with GST tag. MW of the GST tag alone is 26 KDa.
<b>Specificity:</b>	Human Cystatin B
<b>Reactivity:</b>	Human
<b>Purification:</b>	Protein A purified
<b>Presentation:</b>	PBS, pH 7.2. Sourced in Ascites.
<b>Recommended Storage:</b>	Aliquot and store at -20°C or -80°C. Avoid freeze-thaw cycles.
<b>Usage Summary:</b>	Immunohistochemistry: Formalin-fixed paraffin-embedded sections. Sandwich ELISA: Recombinant protein. Western Blot: Cell lysate, Transfected lysate, Recombinant protein.
<b>Uses:</b>	IHC - Paraffin (5 µg/ml), Immunofluorescence (10 µg/ml), Western blot (1:500 - 1:1000), ELISA (Optimal dilution to be determined by the researcher)
<b>Size:</b>	50 µg
<b>Concentration:</b>	0.5 mg/ml

**Immunohistochemistry Image:**



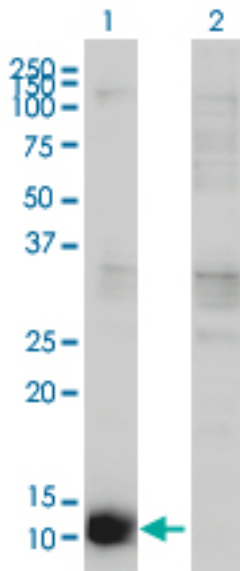
Anti-CSTB / Stefin B antibody IHC of human tonsil. Immunohistochemistry of formalin-fixed, paraffin-embedded tissue after heat-induced antigen retrieval. Antibody LS-B6074 concentration 5 ug/ml.

**Immunofluorescence Image:**



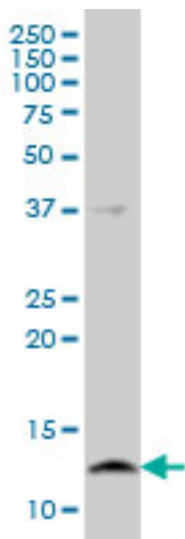
Immunofluorescence of monoclonal antibody to CSTB on A-431 cell. [antibody concentration 10 ug/ml]

**Western Blot Image:**



Western blot of CSTB expression in transfected 293T cell line by CSTB antibody. Lane 1: CSTB transfected lysate (11 kDa). Lane 2: Non-transfected lysate.

**Western Blot Image:**



Western blot of CSTB expression in A-431 cell lysate.

**Requested From:**

Japan

Laboratory Reagent For In Vitro Research Use Only

Not for resale without prior written consent from LifeSpan BioSciences, Inc.

Created on 9/24/2014

© 2014 LifeSpan BioSciences