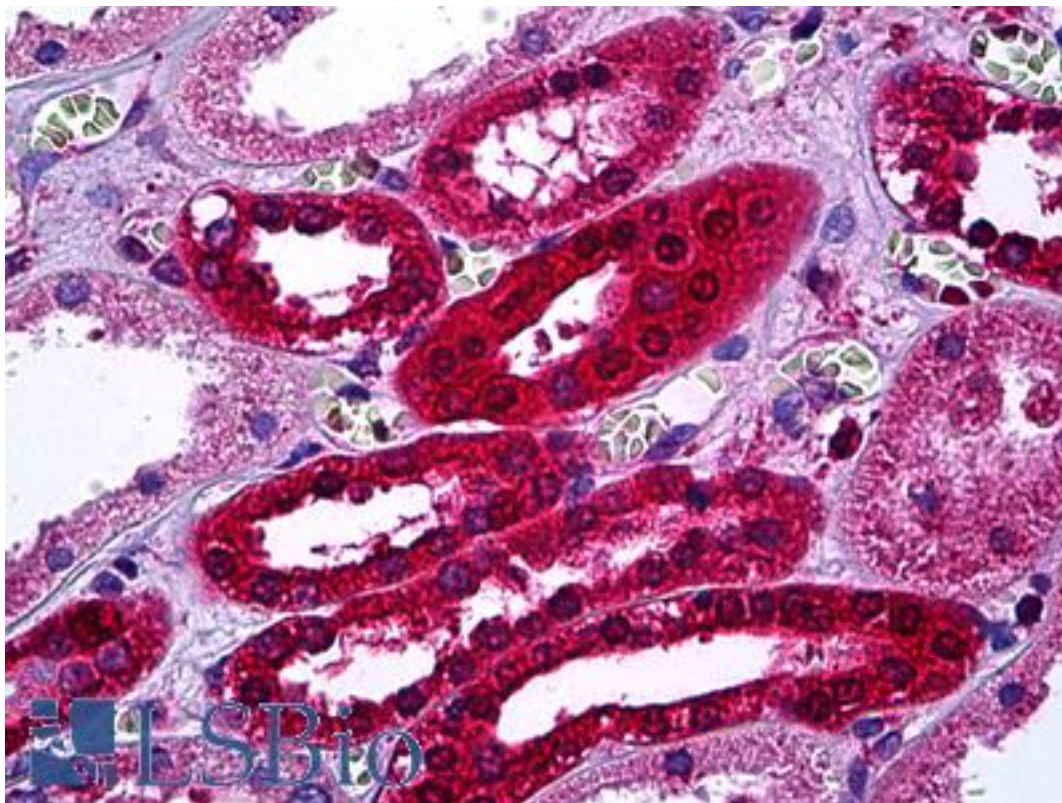


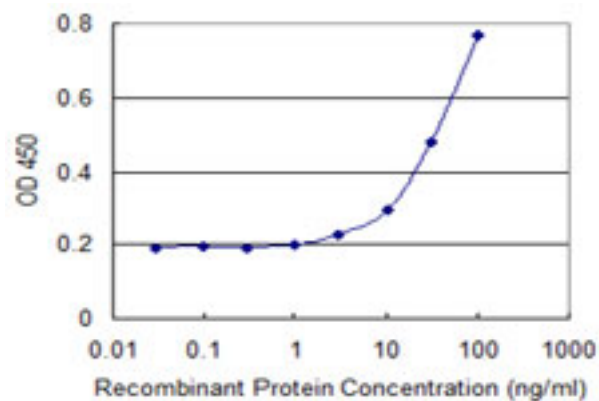
AKR1B1 / Aldose Reductase Mouse anti-Human Monoclonal (2D12) Antibody - LS-B6072 - LSBio	
CatalogID:	LS-B6072
Validation:	This antibody replaces catalog number LS-C133861. It has been validated for use in the following assays: IHC-P.
Target:	aldo-keto reductase family 1, member B1 (aldose reductase) (AKR1B1)
Synonyms:	AKR1B1 Antibody, Aldose reductase Antibody, ALDR1 Antibody, ADR Antibody, Aldehyde reductase Antibody, Aldehyde reductase 1 Antibody, ALR2 Antibody, Lii5-2 CTCL tumor antigen Antibody, Low Km aldose reductase Antibody
Host	AKR1B1 antibody was produced in Mouse
Clonality:	Monoclonal
Isotype:	IgG1,k
Clone Name:	2D12
Immunogen Species:	AKR1B1 / Aldose Reductase antibody was raised against Human
Immunogen:	AKR1B1 / Aldose Reductase antibody was raised against aKR1B1 (AAH00260, 1 a.a. ~ 316 a.a) full-length recombinant protein with GST tag. MW of the GST tag alone is 26 KDa.
Specificity:	Human AKR1B1
Reactivity:	Human
Purification:	Protein A purified
Presentation:	PBS, pH 7.2. Sourced in Ascites.
Recommended Storage:	Store at -20°C or lower. Aliquot to avoid repeated freezing and thawing.
Usage Summary:	Immunohistochemistry: Formalin-fixed paraffin-embedded sections. Sandwich ELISA: Recombinant protein. Western Blot with the recombinant protein used as the immunogen.
Uses:	IHC - Paraffin (2.5 µg/ml), Western blot (1:500 - 1:1000), ELISA (Optimal dilution to be determined by the researcher)
Size:	50 µg
Concentration:	0.47 mg/ml

Immunohistochemistry Image:



Anti-AKR1B1 antibody IHC of human kidney, tubules. Immunohistochemistry of formalin-fixed, paraffin-embedded tissue after heat-induced antigen retrieval. Antibody LS-B6072 concentration 2.5 ug/ml.

ELISA Image:



Detection limit for recombinant GST tagged AKR1B1 is 1 ng/ml as a capture antibody.

Requested From:

Japan

Laboratory Reagent For In Vitro Research Use Only

Not for resale without prior written consent from LifeSpan BioSciences, Inc.

Created on 9/24/2014

© 2014 LifeSpan BioSciences