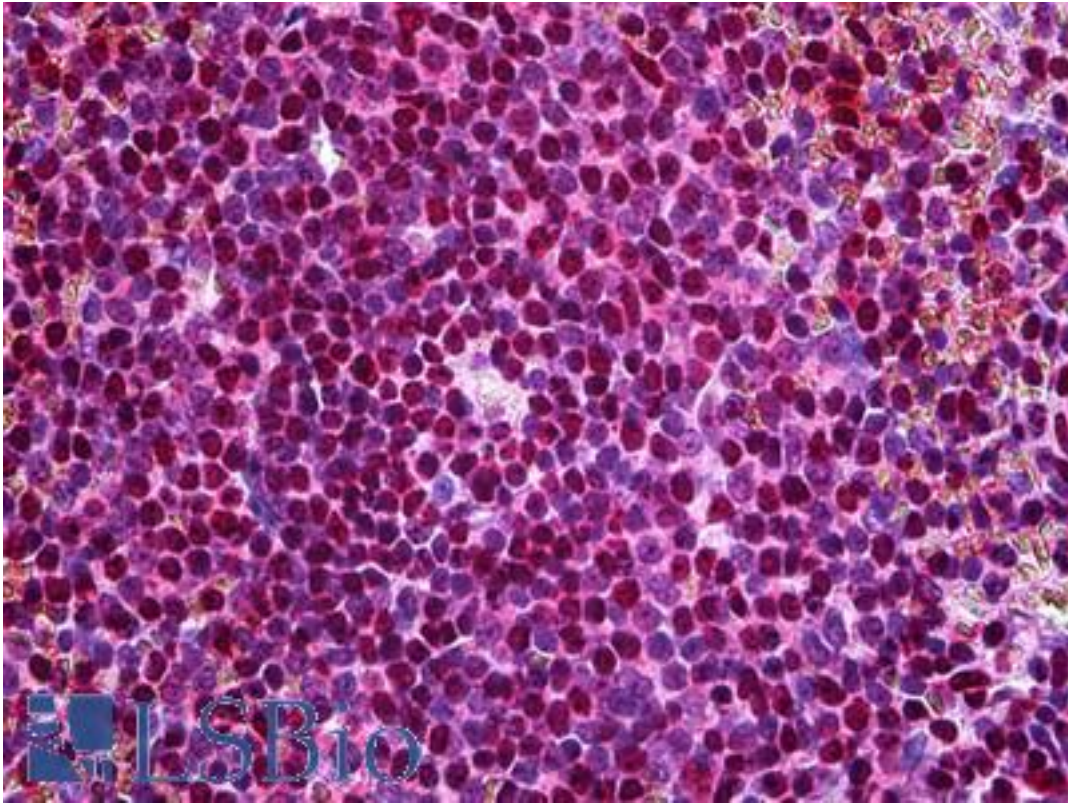


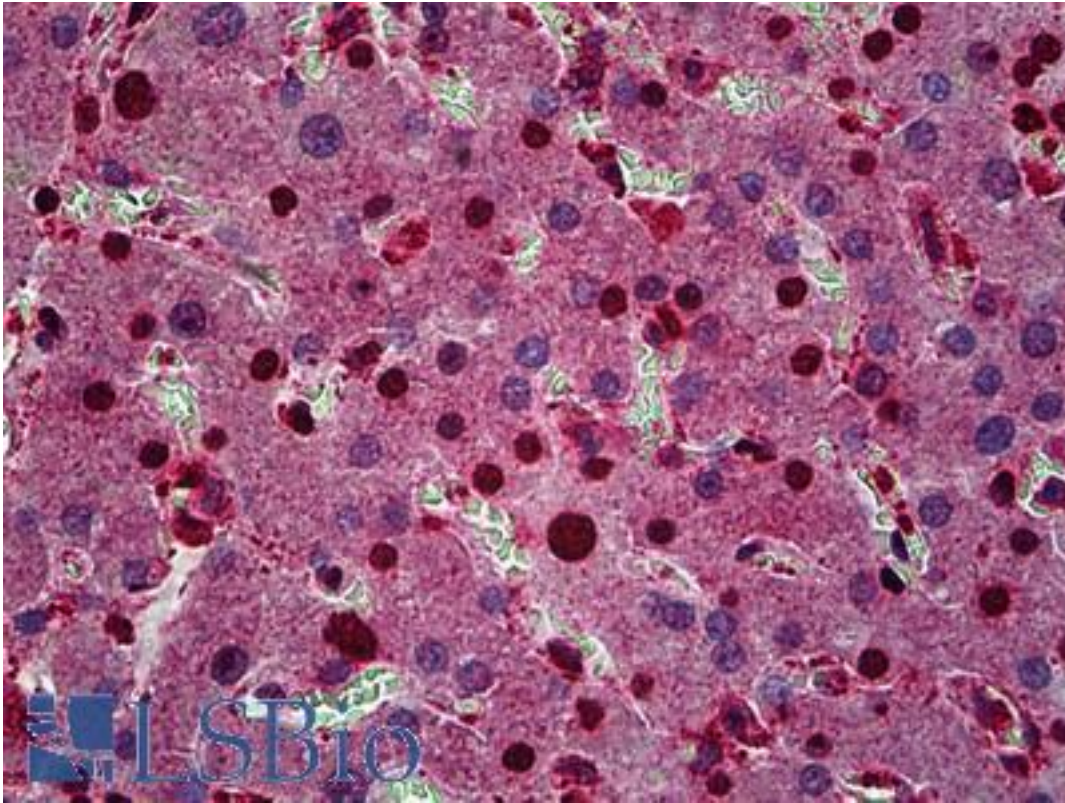
FZR1 / CDH1 Mouse anti-Human Monoclonal (4C4) Antibody - LS-B6070 - LSBio	
CatalogID:	LS-B6070
Validation:	This antibody replaces catalog number LS-C134066. It has been validated for use in the following assays: IHC-P.
Target:	fizzy/cell division cycle 20 related 1 (Drosophila) (FZR1)
Synonyms:	FZR1 Antibody, CDC20-like 1b Antibody, CDC20-like protein 1 Antibody, FYR Antibody, FZR Antibody, FZR2 Antibody, HCDH Antibody, Fizzy-related protein homolog Antibody, KIAA1242 Antibody, CDC20C Antibody, Cdh1/Hct1 homolog Antibody, HCDH1 Antibody
Host	FZR1 antibody was produced in Mouse
Clonality:	Monoclonal
Isotype:	IgG2a,k
Clone Name:	4C4
Immunogen Species:	FZR1 / CDH1 antibody was raised against Human
Immunogen:	FZR1 / CDH1 antibody was raised against fZR1 (AAH13413, 1 a.a. ~ 494 a.a) full-length recombinant protein with GST tag. MW of the GST tag alone is 26 KDa.
Specificity:	Human CDH1
Reactivity:	Human
Purification:	Protein A purified
Presentation:	PBS, pH 7.2. Sourced in Ascites.
Recommended Storage:	Short term 4°C, long term aliquot and store at -20°C, avoid freeze thaw cycles.
Usage Summary:	Immunohistochemistry: Formalin-fixed paraffin-embedded sections. Sandwich ELISA: Recombinant protein. Western Blot using tissue lysates and the recombinant protein used as the immunogen.
Uses:	IHC - Paraffin (5 µg/ml), Western blot (1:500 - 1:1000), ELISA (Optimal dilution to be determined by the researcher)
Size:	50 µg
Concentration:	0.5 mg/ml

Immunohistochemistry Image:



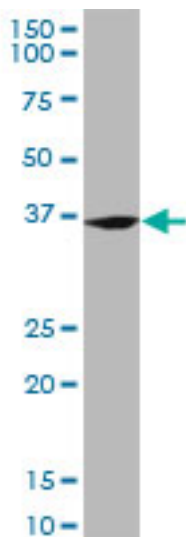
Anti-FZR1 antibody IHC of human spleen. Immunohistochemistry of formalin-fixed, paraffin-embedded tissue after heat-induced antigen retrieval. Antibody LS-B6070 concentration 5 ug/ml.

Immunohistochemistry Image:



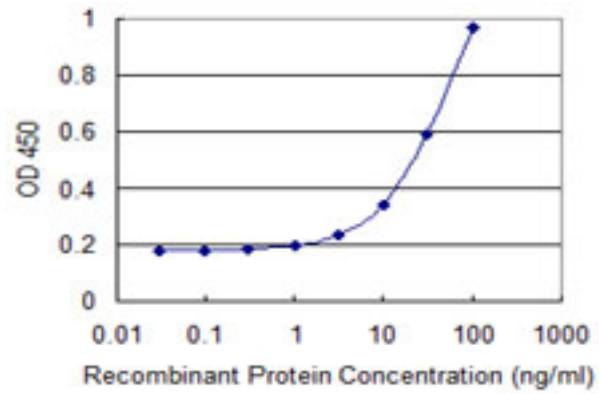
Anti-FZR1 antibody IHC of human liver. Immunohistochemistry of formalin-fixed, paraffin-embedded tissue after heat-induced antigen retrieval. Antibody LS-B6070 concentration 5 ug/ml.

Western Blot Image:



FZR1 monoclonal antibody, clone 4C4. Western blot of FZR1 expression in HeLa NE.

ELISA Image:



Detection limit for recombinant GST tagged FZR1 is 1 ng/ml as a capture antibody.

Requested From:

Japan

Laboratory Reagent For In Vitro Research Use Only

Not for resale without prior written consent from LifeSpan BioSciences, Inc.

Created on 9/24/2014

© 2014 LifeSpan BioSciences