

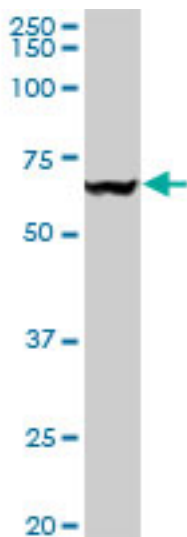
VCP Mouse anti-Human Monoclonal (4A8) Antibody - LS-B6068 - LSBio	
CatalogID:	LS-B6068
Validation:	This antibody replaces catalog number LS-C133972. It has been validated for use in the following assays: IHC-P.
Target:	valosin containing protein (VCP)
Synonyms:	VCP Antibody, 15S Mg(2+)-ATPase p97 subunit Antibody, ALS14 Antibody, TER ATPase Antibody, TERA Antibody, Valosin containing protein Antibody, Yeast Cdc48p homolog Antibody, Valosin-containing protein Antibody, IBMPFD Antibody, p97 Antibody
Host	VCP antibody was produced in Mouse
Clonality:	Monoclonal
Isotype:	IgG2a,k
Clone Name:	4A8
Immunogen Species:	VCP antibody was raised against Human
Immunogen:	VCP antibody was raised against vCP (AAH07562, 1 a.a. ~ 589 a.a) full-length recombinant protein with GST tag. MW of the GST tag alone is 26 KDa.
Specificity:	Human VCP
Reactivity:	Human
Purification:	Protein A purified
Presentation:	PBS, pH 7.2
Recommended Storage:	Short term 4°C, long term aliquot and store at -20°C, avoid freeze thaw cycles.
Usage Summary:	Immunohistochemistry: Formalin-fixed paraffin-embedded sections. Sandwich ELISA: Recombinant protein. Western Blot using tissue lysates and the recombinant protein used as the immunogen.
Uses:	IHC - Paraffin (5 µg/ml), Western blot (1:500 - 1:1000), ELISA (Optimal dilution to be determined by the researcher)
Size:	50 µg
Concentration:	0.37 mg/ml

Immunohistochemistry Image:



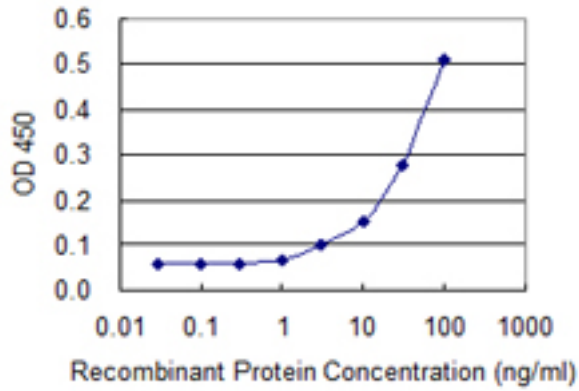
Anti-VCP antibody IHC of human prostate. Immunohistochemistry of formalin-fixed, paraffin-embedded tissue after heat-induced antigen retrieval. Antibody LS-B6068 concentration 5 ug/ml.

Western Blot Image:



VCP monoclonal antibody, clone 4A8. Western blot of VCP expression in HepG2.

ELISA Image:



Detection limit for recombinant GST tagged VCP is 1 ng/ml as a capture antibody.

Requested From:

Japan

Laboratory Reagent For In Vitro Research Use Only

Not for resale without prior written consent from LifeSpan BioSciences, Inc.

Created on 9/24/2014

© 2014 LifeSpan BioSciences