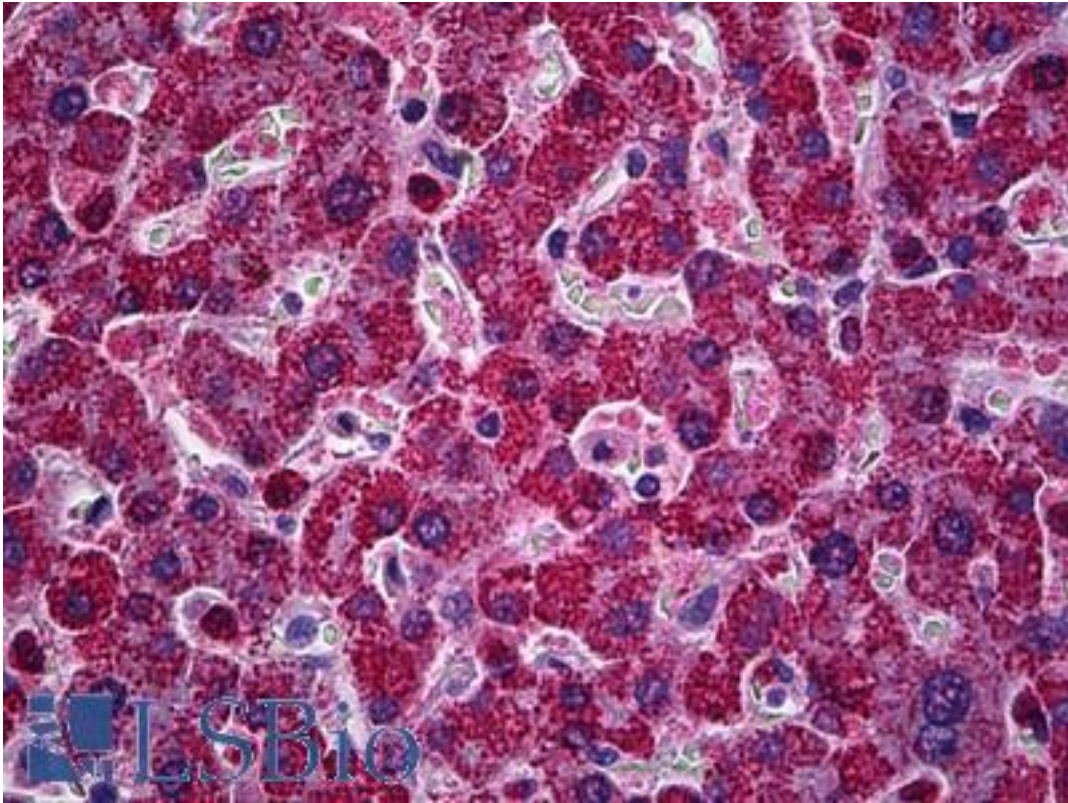


PIM1 / Pim-1 Mouse anti-Human Monoclonal (X1) Antibody - LS-B6063 - LSBio

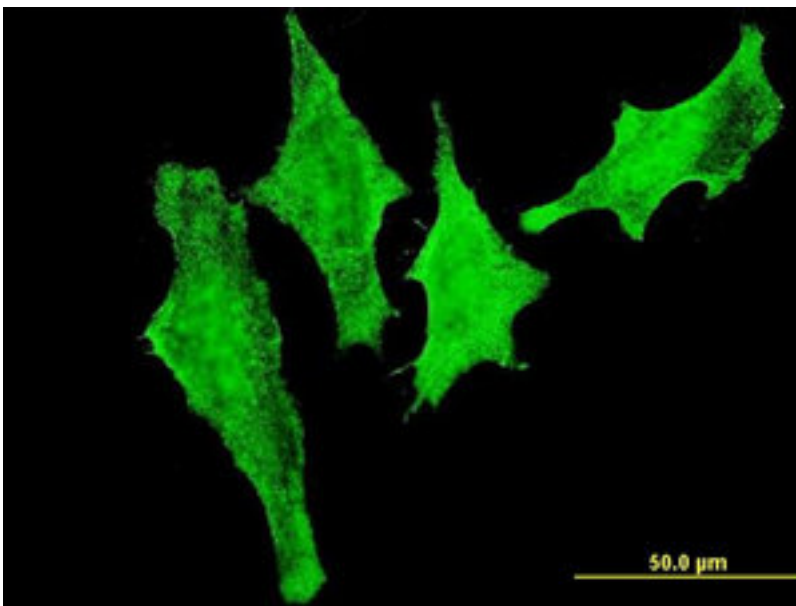
CatalogID:	LS-B6063
Validation:	This antibody replaces catalog number LS-C133928. It has been validated for use in the following assays: IHC-P.
Target:	pim-1 oncogene (PIM1)
Synonyms:	PIM1 Antibody, Pim-1 kinase 44 kDa isoform Antibody, Proviral integration site 1 Antibody, Oncogene PIM1 Antibody, PIM Antibody, Pim-1 Antibody, Pim-1 oncogene Antibody
Family / Subfamily:	Protein Kinase / PIM
Host	PIM1 antibody was produced in Mouse
Clonality:	Monoclonal
Isotype:	IgG2a,k
Clone Name:	X1
Immunogen Species:	PIM1 / Pim-1 antibody was raised against Human
Immunogen:	PIM1 / Pim-1 antibody was raised against pim1 (AAH20224, 1 a.a. ~ 314 a.a) full length recombinant protein with GST tag. MW of the GST tag alone is 26 KDa.
Specificity:	Human PIM1
Reactivity:	Human
Purification:	Protein A purified
Presentation:	PBS, pH 7.2
Recommended Storage:	Short term 4°C, long term aliquot and store at -20°C, avoid freeze thaw cycles.
Usage Summary:	Immunohistochemistry: Formalin-fixed paraffin-embedded sections. Sandwich ELISA: Recombinant protein.
Uses:	IHC - Paraffin (5 µg/ml), Immunofluorescence (10 µg/ml), ELISA (Optimal dilution to be determined by the researcher)
Size:	50 µg
Concentration:	0.5 mg/ml

Immunohistochemistry Image:



Anti-PIM1 antibody IHC of human liver. Immunohistochemistry of formalin-fixed, paraffin-embedded tissue after heat-induced antigen retrieval. Antibody LS-B6063 concentration 5 ug/ml.

Immunofluorescence Image:



Immunofluorescence of monoclonal antibody to PIM1 on HeLa cell. [antibody concentration 10 ug/ml].

Requested From:

Japan

Laboratory Reagent For In Vitro Research Use Only

Not for resale without prior written consent from LifeSpan BioSciences, Inc.

Created on 9/24/2014

© 2014 LifeSpan BioSciences