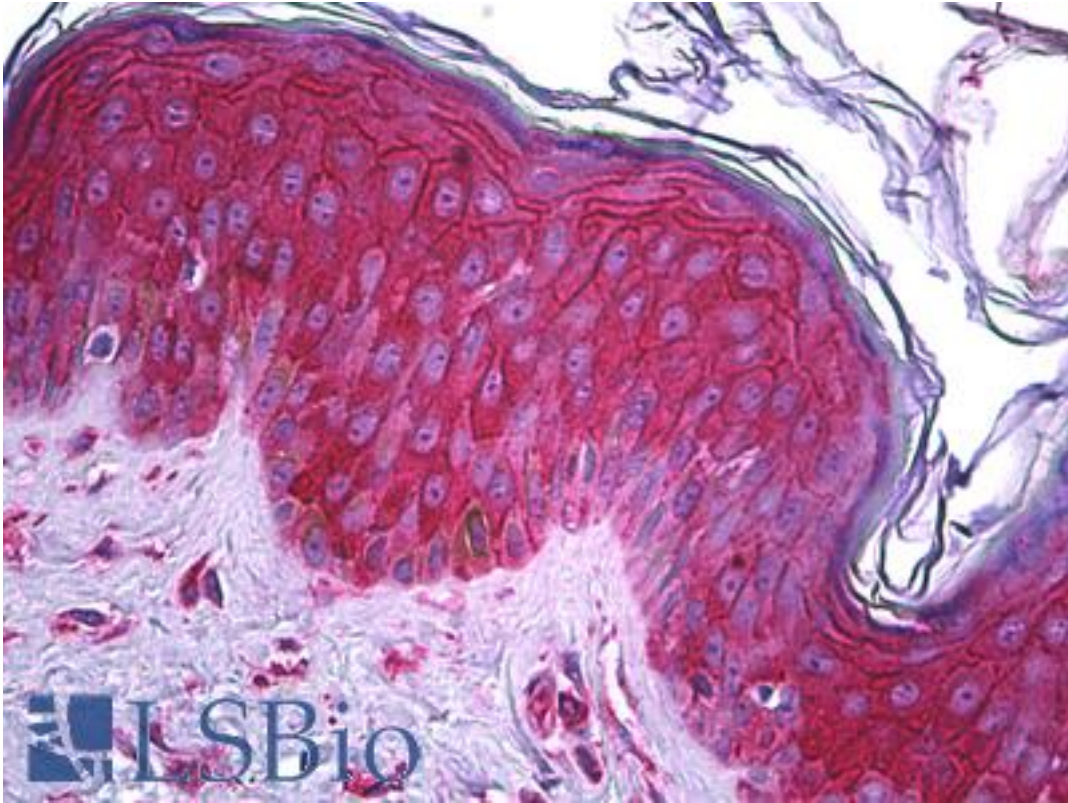


**C-Kit / CD117 Mouse anti-Human Monoclonal (5F6) Antibody - LS-B6058 - LSBio**

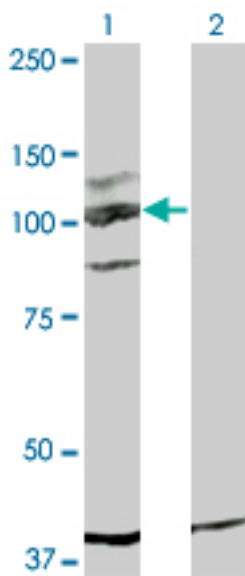
<b>CatalogID:</b>	LS-B6058
<b>Validation:</b>	This antibody replaces catalog number LS-C133899. It has been validated for use in the following assays: IHC-P.
<b>Target:</b>	v-kit Hardy-Zuckerman 4 feline sarcoma viral oncogene homolog
<b>Synonyms:</b>	KIT Antibody, C-Kit Antibody, CD117 Antibody, PBT Antibody, Piebald trait Antibody, Piebald trait protein Antibody, Proto-oncogene c-Kit Antibody, SCFR Antibody, Soluble KIT variant 1 Antibody, Tyrosine-protein kinase Kit Antibody, p145 c-kit Antibody, CD117 antigen Antibody
<b>Family / Subfamily:</b>	Protein Kinase / PDGF Receptor
<b>Host</b>	KIT antibody was produced in Mouse
<b>Clonality:</b>	Monoclonal
<b>Isotype:</b>	IgG2b,k
<b>Clone Name:</b>	5F6
<b>Immunogen Species:</b>	C-Kit / CD117 antibody was raised against Human
<b>Immunogen:</b>	C-Kit / CD117 antibody was raised against kIT (NP_000213, 41 a.a. ~ 140 a.a) partial recombinant protein with GST tag. MW of the GST tag alone is 26 KDa.
<b>Specificity:</b>	Human c-Kit
<b>Reactivity:</b>	Human
<b>Purification:</b>	Protein A purified
<b>Presentation:</b>	PBS, pH 7.2
<b>Recommended Storage:</b>	Short term 4°C, long term aliquot and store at -20°C, avoid freeze thaw cycles.
<b>Usage Summary:</b>	Immunohistochemistry: Formalin-fixed paraffin-embedded sections. Sandwich ELISA: Recombinant protein. Western Blot using transfected cell lysates and the recombinant protein used as the immunogen.
<b>Uses:</b>	IHC - Paraffin (2.5 µg/ml), Western blot (1:500 - 1:1000), ELISA (Optimal dilution to be determined by the researcher)
<b>Size:</b>	50 µg
<b>Concentration:</b>	0.49 mg/ml

**Immunohistochemistry Image:**



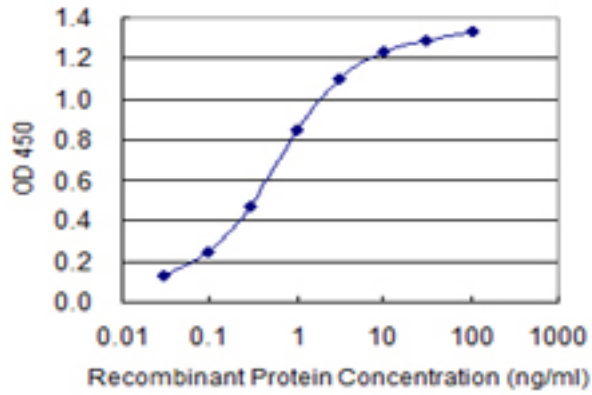
Anti-c-Kit antibody IHC of human skin. Immunohistochemistry of formalin-fixed, paraffin-embedded tissue after heat-induced antigen retrieval. Antibody LS-B6058 concentration 2.5 ug/ml.

**Western Blot Image:**



Western blot of KIT expression in transfected 293T cell line by KIT monoclonal antibody, clone 5F6.

**ELISA Image:**



Detection limit for recombinant GST tagged KIT is 0.03 ng/ml as a capture antibody.

**Requested From:**

Japan

Laboratory Reagent For In Vitro Research Use Only

Not for resale without prior written consent from LifeSpan BioSciences, Inc.

Created on 9/24/2014

© 2014 LifeSpan BioSciences