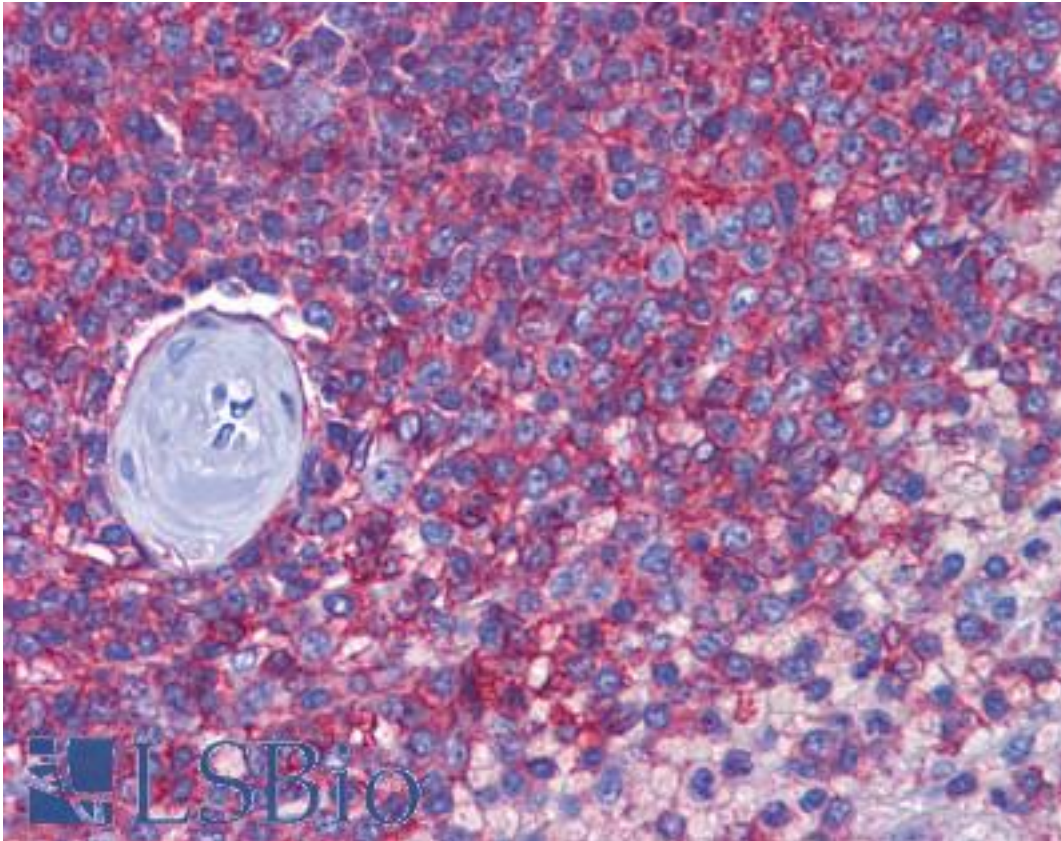


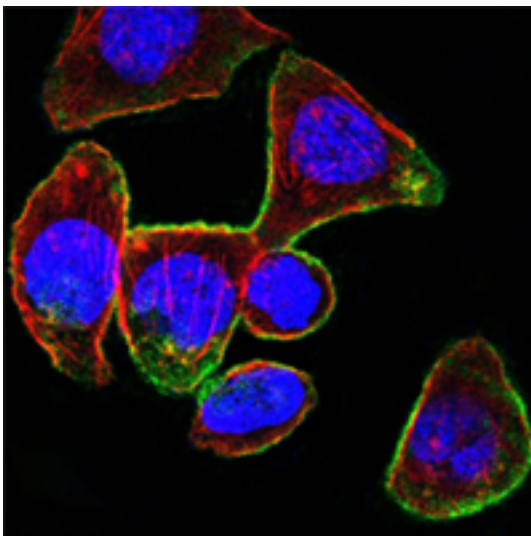
CD44 Mouse anti-Human Monoclonal (8E2F3) Antibody - LS-B6050 - LSBio	
CatalogID:	LS-B6050
Validation:	This antibody replaces catalog number LS-C108779. It has been validated for use in the following assays: IHC-P.
Target:	CD44 molecule (Indian blood group)
Synonyms:	CD44 Antibody, CDW44 Antibody, CD44 antigen Antibody, Cell surface glycoprotein CD44 Antibody, CSPG8 Antibody, ECMR-III Antibody, Epican Antibody, HUTCH-I Antibody, LHR Antibody, MDU2 Antibody, MC56 Antibody, MIC4 Antibody, Hermes antigen Antibody, Hyaluronate receptor Antibody, Phagocytic glycoprotein 1 Antibody, PGP-1 Antibody, PGP-I Antibody, Pgp1 Antibody, Phagocytic glycoprotein I Antibody, MDU3 Antibody, CD44R Antibody, HCELL Antibody, Heparan sulfate proteoglycan Antibody
Host	CD44 antibody was produced in Mouse
Clonality:	Monoclonal
Isotype:	IgG1
Clone Name:	8E2F3
Immunogen Species:	CD44 antibody was raised against Human
Immunogen:	CD44 antibody was raised against purified recombinant fragment of human CD44 (628-699) expressed in E. coli.
Specificity:	human CD44
Reactivity:	Human, Mouse
Purification:	Ascites
Presentation:	Ascites fluid, 0.03% sodium azide
Recommended Storage:	Long term: -20°C; Short term: +4°C. Avoid repeat freeze-thaw cycles.
Uses:	IHC - Paraffin (1:50), Immunofluorescence (1:200 - 1:1000), Western blot (1:500 - 1:2000), Flow Cytometry (1:200 - 1:400), ELISA (1:10000) (Optimal dilution to be determined by the researcher)
Size:	50 µl

Immunohistochemistry Image:



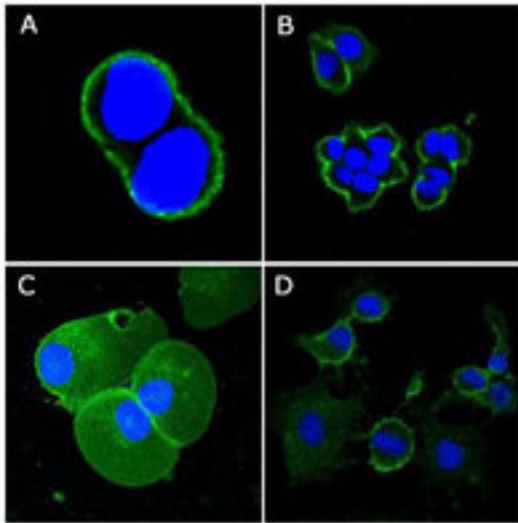
Anti-CD44 antibody IHC of human spleen. Immunohistochemistry of formalin-fixed, paraffin-embedded tissue after heat-induced antigen retrieval. Antibody LS-B6050 dilution 1:50.

Immunofluorescence Image:



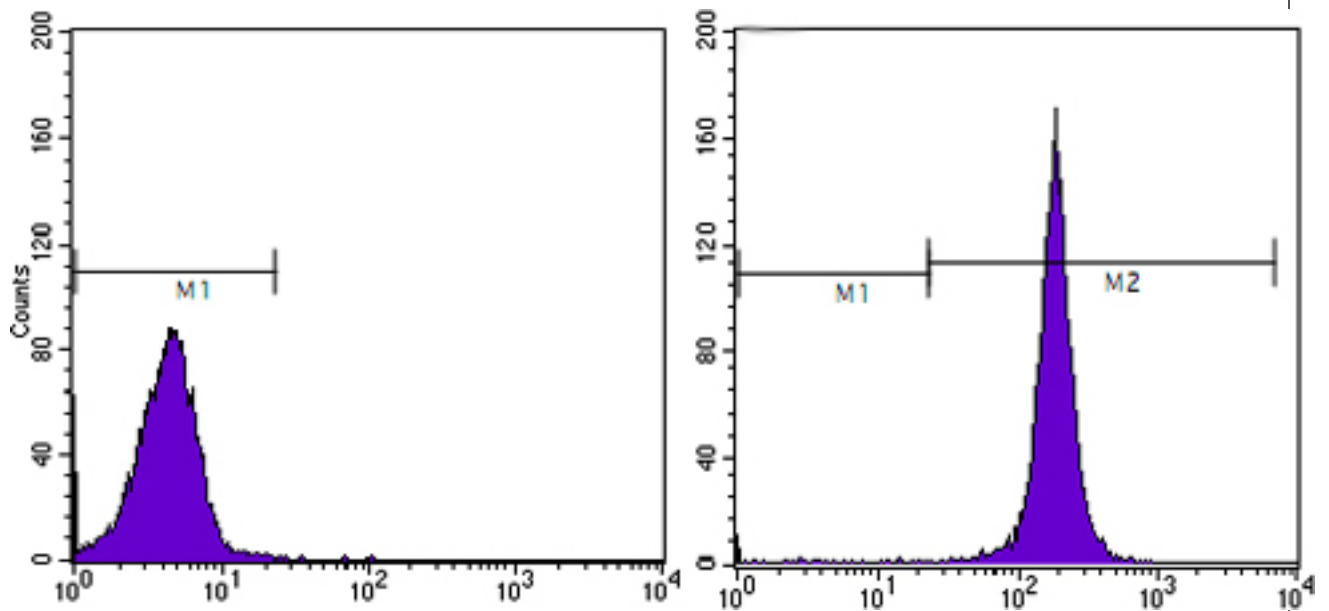
Confocal immunofluorescence of PANC-1 cells using anti-CD44 mAb (green). Red: Actin filaments have been labeled with DY-554 phalloidin. Blue: DRAQ5 fluorescent DNA dye.

Immunocytochemistry Image:



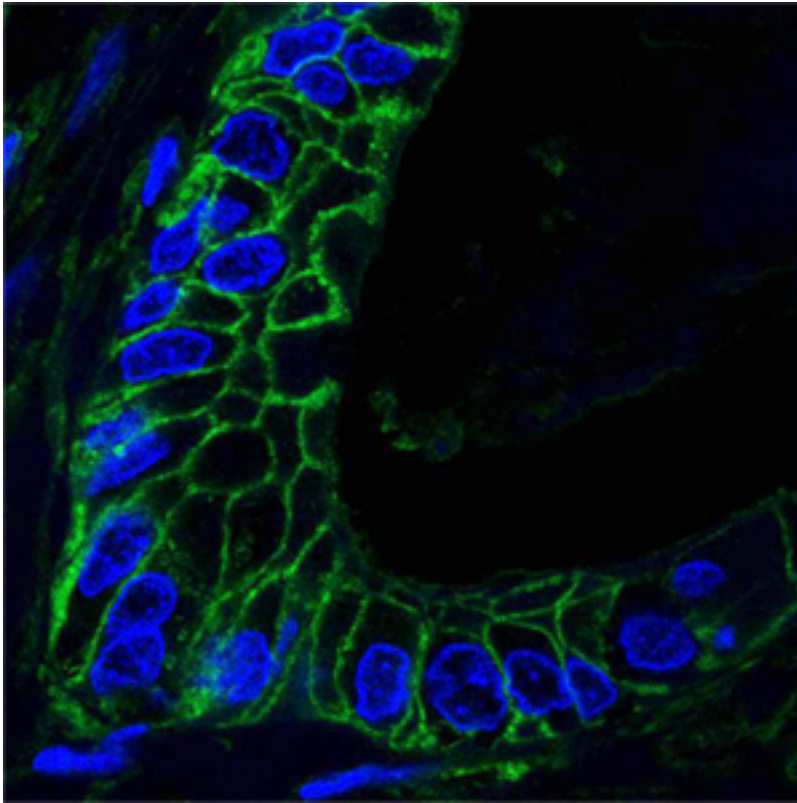
Confocal immunofluorescence of methanol-fixed A431 (A), HeLa (B), PANC-1 (C) and EC (D) cells using anti-CD44 mAb (green), showing membrane localization. Blue: DRAQ5 fluorescent DNA dye.

Flow Cytometry Image:



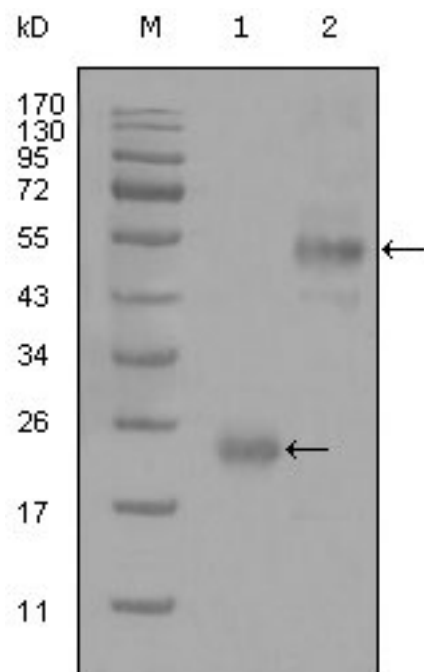
Flow cytometry of HeLa cells using anti-CD44 mAb (right) and negative control (left).

Western Blot Image:



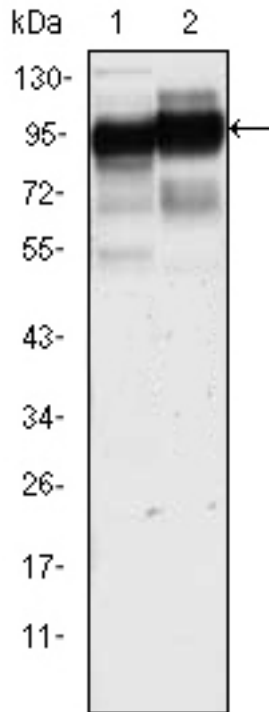
Confocal analysis of paraffin-embedded human lung cancer tissues using anti-CD44 mAb (green), showing membrane localization. Blue: DRAQ5 fluorescent DNA dye.

Western Blot Image:



Western blot of anti-CD44 mAb against truncated Trx-CD44 recombinant protein (1) and GST-CD44 (aa628-699) recombinant protein (2).

Western Blot Image:



Western blot of anti-CD44 mAb against HeLa (1) and HUVE-12(2) cell lysate.

Requested From:

Japan

Laboratory Reagent For In Vitro Research Use Only

Not for resale without prior written consent from LifeSpan BioSciences, Inc.

Created on 9/24/2014

© 2014 LifeSpan BioSciences