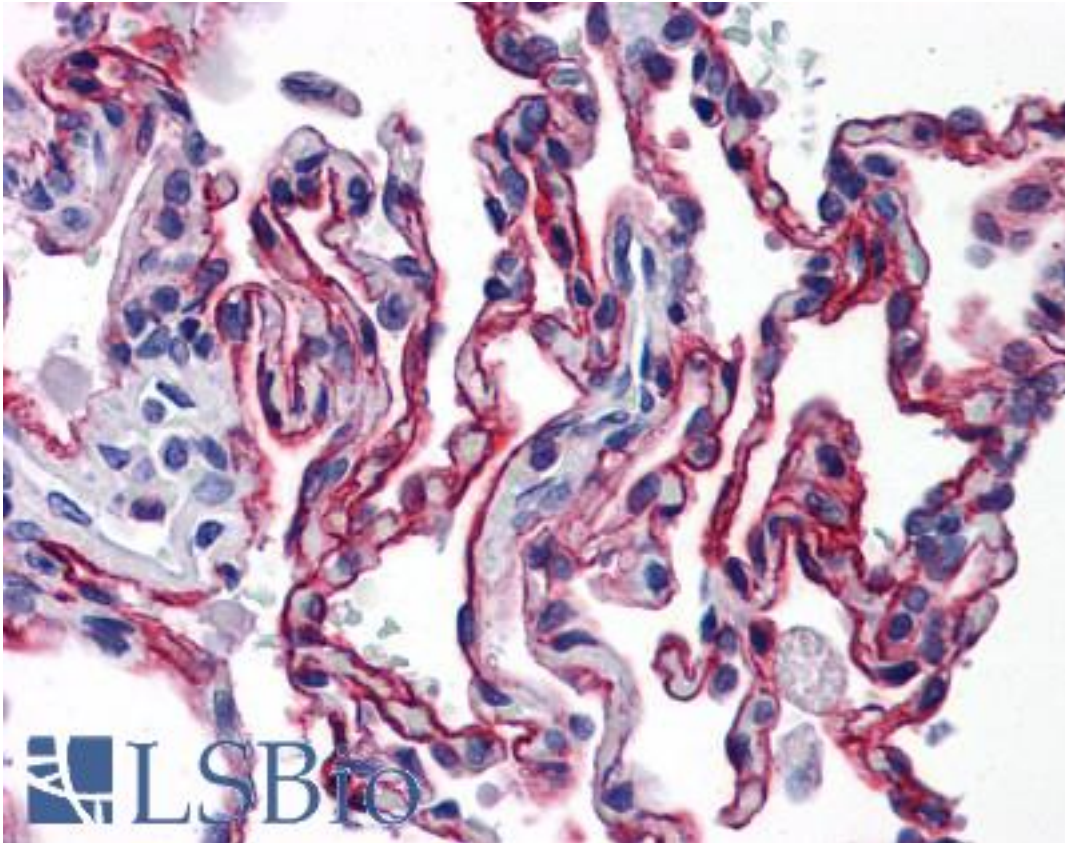


AGER / RAGE Mouse anti-Human Monoclonal (aa23-405) (1C1) Antibody - LS-B6042 - LSBio	
<b>CatalogID:</b>	LS-B6042
<b>Validation:</b>	This antibody replaces catalog number LS-C131266. It has been validated for use in the following assays: IHC-P.
<b>Target:</b>	advanced glycosylation end product-specific receptor (AGER)
<b>Synonyms:</b>	AGER Antibody, RAGE Antibody, RAGE isoform NtRAGE-delta Antibody, RAGE isoform sRAGE-delta Antibody
<b>Host</b>	AGER antibody was produced in Mouse
<b>Clonality:</b>	Monoclonal
<b>Isotype:</b>	IgG2a,k
<b>Clone Name:</b>	1C1
<b>Immunogen Species:</b>	AGER / RAGE antibody was raised against Human
<b>Immunogen:</b>	AGER / RAGE antibody was raised against aGER (AAH20669, 23-405aa) full length recombinant protein with GST tag. MW of the GST tag alone is 26kD.
<b>Specificity:</b>	Recognizes human AGER.
<b>Epitope:</b>	aa23-405
<b>Reactivity:</b>	Human
<b>Purification:</b>	Purified
<b>Presentation:</b>	PBS, pH 7.2
<b>Recommended Storage:</b>	May be stored at 4°C for short-term only. Aliquot to avoid repeated freezing and thawing. Store at -20°C. Aliquots are stable for at least 12 months.
<b>Usage Summary:</b>	Suitable for use in ELISA and Western Blot.
<b>Uses:</b>	IHC - Paraffin (10 µg/ml), Western blot (0.1 - 5 µg/ml), ELISA (Optimal dilution to be determined by the researcher)
<b>Size:</b>	50 µg
<b>Concentration:</b>	1 mg/ml

**Immunohistochemistry Image:**



Anti-RAGE antibody IHC of human lung. Immunohistochemistry of formalin-fixed, paraffin-embedded tissue after heat-induced antigen retrieval. Antibody LS-B6042 concentration 10 ug/ml.

**Requested From:**

Japan

Laboratory Reagent For In Vitro Research Use Only

Not for resale without prior written consent from LifeSpan BioSciences, Inc.

Created on 9/24/2014

© 2014 LifeSpan BioSciences