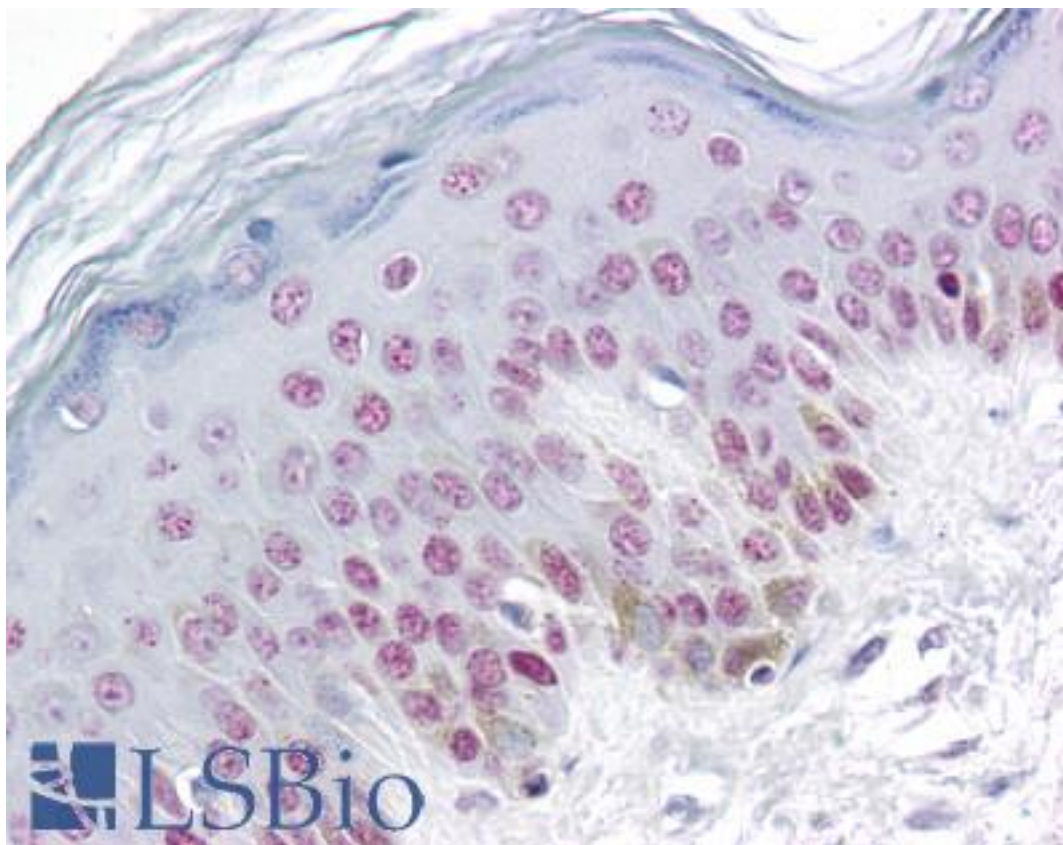


RBM3 Mouse anti-Human Monoclonal (4D6) Antibody - LS-B6040 - LSBio

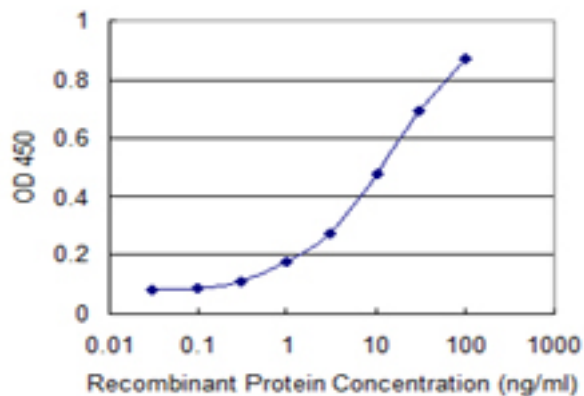
CatalogID:	LS-B6040
Validation:	This antibody replaces catalog number LS-C133938. It has been validated for use in the following assays: IHC-P.
Target:	RNA binding motif (RNP1, RRM) protein 3 (RBM3)
Synonyms:	RBM3 Antibody, IS1-RNPL Antibody, RNA binding motif protein 3 Antibody, RNPL Antibody, RNA-binding motif protein 3 Antibody, Putative RNA-binding protein 3 Antibody
Host	RBM3 antibody was produced in Mouse
Clonality:	Monoclonal
Isotype:	IgG1,k
Clone Name:	4D6
Immunogen Species:	RBM3 antibody was raised against Human
Immunogen:	RBM3 antibody was raised against rBM3 (NP_006734, 1 a.a. ~ 81 a.a) partial recombinant protein with GST tag. MW of the GST tag alone is 26 KDa.
Specificity:	Human RBM3
Reactivity:	Human
Purification:	Protein A purified
Presentation:	PBS, pH 7.2. Sourced in Ascites.
Recommended Storage:	Aliquot and store at -20°C or -80°C. Avoid freeze-thaw cycles.
Usage Summary:	Immunohistochemistry: Formalin-fixed paraffin-embedded sections. Sandwich ELISA: Recombinant protein. Western Blot: Recombinant protein.
Uses:	IHC - Paraffin (10 - 20 µg/ml), Western blot (1:500 - 1:1000), ELISA (Optimal dilution to be determined by the researcher)
Size:	50 µg
Concentration:	0.5 mg/ml

Immunohistochemistry Image:



Anti-RBM3 antibody IHC of human skin. Immunohistochemistry of formalin-fixed, paraffin-embedded tissue after heat-induced antigen retrieval. Antibody LS-B6040 concentration 10 ug/ml.

ELISA Image:



Detection limit for recombinant GST tagged RBM3 is 0.1 ng/ml as a capture antibody.

Requested From:

Japan

Laboratory Reagent For In Vitro Research Use Only

Not for resale without prior written consent from LifeSpan BioSciences, Inc.

Created on 9/24/2014

© 2014 LifeSpan BioSciences