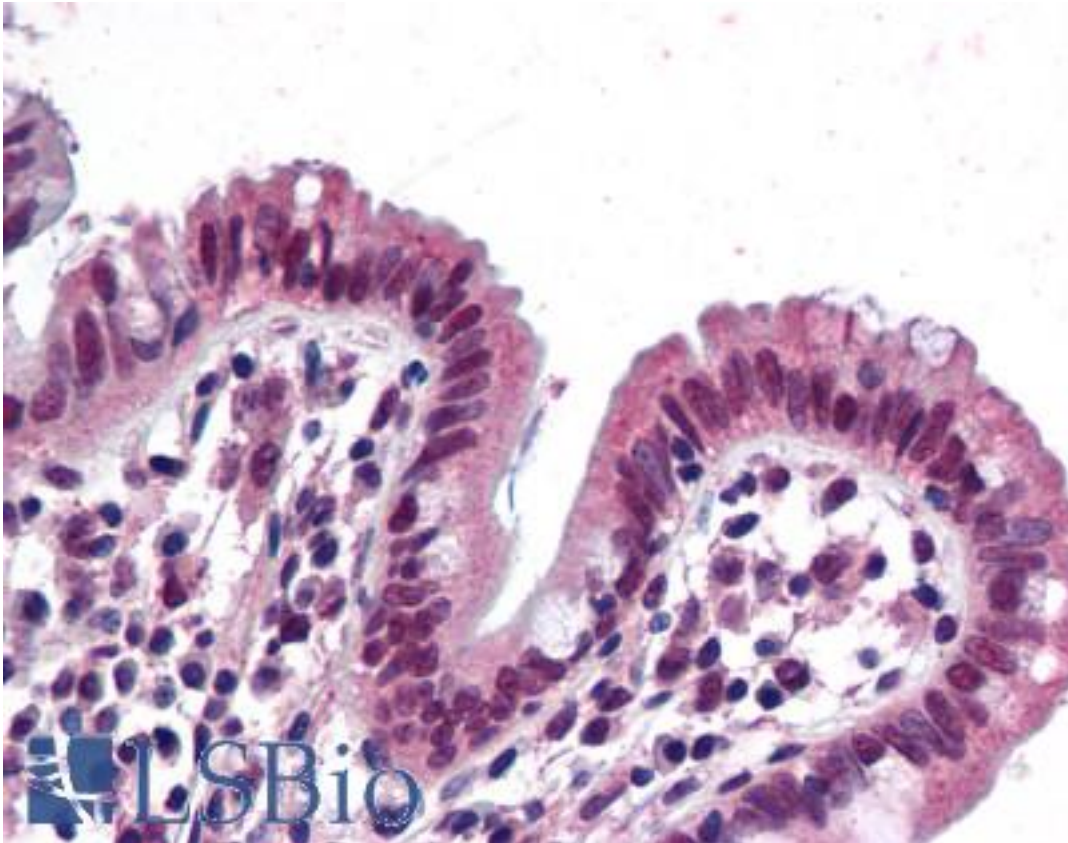


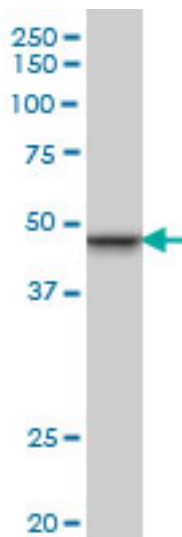
SMARCB1 / INI1 Mouse anti-Human Monoclonal (3E10) Antibody - LS-B6039 - LSBio	
CatalogID:	LS-B6039
Validation:	This antibody replaces catalog number LS-C133439. It has been validated for use in the following assays: IHC-P.
Target:	SWI/SNF related, matrix associated, actin dependent regulator of chromatin, subfamily b, member 1 (SMARCB1)
Synonyms:	SMARCB1 Antibody, BRG1-associated factor 47 Antibody, BAF47 Antibody, HSNF5 Antibody, Integrase interactor 1 protein Antibody, Kiaa0379 Antibody, HSNFS Antibody, RTPS1 Antibody, SNF5 Antibody, Snr1 Antibody, RDT Antibody, Sfh1p Antibody, SNF5L1 Antibody, INI1 Antibody, MRD15 Antibody, SNF5 homolog Antibody
Host	SMARCB1 antibody was produced in Mouse
Clonality:	Monoclonal
Isotype:	IgG1,k
Clone Name:	3E10
Immunogen Species:	SMARCB1 / INI1 antibody was raised against Human
Immunogen:	SMARCB1 / INI1 antibody was raised against sMARCB1 (NP_003064, 81 a.a. ~ 181 a.a) partial recombinant protein with GST tag. MW of the GST tag alone is 26 KDa.
Specificity:	Human SMARCB1
Reactivity:	Human, Mouse, Rat
Purification:	Protein A purified
Presentation:	PBS, pH 7.2. Sourced in Ascites.
Recommended Storage:	Store at -20°C or lower. Aliquot to avoid repeated freezing and thawing.
Usage Summary:	Immunohistochemistry: Formalin-fixed paraffin-embedded sections. Sandwich ELISA: Recombinant protein. Western Blot: Cell lysate, Cell lysate, Cell lysate, Cell lysate, Recombinant protein.
Uses:	IHC - Paraffin (10 µg/ml), Western blot (1:500 - 1:1000), ELISA (Optimal dilution to be determined by the researcher)
Size:	50 µg
Concentration:	0.38 mg/ml

Immunohistochemistry Image:



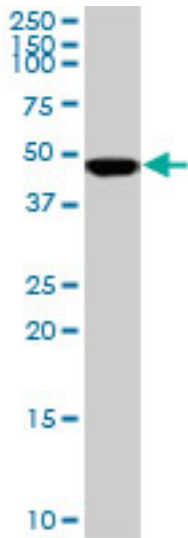
Anti-SMARCB1 antibody IHC of human colon. Immunohistochemistry of formalin-fixed, paraffin-embedded tissue after heat-induced antigen retrieval. Antibody LS-B6039 concentration 10 ug/ml.

Western Blot Image:



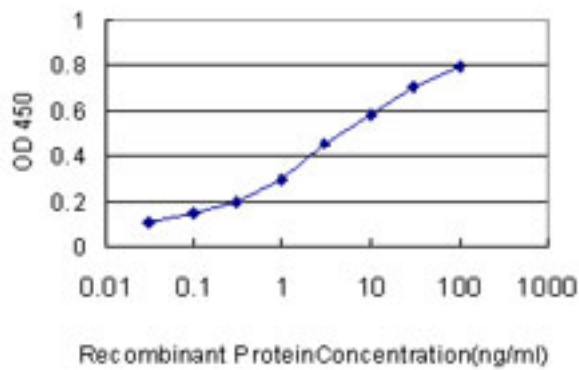
Western blot of SMARCB1 expression in PC-12 cell lysate.

Western Blot Image:



Western blot of SMARCB1 expression in HeLa nuclear extract.

ELISA Image:



Detection limit for recombinant GST tagged SMARCB1 is approximately 0.03 ng/ml as a capture antibody.

Requested From:

Japan

Laboratory Reagent For In Vitro Research Use Only

Not for resale without prior written consent from LifeSpan BioSciences, Inc.

Created on 9/24/2014

© 2014 LifeSpan BioSciences