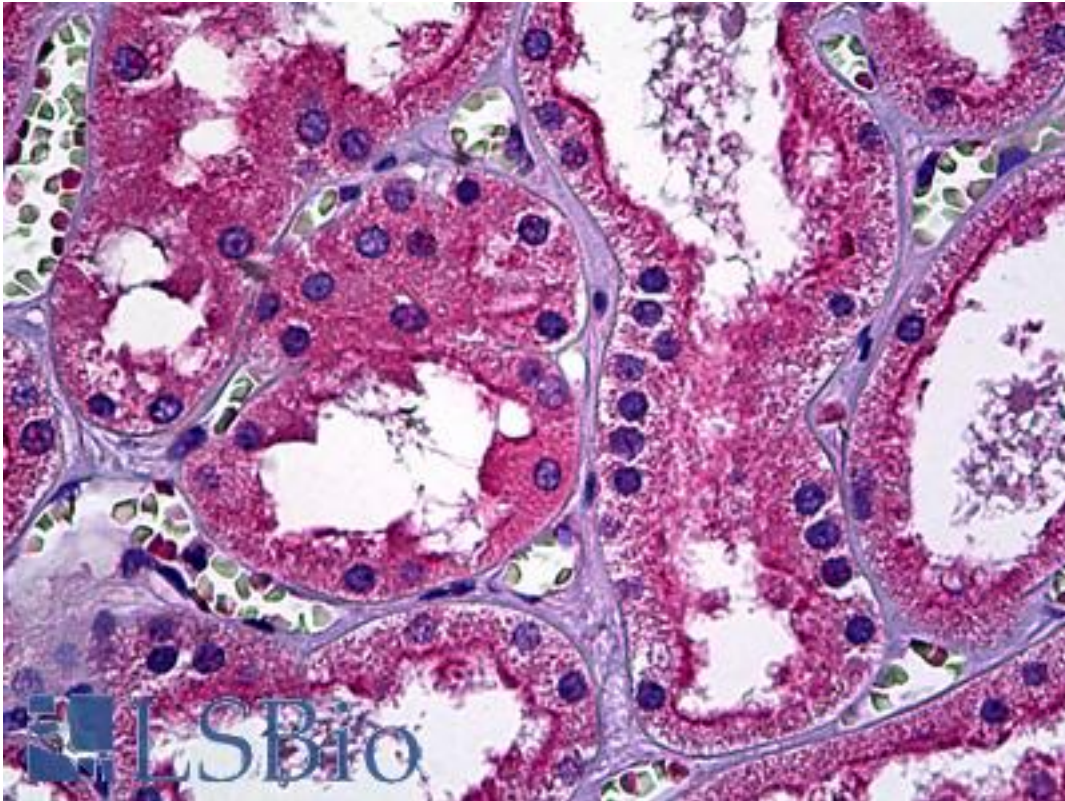


HER3 / ERBB3 Mouse anti-Human Monoclonal (2C7) Antibody - LS-B6037 - LSBio

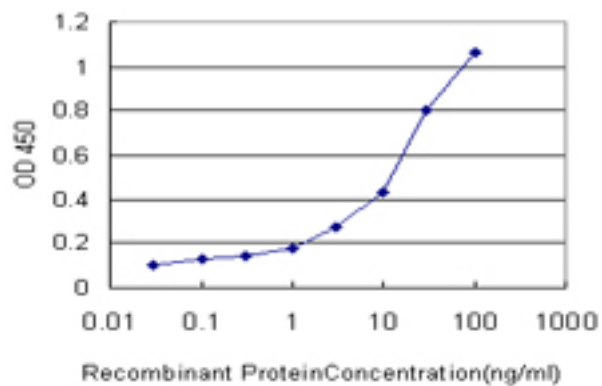
CatalogID:	LS-B6037
Validation:	This antibody replaces catalog number LS-C133888. It has been validated for use in the following assays: IHC-P.
Target:	v-erb-b2 avian erythroblastic leukemia viral oncogene homolog 3 (ERBB3)
Synonyms:	ERBB3 Antibody, C-erbB-3 Antibody, C-erbB3 Antibody, ErbB-3 Antibody, HER3 Antibody, p85-sErbB3 Antibody, p45-sErbB3 Antibody, MDA-BF-1 Antibody, ErbB3 -S Antibody, LCCS2 Antibody, p180-ErbB3 Antibody
Family / Subfamily:	Protein Kinase / EGF Receptor
Host	ERBB3 antibody was produced in Mouse
Clonality:	Monoclonal
Isotype:	IgG2b,k
Clone Name:	2C7
Immunogen Species:	HER3 / ERBB3 antibody was raised against Human
Immunogen:	HER3 / ERBB3 antibody was raised against eRBB3 (AAH02706, 21 a.a. ~ 332 a.a) full length recombinant protein with GST tag. MW of the GST tag alone is 26 KDa.
Specificity:	Human ERBB3
Reactivity:	Human
Purification:	Protein A purified
Presentation:	PBS, pH 7.2
Recommended Storage:	Short term 4°C, long term aliquot and store at -20°C, avoid freeze thaw cycles.
Usage Summary:	Immunohistochemistry: Formalin-fixed paraffin-embedded sections. Sandwich ELISA: Recombinant protein.
Uses:	IHC - Paraffin (10 µg/ml), ELISA (Optimal dilution to be determined by the researcher)
Size:	50 µg
Concentration:	0.49 mg/ml

Immunohistochemistry Image:



Anti-HER3 antibody IHC of human kidney, tubules. Immunohistochemistry of formalin-fixed, paraffin-embedded tissue after heat-induced antigen retrieval. Antibody LS-B6037 concentration 10 ug/ml.

ELISA Image:



Detection limit for recombinant GST tagged ERBB3 is approximately 0.3 ng/ml as a capture antibody.

Requested From:

Japan

Laboratory Reagent For In Vitro Research Use Only

Not for resale without prior written consent from LifeSpan BioSciences, Inc.

Created on 9/24/2014

© 2014 LifeSpan BioSciences