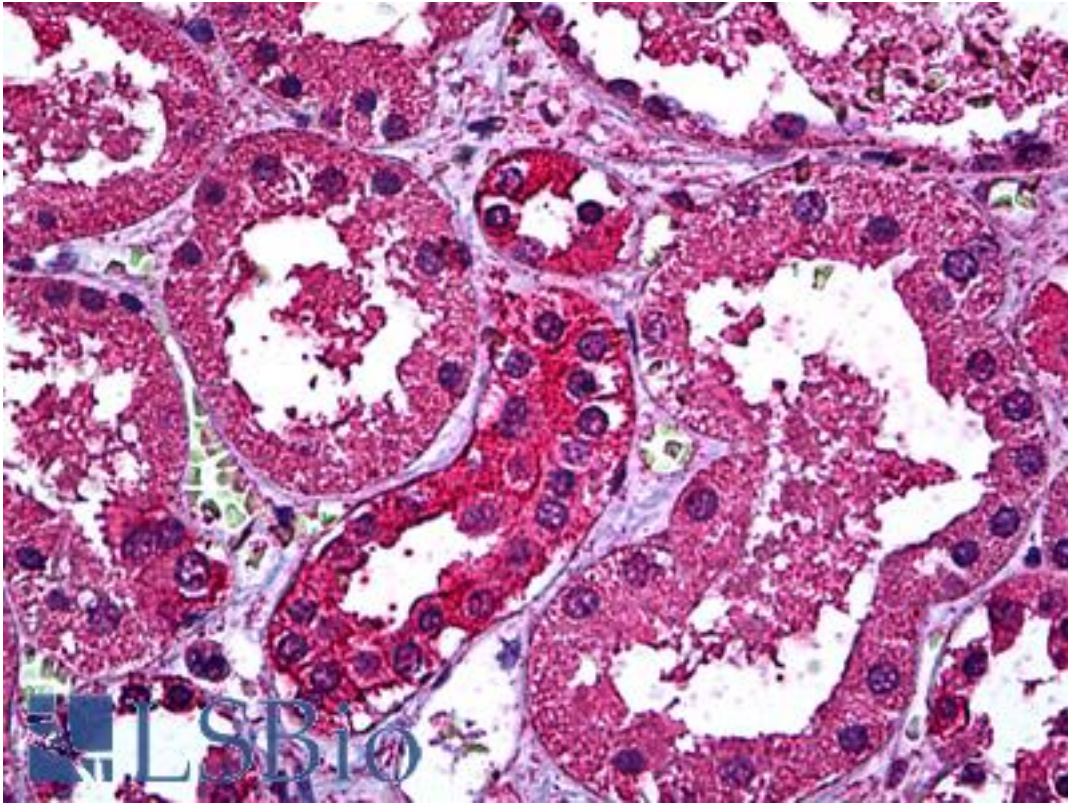


HER3 / ERBB3 Mouse anti-Human Monoclonal (2E9) Antibody - LS-B6035 - LSBio

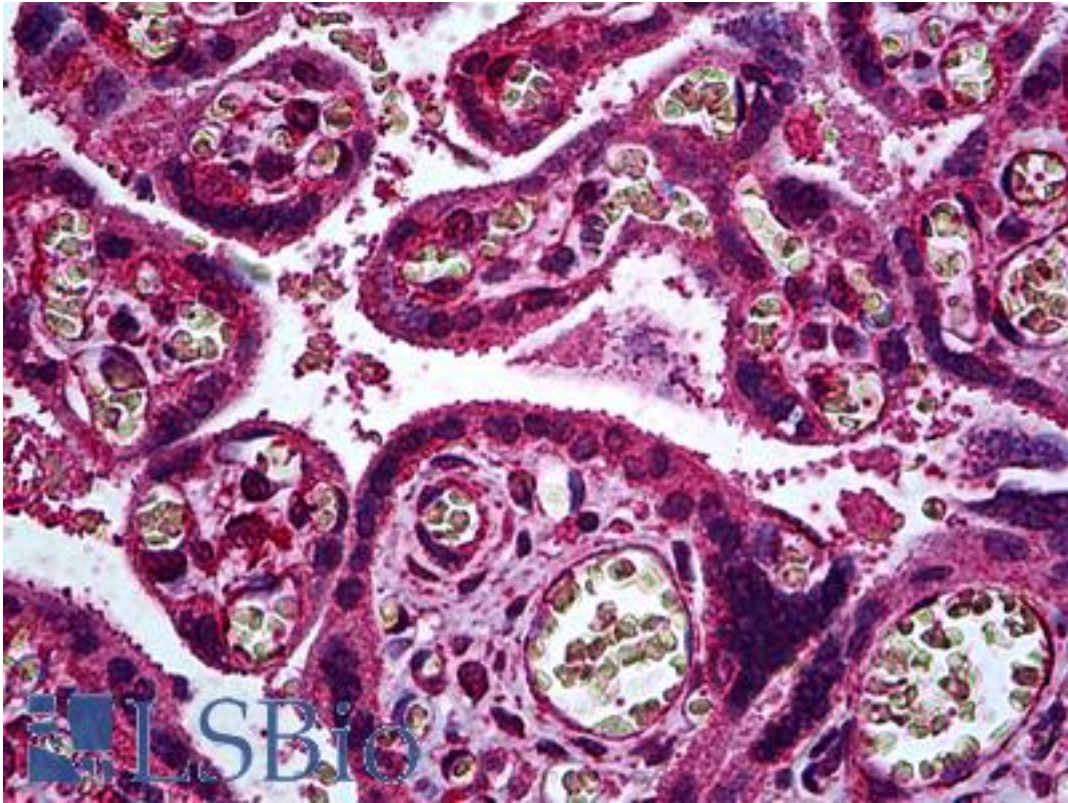
| | |
|-----------------------------|--|
| CatalogID: | LS-B6035 |
| Validation: | This antibody replaces catalog number LS-C133885. It has been validated for use in the following assays: IHC-P. |
| Target: | v-erb-b2 avian erythroblastic leukemia viral oncogene homolog 3 (ERBB3) |
| Synonyms: | ERBB3 Antibody, C-erbB-3 Antibody, C-erbB3 Antibody, ErbB-3 Antibody, HER3 Antibody, p85-sErbB3 Antibody, p45-sErbB3 Antibody, MDA-BF-1 Antibody, ErbB3 -S Antibody, LCCS2 Antibody, p180-ErbB3 Antibody |
| Family / Subfamily: | Protein Kinase / EGF Receptor |
| Host | ERBB3 antibody was produced in Mouse |
| Clonality: | Monoclonal |
| Isotype: | IgG1,k |
| Clone Name: | 2E9 |
| Immunogen Species: | HER3 / ERBB3 antibody was raised against Human |
| Immunogen: | HER3 / ERBB3 antibody was raised against eRBB3 (AAH02706, 1 a.a. ~ 131 a.a) partial recombinant protein with GST tag. MW of the GST tag alone is 26 KDa. |
| Specificity: | Human ERBB3 |
| Reactivity: | Human |
| Purification: | Protein A purified |
| Presentation: | PBS, pH 7.4 |
| Recommended Storage: | Short term 4°C, long term aliquot and store at -20°C, avoid freeze thaw cycles. |
| Usage Summary: | Immunohistochemistry: Formalin-fixed paraffin-embedded sections. Sandwich ELISA: Recombinant protein. Western Blot with the recombinant protein used as the immunogen. |
| Uses: | IHC - Paraffin (5 µg/ml), Western blot (1:500 - 1:1000), ELISA (Optimal dilution to be determined by the researcher) |
| Size: | 50 µg |
| Concentration: | 0.42 mg/ml |

Immunohistochemistry Image:



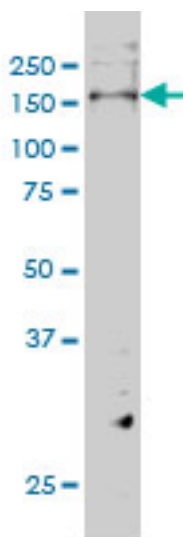
Anti-HER3 antibody IHC of human kidney. Immunohistochemistry of formalin-fixed, paraffin-embedded tissue after heat-induced antigen retrieval. Antibody LS-B6035 concentration 5 ug/ml.

Immunohistochemistry Image:



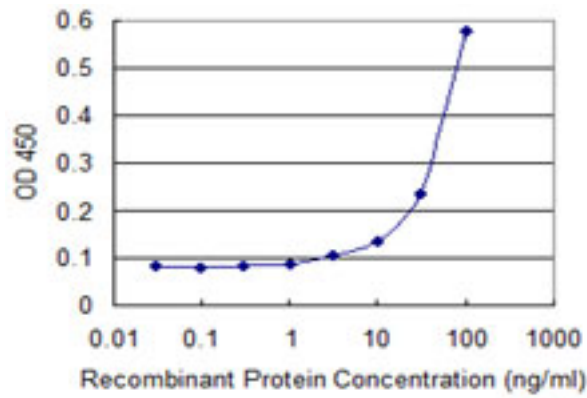
Anti-HER3 antibody IHC of human placenta, trophoblast. Immunohistochemistry of formalin-fixed, paraffin-embedded tissue after heat-induced antigen retrieval. Antibody LS-B6035 concentration 5 ug/ml.

Western Blot Image:



ERBB3 monoclonal antibody, clone 2E9 Western blot of ERBB3 expression in HeLa NE.

ELISA Image:



Detection limit for recombinant GST tagged ERBB3 is 3 ng/ml as a capture antibody.

Requested From:

Japan

Laboratory Reagent For In Vitro Research Use Only

Not for resale without prior written consent from LifeSpan BioSciences, Inc.

Created on 9/24/2014

© 2014 LifeSpan BioSciences