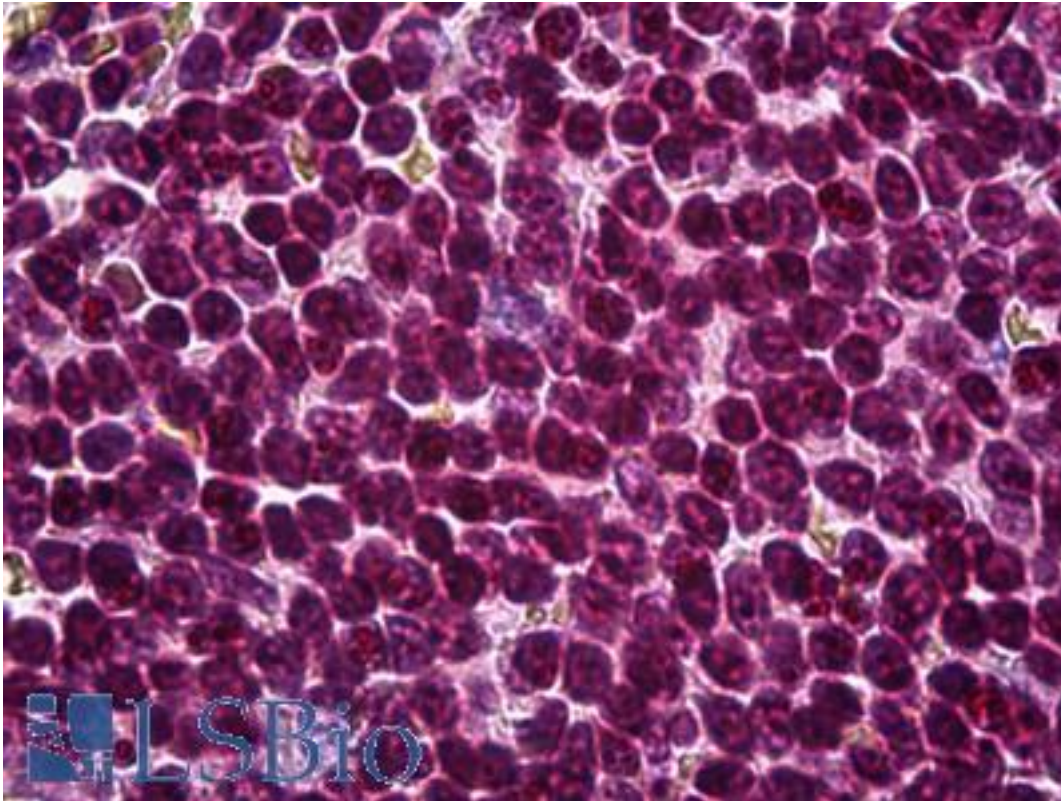


ATF6 Mouse anti-Human Monoclonal (3D5) Antibody - LS-B6032 - LSBio

CatalogID:	LS-B6032
Validation:	This antibody replaces catalog number LS-C134040. It has been validated for use in the following assays: IHC-P.
Target:	activating transcription factor 6 (ATF6)
Synonyms:	ATF6 Antibody, ATF6-alpha Antibody, ATF6A Antibody
Host	ATF6 antibody was produced in Mouse
Clonality:	Monoclonal
Isotype:	IgG2a,k
Clone Name:	3D5
Immunogen Species:	ATF6 antibody was raised against Human
Immunogen:	ATF6 antibody was raised against aTF6 (AAH14969, 91 a.a. ~ 194 a.a) partial recombinant protein with GST tag. MW of the GST tag alone is 26 KDa.
Specificity:	Human ATF6
Reactivity:	Human
Purification:	Protein A purified
Presentation:	PBS, pH 7.2
Recommended Storage:	Short term 4°C, long term aliquot and store at -20°C, avoid freeze thaw cycles.
Usage Summary:	Immunohistochemistry: Formalin-fixed paraffin-embedded sections. Western Blot with the recombinant protein used as the immunogen.
Uses:	IHC - Paraffin (10 µg/ml), Western blot (1:500 - 1:1000), ELISA (Optimal dilution to be determined by the researcher)
Size:	50 µg
Concentration:	0.33 mg/ml

Immunohistochemistry Image:



Anti-ATF6 antibody IHC of human spleen. Immunohistochemistry of formalin-fixed, paraffin-embedded tissue after heat-induced antigen retrieval. Antibody LS-B6032 concentration 10 ug/ml.

Requested From:

Japan

Laboratory Reagent For In Vitro Research Use Only

Not for resale without prior written consent from LifeSpan BioSciences, Inc.

Created on 9/24/2014

© 2014 LifeSpan BioSciences