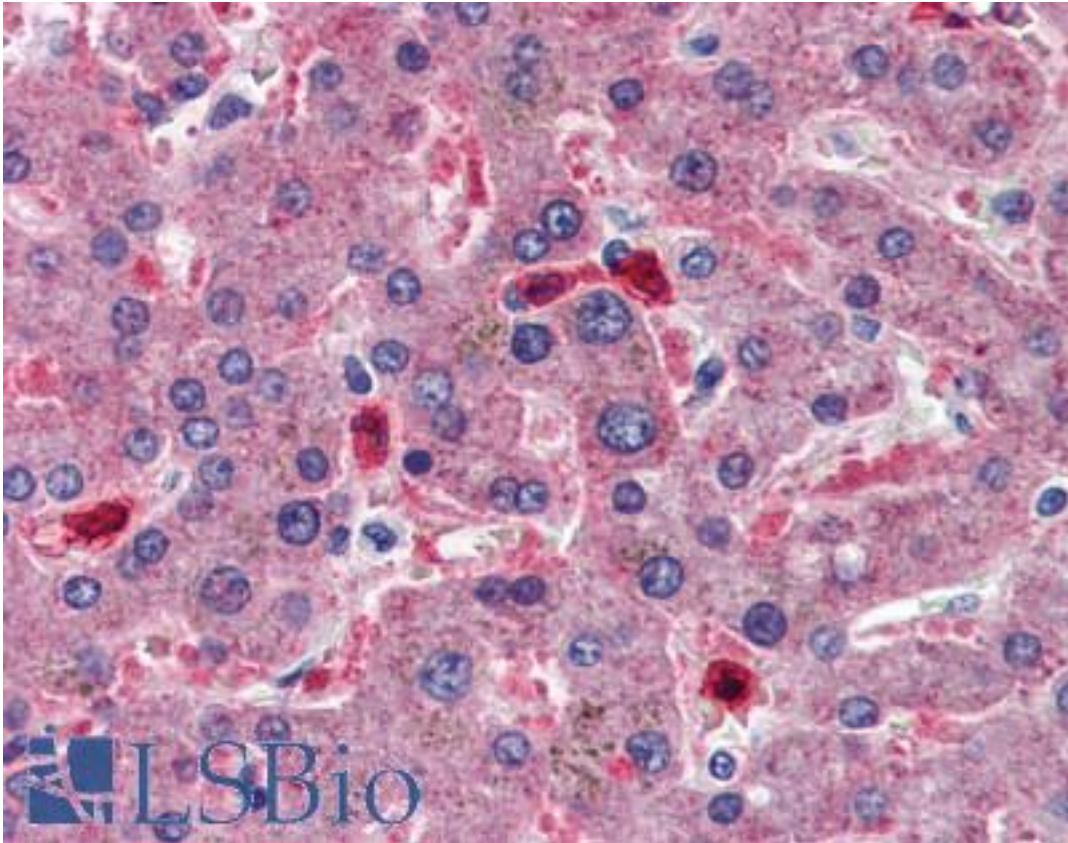


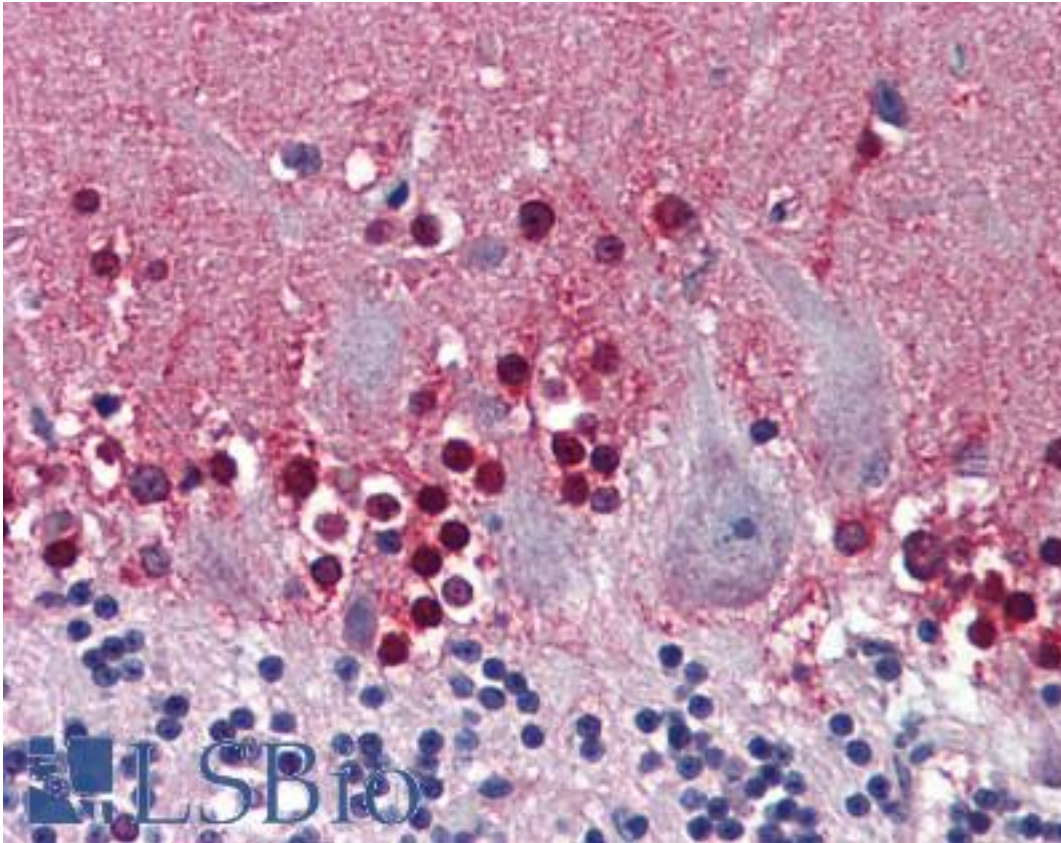
CBS Mouse anti-Human Monoclonal (6A9) Antibody - LS-B6018 - LSBio	
CatalogID:	LS-B6018
Validation:	This antibody replaces catalog number LS-C133017. It has been validated for use in the following assays: IHC-P.
Target:	cystathionine-beta-synthase (CBS)
Synonyms:	CBS Antibody, Beta-thionase Antibody, Cystathionine beta-synthase Antibody, HIP4 Antibody, Methylcysteine synthase Antibody, Serine sulfhydrase Antibody, Cystathionine-beta-synthase Antibody
Host	CBS antibody was produced in Mouse
Clonality:	Monoclonal
Isotype:	IgG1,k
Clone Name:	6A9
Immunogen Species:	CBS antibody was raised against Human
Immunogen:	CBS antibody was raised against cBS (NP_000062, 1 a.a. ~ 101 a.a) partial recombinant protein with GST tag. MW of the GST tag alone is 26 KDa.
Specificity:	Human CBS
Reactivity:	Human
Purification:	Protein A purified
Presentation:	PBS, pH 7.2
Recommended Storage:	Aliquot and store at -20°C or -80°C. Avoid freeze-thaw cycles.
Usage Summary:	Immunohistochemistry: Formalin-fixed paraffin-embedded sections. Sandwich ELISA: Recombinant protein. Western Blot: Recombinant protein.
Uses:	IHC - Paraffin (5 µg/ml), Western blot, ELISA (Optimal dilution to be determined by the researcher)
Size:	50 µg

Immunohistochemistry Image:



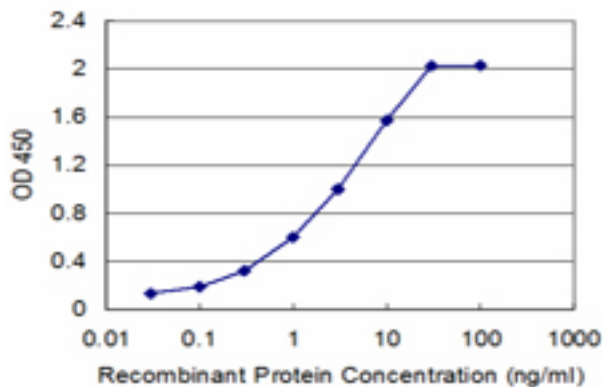
Anti-CBS antibody IHC of human liver. Immunohistochemistry of formalin-fixed, paraffin-embedded tissue after heat-induced antigen retrieval. Antibody LS-B6018 concentration 5 ug/ml.

Immunohistochemistry Image:



Anti-CBS antibody IHC of human brain, cerebellum. Immunohistochemistry of formalin-fixed, paraffin-embedded tissue after heat-induced antigen retrieval. Antibody LS-B6018 concentration 5 ug/ml.

ELISA Image:



Detection limit for recombinant GST tagged CBS is approximately 0.03 ng/ml as a capture antibody.

Requested From:

Japan

Laboratory Reagent For In Vitro Research Use Only

Not for resale without prior written consent from LifeSpan BioSciences, Inc.

Created on 9/24/2014

© 2014 LifeSpan BioSciences