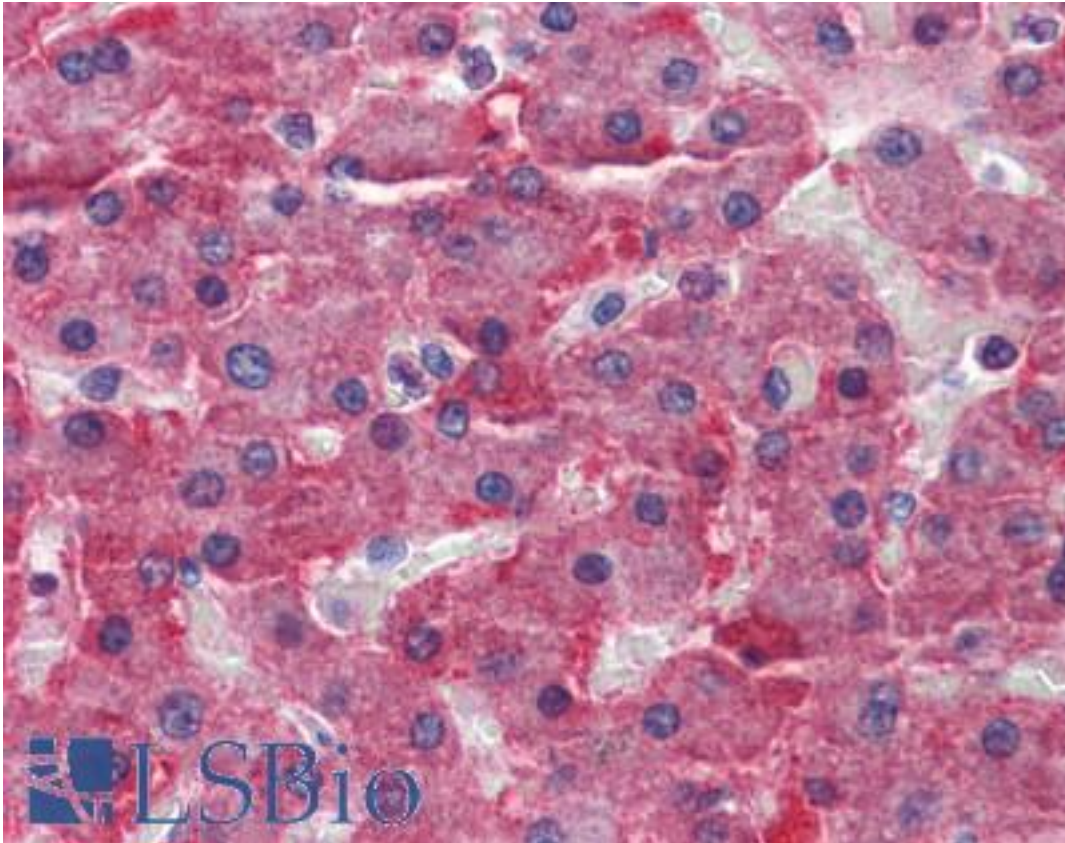


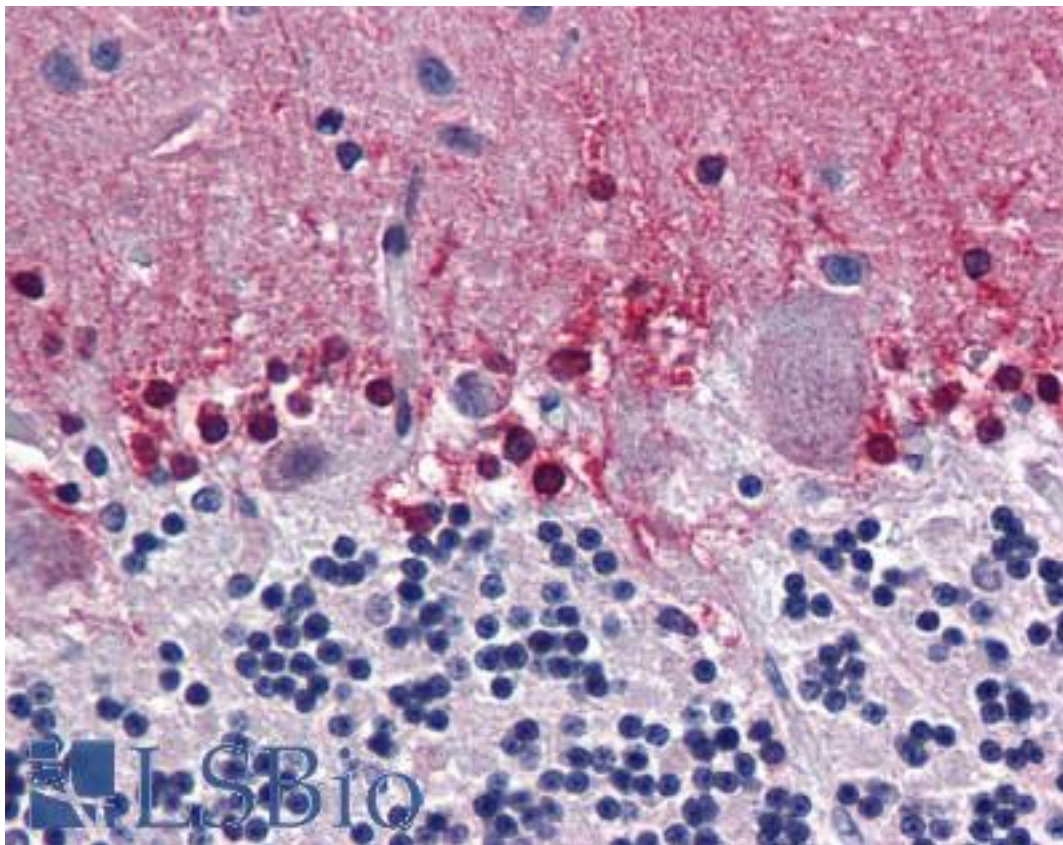
CBS Mouse anti-Human Monoclonal (6B8) Antibody - LS-B6017 - LSBio	
<b>CatalogID:</b>	LS-B6017
<b>Validation:</b>	This antibody replaces catalog number LS-C133016. It has been validated for use in the following assays: IHC-P.
<b>Target:</b>	cystathionine-beta-synthase (CBS)
<b>Synonyms:</b>	CBS Antibody, Beta-thionase Antibody, Cystathionine beta-synthase Antibody, HIP4 Antibody, Methylcysteine synthase Antibody, Serine sulfhydrase Antibody, Cystathionine-beta-synthase Antibody
<b>Host</b>	CBS antibody was produced in Mouse
<b>Clonality:</b>	Monoclonal
<b>Isotype:</b>	IgG2a,k
<b>Clone Name:</b>	6B8
<b>Immunogen Species:</b>	CBS antibody was raised against Human
<b>Immunogen:</b>	CBS antibody was raised against cBS (NP_000062, 1 a.a. ~ 101 a.a) partial recombinant protein with GST tag. MW of the GST tag alone is 26 KDa.
<b>Specificity:</b>	Human CBS
<b>Reactivity:</b>	Human
<b>Purification:</b>	Protein A purified
<b>Presentation:</b>	PBS, pH 7.2
<b>Recommended Storage:</b>	Aliquot and store at -20°C or -80°C. Avoid freeze-thaw cycles.
<b>Usage Summary:</b>	Immunohistochemistry: Formalin-fixed paraffin-embedded sections. Sandwich ELISA: Recombinant protein. Western Blot: Recombinant protein.
<b>Uses:</b>	IHC - Paraffin (5 µg/ml), Western blot, ELISA (Optimal dilution to be determined by the researcher)
<b>Size:</b>	50 µg

**Immunohistochemistry Image:**



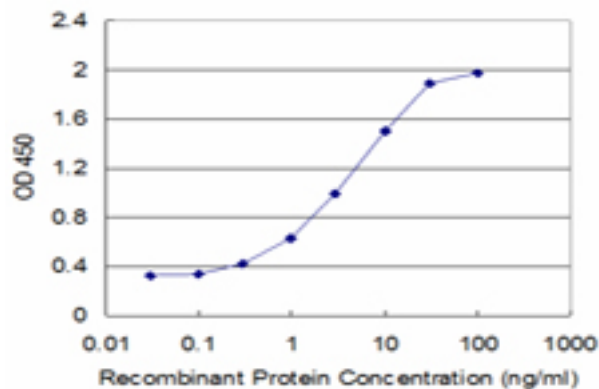
Anti-CBS antibody IHC of human liver. Immunohistochemistry of formalin-fixed, paraffin-embedded tissue after heat-induced antigen retrieval. Antibody LS-B6017 concentration 5 ug/ml.

**Immunohistochemistry Image:**



Anti-CBS antibody IHC of human brain, cerebellum. Immunohistochemistry of formalin-fixed, paraffin-embedded tissue after heat-induced antigen retrieval. Antibody LS-B6017 concentration 5 ug/ml.

**ELISA Image:**



Detection limit for recombinant GST tagged CBS is approximately 0.3 ng/ml as a capture antibody.

Requested From:

Japan

Laboratory Reagent For In Vitro Research Use Only

Not for resale without prior written consent from LifeSpan BioSciences, Inc.

Created on 9/24/2014

© 2014 LifeSpan BioSciences