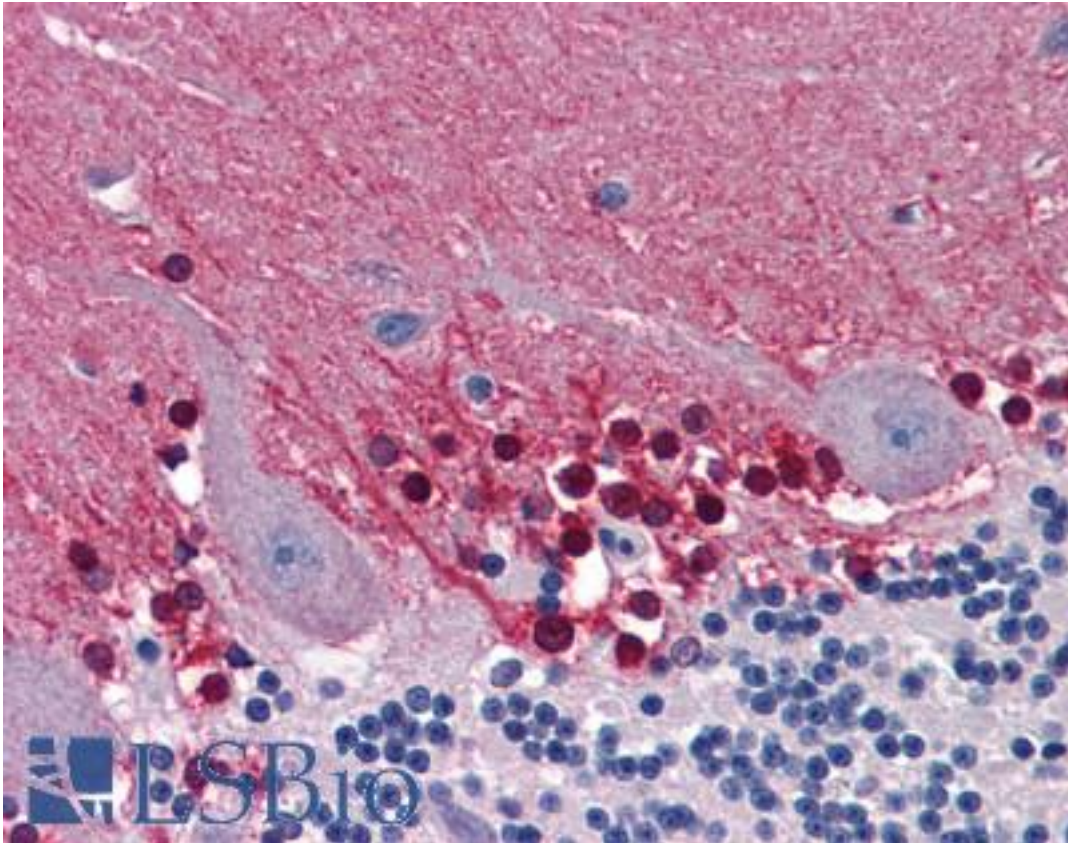


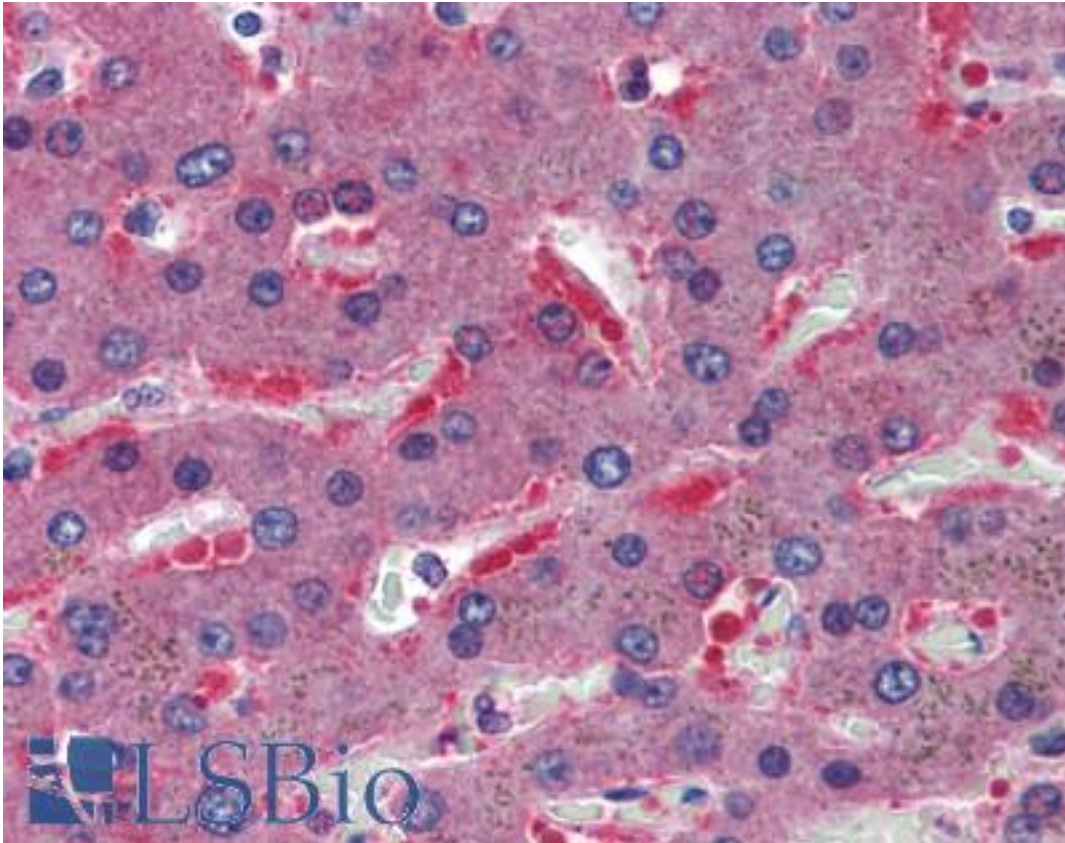
CBS Mouse anti-Human Monoclonal (3E1) Antibody - LS-B6016 - LSBio	
CatalogID:	LS-B6016
Validation:	This antibody replaces catalog number LS-C133015. It has been validated for use in the following assays: IHC-P.
Target:	cystathionine-beta-synthase (CBS)
Synonyms:	CBS Antibody, Beta-thionase Antibody, Cystathionine beta-synthase Antibody, HIP4 Antibody, Methylcysteine synthase Antibody, Serine sulfhydrase Antibody, Cystathionine-beta-synthase Antibody
Host	CBS antibody was produced in Mouse
Clonality:	Monoclonal
Isotype:	IgG2a,k
Clone Name:	3E1
Immunogen Species:	CBS antibody was raised against Human
Immunogen:	CBS antibody was raised against cBS (NP_000062, 1 a.a. ~ 101 a.a) partial recombinant protein with GST tag. MW of the GST tag alone is 26 KDa.
Specificity:	Human CBS
Reactivity:	Human, Rat
Purification:	Protein A purified
Presentation:	PBS, pH 7.4. Sourced in Ascites.
Recommended Storage:	Store at -20°C or lower. Aliquot to avoid repeated freezing and thawing.
Usage Summary:	Immunohistochemistry: Formalin-fixed paraffin-embedded sections. RNAi Knockdown: Antibody validated. Sandwich ELISA: Recombinant protein. Western Blot: Cell lysate, Cell lysate, Transfected lysate, Recombinant protein.
Uses:	IHC - Paraffin (5 µg/ml), Western blot (1:500 - 1:1000), Immunoprecipitation, ELISA (Optimal dilution to be determined by the researcher)
Size:	50 µg
Concentration:	0.42 mg/ml

Immunohistochemistry Image:



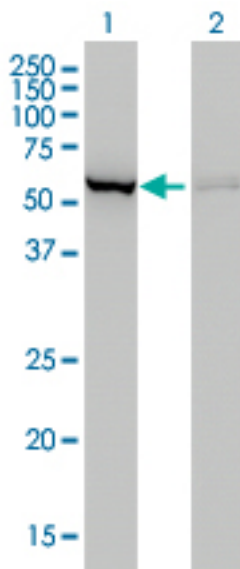
Anti-CBS antibody IHC of human brain, cerebellum. Immunohistochemistry of formalin-fixed, paraffin-embedded tissue after heat-induced antigen retrieval. Antibody LS-B6016 concentration 5 ug/ml.

Immunohistochemistry Image:



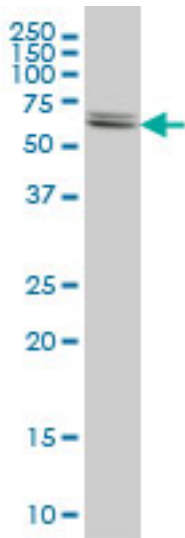
Anti-CBS antibody IHC of human liver. Immunohistochemistry of formalin-fixed, paraffin-embedded tissue after heat-induced antigen retrieval. Antibody LS-B6016 concentration 5 ug/ml.

Western Blot Image:



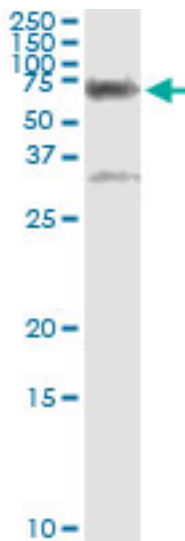
Western blot of CBS expression in transfected 293T cell line. Lane 1: CBS transfected lysate (61 kDa). Lane 2: Non-transfected lysate.

Western Blot Image:



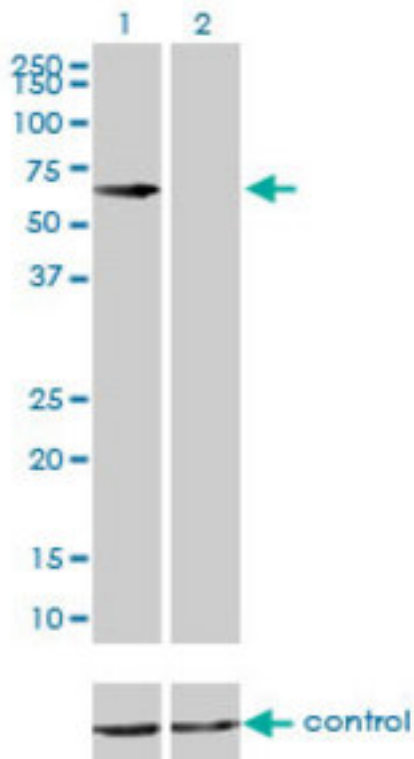
Western blot of CBS expression in HeLa cell lysate.

Immunoprecipitation Image:



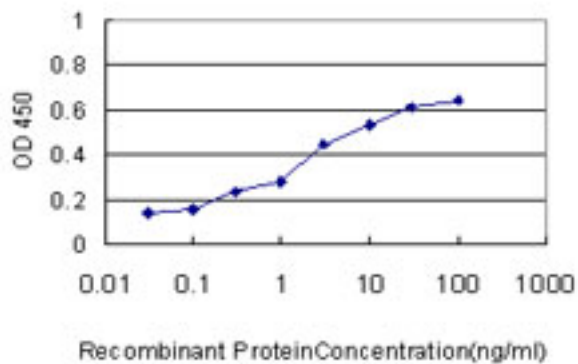
Immunoprecipitation of CBS transfected lysate using anti-CBS monoclonal antibody and Protein A Magnetic Bead.

RNA interference Image:



Western blot of CBS over-expressed 293 cell line, cotransfected with CBS Validated Chimera RNAi (Lane 2) or non-transfected control (Lane 1). Blot probed with CBS antibody, clone 3E1. GAPDH (36.1 kD) used as specificity and loading control.

ELISA Image:



Detection limit for recombinant GST tagged CBS is approximately 0.1 ng/ml as a capture antibody.

Requested From:

Japan

Laboratory Reagent For In Vitro Research Use Only

Not for resale without prior written consent from LifeSpan BioSciences, Inc.

Created on 9/24/2014

© 2014 LifeSpan BioSciences