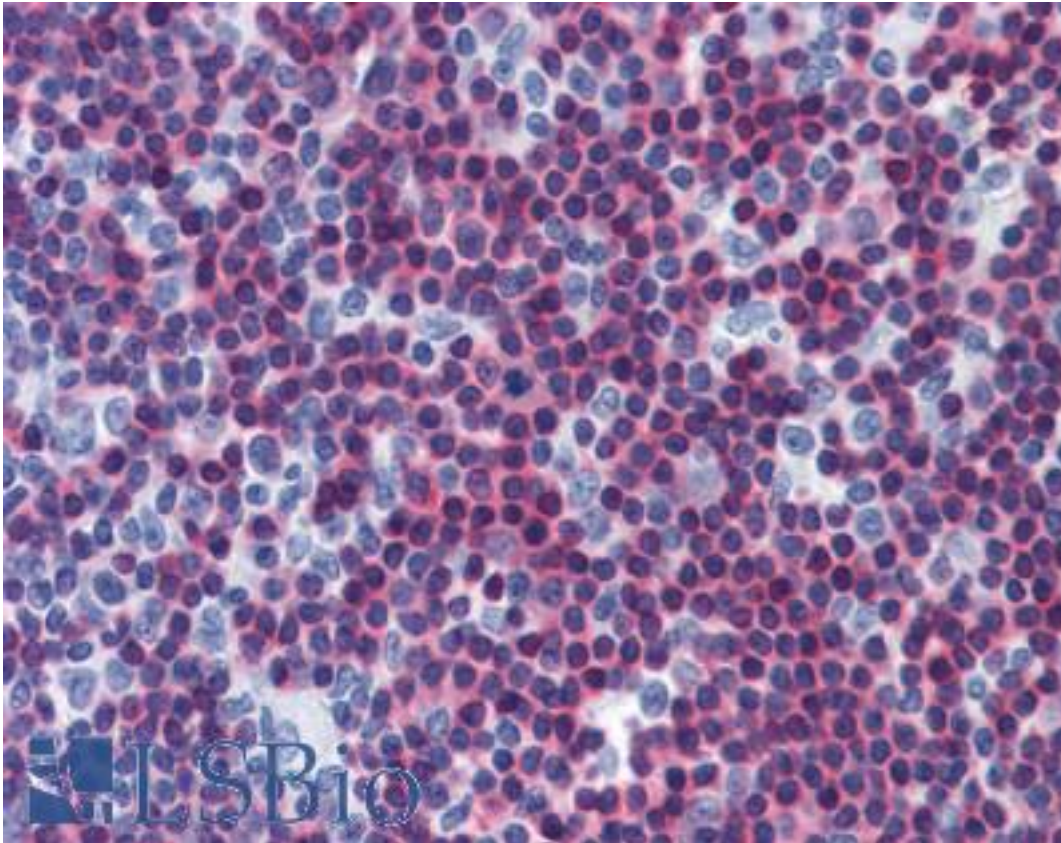


CAMK4 Mouse anti-Human Monoclonal (1A3) Antibody - LS-B6013 - LSBio

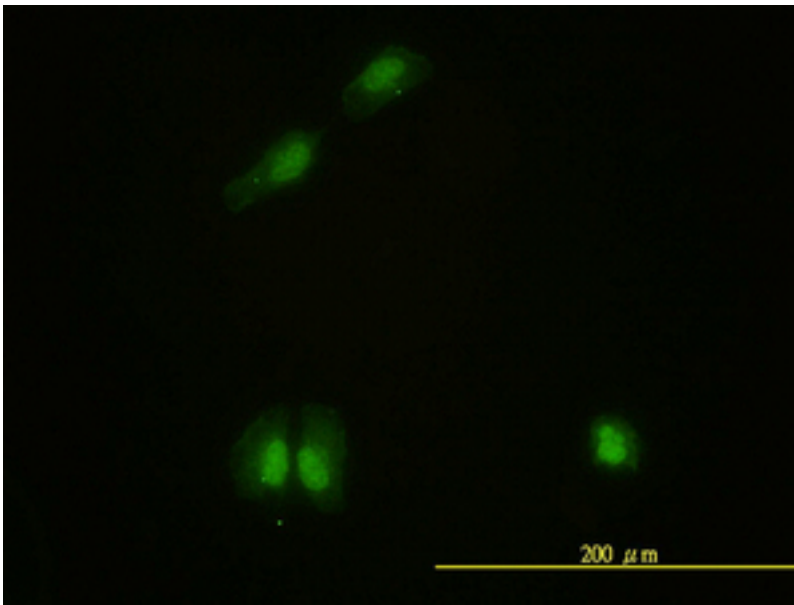
CatalogID:	LS-B6013
Validation:	This antibody replaces catalog number LS-C133006. It has been validated for use in the following assays: IHC-P.
Target:	calcium/calmodulin-dependent protein kinase IV (CAMK4)
Synonyms:	CAMK4 Antibody, CAM kinase IV Antibody, CaMK IV Antibody, CaMK-GR Antibody, CAMKIV Antibody, CaMK Antibody, CAM kinase- GR Antibody, CaM kinase-GR Antibody, CaM-KIV Antibody
Family / Subfamily:	Protein Kinase / CAMK1
Host	CAMK4 antibody was produced in Mouse
Clonality:	Monoclonal
Isotype:	IgG1,k
Clone Name:	1A3
Immunogen Species:	CAMK4 antibody was raised against Human
Immunogen:	CAMK4 antibody was raised against cAMK4 (AAH25687, 1 a.a. ~ 474 a.a) full length recombinant protein with GST tag. MW of the GST tag alone is 26 KDa.
Specificity:	Human CAMK4
Reactivity:	Human
Purification:	Protein A purified
Presentation:	PBS, pH 7.2. Sourced in Ascites.
Recommended Storage:	Aliquot and store at -20°C or -80°C. Avoid freeze-thaw cycles.
Usage Summary:	Immunohistochemistry: Formalin-fixed paraffin-embedded sections. RNAi Knockdown: Antibody validated. Sandwich ELISA: Recombinant protein. Western Blot: Cell lysate, Transfected lysate, Recombinant protein.
Uses:	IHC - Paraffin (5 µg/ml), Immunofluorescence (10 µg/ml), Western blot (1:500 - 1:1000), ELISA (Optimal dilution to be determined by the researcher)
Size:	50 µg
Concentration:	0.41 mg/ml

Immunohistochemistry Image:



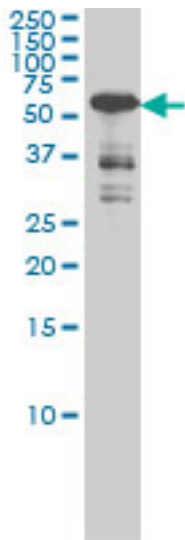
Anti-CAMK4 antibody IHC of human tonsil. Immunohistochemistry of formalin-fixed, paraffin-embedded tissue after heat-induced antigen retrieval. Antibody LS-B6013 concentration 5 ug/ml.

Immunofluorescence Image:



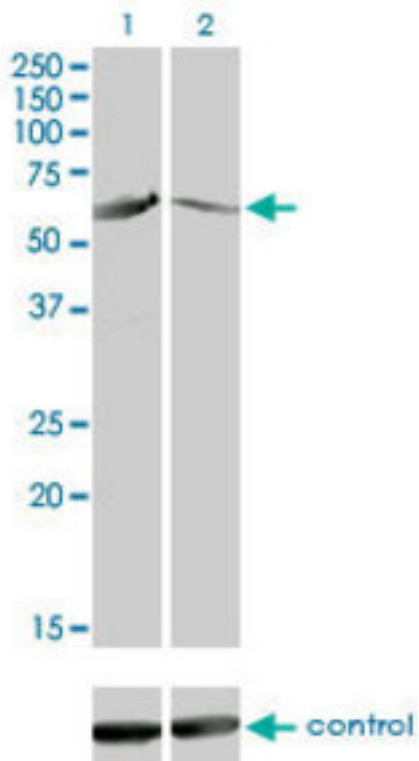
Immunofluorescence of monoclonal antibody to CAMK4 on HeLa cell. [antibody concentration 10 ug/ml]

Western Blot Image:



Western blot of CAMK4 expression in Jurkat cell lysate.

RNA interference Image:



Western blot of CAMK4 over-expressed 293 cell line, cotransfected with CAMK4 Validated Chimera RNAi (Lane 2) or non-transfected control (Lane 1). Blot probed with CAMK4 antibody. GAPDH (36.1 kD) used as specificity and loading control.

Requested From:

Japan

Laboratory Reagent For In Vitro Research Use Only

Not for resale without prior written consent from LifeSpan BioSciences, Inc.

Created on 9/24/2014

© 2014 LifeSpan BioSciences